



**HURRY, HURRY, HURRY**, before they're all gone. Even though these toddlers could hardly see with their winter caps pulled over their eyes or hardly walk with 30 pounds of winter

clothing on, helpful sisters and parents guided the first-time egg hunters to the oval treasures on the Athletic Field Saturday morning.

**ANY MORE EGGS?** Mr. Bunny reaches into his bottomless egg basket for more eggs to give to children who somehow missed finding any. More than 100 dozen eggs were colored by Jaycee members for the annual hunt with 10 marked with a smiley face

as winners. The boys in the left foreground seems more curious about the camera than Peter Cottontail but later was seen snuggling up close to the rabbit in search of an egg.

#### WEATHER

	Min.	Max.	Precip.
Thursday, March 23	32	47	0.08
Friday, March 24	33	48	0.00
Saturday, March 25	36	51	0.00
Sunday, March 26	29	33	0.19
Monday, March 27	32	35	0.13
Tuesday, March 28	33	35	0.09
Wednesday, March 29	33	38	0.00

# The Chelsea Standard

#### QUOTE

"No race can prosper until it learns that there is as much dignity in tilling a field as in writing a poem."

—Booker T. Washington.

ONE HUNDRED-EIGHTH YEAR—No. 42

12 Pages This Week

Plus 4-Page Supplement

CHELSEA, MICHIGAN, THURSDAY, MARCH 30, 1978

15c per copy

SUBSCRIPTION: \$6.00 PER YEAR

## United Way Distributes Agency Funds

Chelsea United Way has announced that it will distribute \$36,509, collected during its 1977 drive, to 43 Chelsea social service agencies.

"This is the greatest distribution of charitable funds in the history of Chelsea United Way," according to president Gerald Dresselhouse.

"Thanks to this fine response from Chelsea families and organizations in 1977, we have fulfilled the asking of nearly all of our United Way agencies. Once again our major support goes to Chelsea Recreation Council and again the leading beneficiaries of Chelsea United Way program are our children," Dresselhouse said.

At its spring meeting the budget committee of Chelsea United Way allocated the funds as follows: Chelsea Recreation Council, \$7,600; Cystic Fibrosis Foundation, \$1,000; Huron Valley Child Guidance, \$600; Boy Scouts, \$4,200;

Child and Family Services, \$770; Huron Valley Girl Scouts, \$3,200; Chelsea Bands, \$400; Home Meal Service, \$700; Red Cross, \$3,904; Chelsea Social Services, \$4,500; Washtenaw Association for Retarded Citizens, \$1,200; Salvation Army, \$2,000; Catholic Social Services, \$1,500; United Way of Michigan, \$4,935.

General fund chairman Will Connolly explained that campaign expenses amounted to \$1,100 during the fall of 1977, or less than three percent of the funds raised. He said that the Chelsea United Way has no paid employees and all of its efforts in raising and distributing money are carried out by volunteers.

1978 distribution of the total \$37,609 is as follows: Children, \$17,000 (45.2 percent); Adults and families, \$14,574 (38.8 percent); United Way of Michigan, \$4,935 (13.1 percent); Campaign materials, \$1,100 (2.9 percent).

## W. Coelius Resigns As Debate Coach

William Coelius, Chelsea High school speech teacher, and debate coach and forensics coach announced that he has retired from his job as debate coach.

"Being associated with the debate team has meant a lot to me and I give up coaching reluctantly," Coelius said. "After working with the students they almost became family to me, and I'll miss the excitement," he added. Coelius came to the Chelsea school system in 1967 as a speech teacher and in short time initiated Chelsea High school's first debate

team. In addition to teaching speech and coaching debate, Coelius also became the forensics coach in 1967.

Looking back to those first years of the debate team, Coelius remembers that "in 1967 we began the team with only four students. Since then it has grown so much that we offered a debate class in 1971 and this past 1977-78 season had more than 25 students competing with class 'A' schools at the local and state level."

The long season for debate, however, (Continued on page three)

## Chelsea Police Nab Three Cassidy Lake Walkouts

Chelsea police officer Lenard Dougall nabbed two out of three kids from the Cassidy Lake Middle School at 11:15 p.m. Sunday, while Washtenaw County deputies with the help of officers from Chelsea and Manchester nabbed the third man Wednesday at 10:50 a.m., according to police reports.

The Chelsea Police Department reported receiving a notice from the Cassidy Lake school at 11:15 a.m. Tuesday that Franklin Watson, Brian Kish, and David Clark were missing from the grounds. Officer McDougall and dispatcher Todd Hendrick were heading south on Main St. during their (Continued on page five)



**WCC HONORS CAMERON:** In honor of Charles Cameron's completing 26 years as superintendent of the Chelsea school district and his assistance to the college, members of the Washtenaw Community College Board of Trustees presented Cameron with a plaque and a resolution citing his services to the Chelsea schools. Presenting the plaque from left to right are: WCC president Gunder A. Myran; WCC board chairman Anthony J. Proccassini; superintendent Charles S. Cameron; and, seated, board member Ann C.

Kettles. In the resolution Cameron was cited for "... working diligently for the principle of education for all, and promoted the concept of a community college for Washtenaw county, and ... assisted WCC in establishing in Chelsea in 1969 the first off-campus college course offerings, and ... in co-operation with the Chelsea schools, WCC has continued to grow and expand its offerings to more than 1,200 enrollments of Chelsea area citizens over the last decade ..."

## Student Council Collects \$20 for MD Campaign

The total figure isn't in yet, but the guess is that approximately \$20 was collected during last weekend's Muscular Dystrophy drive sponsored by the Chelsea High school student council.

"We basically did not do too well," student council advisor Andrew Hurst said. "There was another drive going on the same week-end which probably cut into ours. Next year we will find another way to spend our time raising money," Hurst added.

What money was collected will be sent to the main Muscular Dystrophy office in Lansing.

**Randy Johnson Quits As Basketball Coach At Beach School**

Beach Middle school basketball coach Randy Johnson announced that he will not continue as coach next season. "I plan to pursue outside interests and spend more time with my family," Johnson explained.

## Hundreds of Children Scoop Up Easter Egg Hunt Hidden Bounty

Bundled in soon to be packed winter paraphernalia, mid-20 degree temperatures became only a minor inconvenience for the hundreds of Chelsea children as they gathered for the annual Jaycee Easter Egg hunt Saturday morning.

Even Peter Cottontail was undaunted by whipping winds, nipping cold, and a slight sprinkling of freezing rain as he tweaked the bright red noses of excited children waiting eagerly to storm the egg laden Chelsea High school athletic field.

A few first-time egg hunters were seen holding out their empty baskets to Mr. Bunny, who arrived promptly at 11 a.m. in hopes of getting a head start in the race. Mr. Bunny, however, had an empty basket himself having already hidden 100 dozen decorated eggs in the field.

While children were being assembled into appropriate age groups, parents made a noble effort to keep the weather out of conversations and sibling squalls at an ebb; "no Johnnie your sister is joining her own group, you

come over here at this gate." With numerous queries of "is it time yet, is it time yet, hunt officials gave the "ready, set, go" command and in seconds hundreds of eggstastic children besieged the field.

In the pre-school section, parents were heard saying, "over here

Janet, don't throw the eggs, put them in your basket." In the older sections no directions were needed as shouts of "let's get 'em" were heard everywhere.

In what seemed like less than a minute, the field lay bare of anything even resembling an egg and (Continued on page three)

## Third Candidate Files For School Board Post

Daniel T. Snyder, 1325 N. Freer Rd., announced Tuesday that he has filed his petition to run in the Chelsea school board election. He joins Dale Schumann and Arthur E. Dils, Jr., who have already filed petitions.

Petitions are available in the superintendent's office at Chelsea High school and must be filed by April 10. Any qualified voter in the school district is eligible to run and must obtain the signatures of at least 20 electors.

To qualify as a school elector one must be 18 years old, a U.S. citizen, a resident of the school district, and a registered voter of the school district.

Signatures on a petition must all be from the same township, and petition circulators must be registered electors of the Chelsea School District. A petition signer may not sign for more than two nominees for the four-year term positions of school board members.

## Jackson Man Named New School Supt.

The Chelsea School District Board of Education, at a special meeting Wednesday evening, approved a two-year contract with Raymond E. Van Meer as Superintendent of Schools effective July 1.

In making the announcement, Board President Robert Daniels stated that "we began with well over 100 applicants, and the selection process was arduous, but I must say the Board of Education is extremely pleased to have a person of Mr. Van Meer's caliber and wide range of experience coming to Chelsea."

The board agreed to give Van Meer a salary of \$33,000 for the first year with the second year salary to be determined on a performance appraisal based upon the goals and objectives as set by the Board of Education and Van Meer. The board also agreed to pay for his moving expenses, not to exceed \$1,000.

Van Meer has held a number of administrative positions in the Jackson Public School system where he is currently Assistant Superintendent. Prior to this he was Principal at Griswold Elementary school in Jackson from 1972 to 1975, and Assistant Principal at Parkside High school in Jackson from 1967 to 1972.

From 1963 to 1967 Van Meer was a teacher and athletic coach at Parkside High school in Jackson, and from 1961 to 1963 was a teacher and athletic coach for Jackson High school. He also taught and coached from 1956 to 1961 at Eaton Rapids Public schools, and from 1952 to 1956 at Essex Public schools in Essex, Ia.

Van Meer served two years in the United States Navy where he served aboard the U.S.S. Tanner. In addition to his teaching, coaching, and administrative career, Van Meer has been active in the community. He served on the Board of Directors of Methodist churches of Eaton Rapids and Jackson; was president of Eaton Rapids Junior Chamber of Commerce; co-directed the 1969 drug abuse program, and was president of Cascades Exchange Club in Jackson.

His distinguished service honors include: Jackson Area Coach of the Year - 1966; Detroit Free Press All-State Board Member, 1966, 1968; and was awarded an NDEA grant to the University of California at Berkeley to study the teaching of American History.

Van Meer was a participant as a North Central evaluation team member and also in the National



RAYMOND E. VAN MEER

Public Relations seminar. Currently he is participating in executive workshops with Jackson area business, industrial, and educational leaders.

He was born Jan. 3, 1929 in Buffalo, N.Y., and is a graduate of LaSalle High school in Niagara Falls, N.Y. He received his Bachelor of Science degree from Simpson College, Indianola, Ia., in 1952 with majors in history and physical education and minors in English and science. He received his Master of Arts degree from Michigan State University in 1953 with a major in educational administration and a minor in sociology. He has completed 30 semester credits beyond the M.A. program in educational administration from Michigan State University and the University of California.

Van Meer is married with three children and is a member of the First Methodist church of Jackson.

## K. R. Gets His First Hole-in-One On Florida Course

K. R. McMannis, 309 W. Middle St., shot his first hole-in-one Feb. 2 at the Yacht Club Estates golf course while vacationing in Seminole, Fla.



Established 1871 **The Chelsea Standard** Telephone 476-1871

Excellence Award By Michigan Press Association  
1951-1952, 1960-1964, 1965-1968  
Walter P. Leonard, Editor and Publisher

Published every Thursday morning at 300 North Main Street, Chelsea, Mich. 48118, and second class postage paid at Chelsea, Mich., under the Act of March 3, 1879.

Subscription Rates (Payable in Advance)  
In Michigan: One Year \$36.00, Six Months \$20.00, Single Copies \$ .20  
Outside Michigan: One Year \$38.50, Six Months \$22.50, Single Copies \$ .25

MEMBER **NATIONAL NEWSPAPER ASSOCIATION** - Founded 1888

National Advertising Representative: **MICHIGAN NEWSPAPERS, INC.**  
257 Michigan Ave.  
East Lansing, Mich. 48823

## Uncle Lew from Lima Says:

DEAR MISTER EDITOR:

Wouldn't it be someone up here who was to break out all over the world. Would folks really get bored with good news, if just for a day? We pray for peace all the time, but we put a special hope in Easter. Every year is like this past Sunday. The "Christian world pauses," the papers say, to honor the Prince of Peace.

It just so happened late last week, Mister Editor, that my old lady was going through some boxes in the attic like she does when she starts trying to rush spring cleaning, and she threw out some newspapers she had some jelly jars in that she ferreted what she saved fer. She tossed the papers on the back porch, and I was halfway through one of em afore I noticed it was from 1959. The news was the same it is in 1978.

Trouble all over the world, prices up, income down, the population exploding and the dollar shrinking. "Emerging" nations fighting brushfire wars, Congress dreaming up new giveaway schemes, and the military working on new ways to blow everything up.

I know you notice these things, but I'm reminded that politicians can do a heap of twisting with a good dictionary. Back then we had warnings of slumps, but no busts, deflation had been replaced by disinflation and a downward trend was being called a healthy regrouping of resources. It all sounds like the general calling his retreat a strategic withdrawal, but the fact was and is that most of us still is getting disengaged from our money to keep up the Governments, and if this is a healthy regrouping of resources I'm still hoping for the worst. We natural think the worst and say the best, Mister Editor, like the other day I heard a undertaker call cemetery lots pre-need merchandise.

**Howell Livestock Auction**  
Starts 1 p.m. Every Monday  
Mason 676-5400

The Wise Owl Says Ship to Howell  
Phone 546-2470 **Jim Franklin**  
Market Report for Mar. 27

**CATTLE**—  
Bulk Cattle Choice Steers, \$50 to \$53.  
Fry High Choice Steers, \$53 to \$53.50.  
Gd. Choice Heifers, \$48 to \$50.  
Fed Holstein Steers, \$40 to \$47.  
Ut. Steer, \$40 and down.

**COWS**—  
Helfer Cows, \$36 to \$38.50.  
Ut. Commercial, \$35 to \$38.50.  
Canner-Cutter, \$30 to \$35.  
Fat Beef Cows, \$32 to \$36.

**BULLS**—  
Heavy Bologna, \$40 to \$47.75.  
Light and Common, \$40 and down.

**FEEDERS**—  
400-600 lb. Good-Choice Steers, \$52 to \$57.  
600-800 lb. Good-Choice Steers, \$47 to \$52.  
300-600 lb. Good-Choice Heifers, \$40 to \$46.  
300-500 lb. Holstein Steers, \$40 to \$46.  
500-800 lb. Holstein Steers, \$38 to \$43.  
Common and Medium, \$35 and down.

**CALVES**—  
Prime, \$70 to \$78.  
Good-Choice, \$60 to \$70.  
Heavy Deacons, \$40 to \$60.  
Cull & Med., \$20 to \$35.  
Calves going back to farms sold up to \$50.

**SHEEP**—  
Woolled Slaughter Lambs, Spring:  
Choice-Prime, \$70 to \$72.  
Good-Utility, \$66 to \$70.  
Slaughter Ewes, \$18 to \$24.  
Feeder Lambs, All Weights, \$67 to \$70.

**HOGS**—  
210 to 230 lbs., No. 1, \$48 to \$48.85.  
200-250 lbs., No. 2, \$47 to \$48.  
Heavy Hogs, 250 lbs. up, \$40 to \$42.  
Light Hogs, 200 lbs. down, \$35 to \$45.

**Sows**:  
Fancy Light, \$39 to \$40.  
300-350 lbs., \$40 to \$41.50.  
500 lbs. and up, \$41.50 to \$42.50.

**Boars and Stags**:  
All Weights, \$30 to \$37.

**Feeder Pigs**:  
Per Head, \$20 to \$55.  
Est. 40 lb. pigs, \$35 to \$42.

**HAY**—  
1st Cutting, per bale, \$1.40 to \$2.00.  
2nd Cutting, per bale, \$1.80 to \$2.55.

**STRAW**—  
Per Bale, \$1.60 to \$1.85.

**COWS**—  
Tested Dairy Cows, \$390 to \$600.  
Tested Beef Type Cows, \$200 to \$400.

**"The new tax forms."**

**A good reason to let us help with your taxes."**

At H&R Block, we understand these new forms, we know the laws. We'll do everything we can to save you money. And that's Reason No. 1 why you should let H&R Block do your taxes.

**H&R BLOCK**  
THE INCOME TAX PEOPLE

105 S. MAIN ST., CHELSEA Ph. 475-2752  
Our offices are open 9 a.m. to 6 p.m.

**MICHIGAN MIRROR**  
By Warren M. Hoyt, Secretary, Michigan Press Association

**Energy from Solid Waste**  
Three Michigan communities will begin experimental programs this month to turn waste back into usable materials or energy. Federal grants of \$14,300 each have been awarded to Grand Traverse and Kent counties and to the city of Kalamazoo as part of the state's energy conservation program.

Grand Traverse county will study whether the Traverse City Light and Power Department could burn wood waste and refuse-derived fuel in a new electrical power plant. The grant will be used for a consulting engineering firm to investigate fuel and material markets, boiler plants and resource recovery plants and cost-benefit ratios.

Recycle Unlimited of Grand Rapids, a community organization, will test the feasibility of using a resource recovering trailer in parts of Kent county.

The trailer will follow garbage trucks making curbside pickups and will process household waste into products such as color-sorted glass particles, newspapers and magazine and flattened tin, aluminum and other metal cans.

In Kalamazoo, the city will test the effectiveness of various public information techniques to increase participation in a planned city-wide curbside newspaper recycling project.

According to the State Energy Commission, within the Department of Commerce, results of the six-month studies are expected to be applicable elsewhere in Michigan. A new series of grants will be available in late March for other Michigan cities, townships and counties.

**Youth Services Agency**  
The House of Representatives

## JUST REMINISCING

Items taken from the files of The Chelsea Standard

### 4 Years Ago...

Thursday, April 4, 1974—

Chelsea's 1974 track season opened last Friday with little pre-season fanfare but a commendable performance in the 20th annual Huron Relays at Eastern Michigan's Bowen Field House.

Chelsea 4-H clubs romped with a veritable rainbow of ribbons earned in last week-end's 4-H Spring Achievement county-wide theme of which was "Fashions, 4-H Style. Ranked among the top 10 models in the junior miss category was Shelley Warren, a member of Freer Acres 4-H Club. Among the girls who were chosen as the top 30 models from local 4-H groups were Mary Lynn Noah, Alicia Noah, and Sandy Shadon from Scissorettes; Holly Hoffmeyer from Freer Acres 4-H Club, and Elizabeth Bush and Beth Heller from Terrific Tailors.

Scott Alder was named junior grand champion and a number of other area riders earned ribbons and awards in the third and final inter-schooling show of the season, held at Stoney Ridge farm on Sunday, March 17. Individual results for grand champion Alder, riding Bacardi, included four first places in advanced horsemanship II, junior working hunter, junior hunter under saddle, and bareback horsemanship, over fences; a second in bareback horsemanship on the flat; and a fifth in junior jumper.

Kim Miles, whose name appeared in the Sunday Detroit News, is a winner in the 1974 Scholastic Writing Awards, sponsored by the Detroit News. More than 6,000 entries were submitted in the awards competition. Her entry consisted of a group of four poems, which has been forwarded to New York to be entered in the National Scholastic Writing Awards competition.

### 14 Years Ago...

Thursday, April 2, 1964—

Chelsea High school seniors are due to return from their class trip at about noon tomorrow. The students left Chelsea shortly after noon on Monday, going first to Toledo, O., where they boarded a train for New York City and four days of sightseeing and entertainment.

Two Chelsea families with sons in Anchorage, Alaska, have been assured that their sons were unharmed during the violent earthquake which struck there Friday night. The families are Mr. and Mrs. Harold L. Curtis of Lingane Rd., and Mr. and Mrs. Oliver Shepherd also of Chelsea.

**FARM INCOME TAX**  
Since 1953

**Chelsea Bookkeeping & Tax Service**  
202 First National Building  
Ann Arbor, Mich. 48104  
769-0924

tile and spend more time with my family."

Indications Monday and Tuesday seemed to be that March, in addition to coming in "like a lion" was also going out the same way, disproving the old belief "in like a lion, out like a lamb." Approximately six inches of snow covered the ground when it stopped snowing late Monday evening.

Another "mystery project" is believed to be the underlying reason for attempts to buy large areas of land in the vicinity of the intersection of Pleasant Lake Rd. and Chelsea-Manchester Rd. during recent weeks. The method of approaching land owners in the area has all the earmarks of the three-year "mystery of mysteries" which culminated in the disclosure of plans for the 3,500-acre Chrysler Proving Ground.

### 34 Years Ago...

Thursday, March 30, 1944—

As a result of a transaction which is being consummated this (Continued on page five)

recently approved legislation for improved services to delinquent, abused and neglected young people through a stronger state agency.

The legislation would create a new Office of Children and Youth Services to consolidate various service programs now scattered throughout the department.

All youth services in the department, except daycare, child care facility licensing and the Youth Parole Review Board, will be consolidated in the new agency. It would develop, promote and evaluate youth services, including foster care.

The office is authorized to spend up to 20 percent of the child care fund to provide for early treatment of problems of delinquency and neglect and to expedite the child's return to the home.

The agency is expected to cost about \$400,000 the first year.

**Protection Against Bad Autos**  
Consumers may be getting closer to a solution as to what they can do in case their pride of ownership of a new car becomes one of disgust when they find that auto is a lemon.

After many years of failure, both houses of the legislature have approved a bill eliminating the holder-in-due-course doctrine for auto installment sales contracts.

The statute would allow auto owners to withhold payments on autos they believe to be defective, at least until some agreement can be reached between the owner and the seller.

However, the Senate tacked on amendments requiring that payments due must be paid to an escrow account until the case is decided. Also, another amendment eliminates the right after 24 months.

The bill's sponsor Rep. Perry Bullard (D-Ann Arbor) is not happy with the Senate amendments and has headed the measure to a conference committee to work out differences.

He challenged the Senate amendments saying they eliminate some of the consumer rights for which the bill was originally proposed. Bullard said consumers should not have to continue making the

## Dial-A-Garden Topics Listed

Dial-A-Garden, the system of pre-recorded daily gardening tips is sponsored by the Washtenaw County Co-operative Extension Service. The system is in operation 24 hours per day, seven days per week. Interested persons are invited to call 971-1122 at their convenience and receive timely, up-to-date gardening information.

Next week's Dial-A-Garden topics are:

Friday, March 31—"Time To Start Tomato Transplants."  
Monday, April 3—"Early Crabgrass Control."  
Tuesday, April 4—"Soil Preparation for Early Crops."  
Wednesday, April 5—"Spring Strawberry Care."  
Thursday, April 6—"Dividing Perennials in Spring."

## Pinckney Man Cited Thursday On DUIL Charge


Deputies arrested a 39-year-old Pinckney man for driving under the influence of liquor after an accident in which he demolished a number of newspaper boxes along Dexter-Pinckney Rd. early Thursday, March 23, it was reported by the Washtenaw County Sheriff's Department.

According to the report, James Gerald Campbell, 363 W. Main St., Pinckney, was northbound on Dexter-Pinckney Rd. two miles north of Fleming Rd. at 2:30 a.m. and traveling at a high rate of speed when, attempting to avoid the scene of an accident on the west side of the road, he braked, lost control of his vehicle, and left the roadway. There, he struck a number of tree branches, it was reported, and plowed into a row of newspaper boxes lined up along the shoulder, dragging them 200 feet before coming to a stop.

No injury was reported, although deputies said Campbell's car was removed by a wrecker belonging to the Dexter Body Shop.

payments to an escrow account as they need the money for other transportation during the period. He also said the two-year cut-off is not right as current auto financing often goes 36 months and sometimes 48 months.

Tonight and Every Thursday  
**THE CAPTAINS TABLE**  
**ROAST BEEF BUFFET**



"Carved Before Your Eyes"  
Serving from 4:30-9:30 p.m.

**The Captains Table - 8093 Main St., Dexter**

**ERIN'S ROTOTILLERS**  
**1977½ SALE ON LEFTOVERS**  
2 H.P. - 7 H.P.  
from  
**\$139 - \$799**  
**BOULLION**  
**SALES & SERVICE**  
8510 North Territorial Rd., Dexter  
Phone 426-8527 or 426-8493

Advertise Your Auction in The Standard

**7.75% PER ANNUM**

**available to everybody**

You can get a regular Passbook Certificate at Ann Arbor Federal Savings that pays you 7% interest annually. You can also get an IRA or KEOGH Retirement Passbook Certificate that pays you 7% interest annually.

So?

So it pays you to have all of your accounts at Ann Arbor Federal Savings where all of your money can earn the top rate allowed by law and where you can maintain tighter control over your savings program. May we also point out that with monthly compounding your money earns an effective annual rate of 8.03% and your savings are insured to \$40,000 with an agency of the federal government.

\*Federal regulations require a substantial penalty for early withdrawals from certificate accounts.

**7 3/4% PASSBOOK CERTIFICATE ACCOUNT**  
Term 72 Months  
Minimum deposit \$1000

**7 3/4% RETIREMENT CERTIFICATE ACCOUNT**  
Term 36 Months or more  
No minimum deposit

**you can depend on us...**

**ANN ARBOR FEDERAL SAVINGS**  
11 OFFICES TO SERVE YOU IN: ANN ARBOR, BRIGHTON, CHELSEA, DEXTER, MANCHESTER, SALINE, YPSILANTI • Member FSIC





Mr. and Mrs. Todd W. Weber

## Gwen D. Patrick, Todd Weber Are Wed in Home Parlor Setting

An old-fashioned parlor setting was the scene of the Gwen Dawn Patrick and Todd William Weber wedding Saturday evening, March 25.

Gwen is the daughter of Mr. and Mrs. Patrick of Grass Lake and Mrs. Nancy Patrick of Manchester. Todd is the son of Mr. and Mrs. C. Weber of Chelsea and Mr. and Mrs. Vanderwoort of Chelsea.

The wedding took place at the home of Todd's grandparents, Mr. and Mrs. Art Barth Sr., on Austin Rd., Napoleon, with family and friends attending. Elder Ronald Harris a friend of the family, performed the ceremony.

Serving as maid of honor was Sandra Patrick, sister of the bride. Patrick Smith served as best man. A reception was held for the bride and bridegroom at the UAW Hall in Chelsea where many friends and relatives came to wish them happiness.

Mrs. Virginia Schiller, Cathy Patrick, and Kim Wireman served the guests.

## Chelsea Co-Op Nursery Children Paint Kites To Welcome Spring

Four-year-olds at the Chelsea Co-Op Nursery welcomed spring by watercoloring kites for the March wind to blow.

The week of April 2-9 has been declared "The Week of the Young Child" by the Washtenaw County Association for the Education of Young Children. Both classes are excited about going to the Manchester Black Sheep Repertory Theater on Tuesday, April 4 to see the play, "Hansel and Gretel." The children will also be visiting the Waterloo Recreation Area that week to learn about frogs.

## Town & Country Women's Club Has Kitchen Workshop

Town and Country Women's Club met March 28 in the First United Methodist kitchen. After a brief business meeting, Sandie Langbehn and Grace McCalla conducted a bread dough and pretzel bending workshop. Each member learned how to mix a basic bread dough, shape and bake pretzels. Each member took home a dozen soft, hot German pretzels.

Martha Schultz and Shannon Smith were guests at the meeting.

The next meeting will be on April 11 at Sandy Thurkows home.

## JC Auxiliary Planning Spring Flea, Craft Market

The March membership meeting of the Chelsea Jaycee Auxiliary was conducted at the residence of Sue Zink of 13362 North Lake Rd. President Barb Baker installed new members Nancy Rowe and Arlene Semek in a candlelight ceremony. Each was given a long stem yellow rose and a toast of welcome was made by Vice-President Carol Smith.

Standing reports were heard and then old business was reviewed. Sue Zink reported that the "Pet Food Drive" turned out to be more of a success than originally thought. Denise Martell told of a good time at the "Casino Night" social and Alberta Colby did the same for the "MJA Bowling Tournament." Members were reminded that the Auxiliary's special "Night-In" project was to take place March 30.

It was announced that a place for the Election Dinner had been found for April 21 and that invitations would be forthcoming. Members were asked to attend the upcoming "Easter Egg Coloring" and to keep in mind the "Crazy Cards" social for April.

There was a break in business while Alberta Colby and Nancy Rowe sat in the "Hot Seat" to answer probing personal questions by the membership. Colby let go of a long time secret nickname and Rowe gave some interesting background on herself.

Moving into new business, a "Flea & Craft Market" was discussed for the future. Arlene Sammek volunteered to look into the possibilities. The "Spring State Convention" was announced for May and everyone was asked to attend. Many seminars, workshops and personal dynamics programs are offered at these meetings and can be a benefit to individual and group development.

Sandy Meyer was presented with the "Girl of the Month Award" for February. Sue Zink and Denise Martell jointly received the "Boobie Award" for the past month. They were sure there would be no problem sharing it. The meeting was adjourned and dessert supplied by Ginny Wheaton was served.

For information or assistance in applying for veterans' benefits write, call or visit a nearby Veterans Administration office, VA hospital or a veterans' service organization.

## For a Good Guitar At A Low Price

Come to  
**THE MUSIC HUTCH**

CB & STEREO REPAIR  
PHONOGRAPH NEEDLES  
10 a.m. - 5:30 p.m.  
8107 Main St., Dexter  
Ph. 426-4380



Mr. and Mrs. Charles L. Patrick

## Linda Rapoza, Charles Patrick Are Wed at Methodist Church

Linda Rapoza and Charles L. Patrick were married Saturday, March 25 in Chelsea's First United Methodist church.

The Rev. Marvin McCallum conducted the double-ring ceremony which united the daughter of Mrs. Alice Pecanin of Sunnyvale, Calif., with the son of Mrs. Charles H. Patrick of Chelsea and the late Charles H. Patrick.

Honor attendants were Mrs. Colette Burrus of Raleigh, N.C., and Mike Blinder of Ypsilanti. Immediately following the marriage ceremony, a champagne

dinner reception was held at the home of Mr. and Mrs. Don Wood, sister and brother-in-law of the bridegroom.

A summer reception will be held for relatives and friends of the newlyweds. The bride is a graduate of Cupertino High school, Cupertino, Calif., and is employed by Sycor of Ann Arbor.

The bridegroom is a graduate of Chelsea High school. He attended Michigan State University and Eastern Michigan University and is employed by Arrow Electronics of Ann Arbor.

The new Mr. and Mrs. Patrick are residing at 2324 Woodridge, Apt. 1B., Ypsilanti.

## Agenda Listed for School Board Meet

The regular meeting of the Board of Education will be April 3 at 8 p.m. in the board room at Chelsea High school.

The agenda includes: a presentation of the swim club; preliminary recommendations for teacher's contracts for 1978-79; reports to the board from Robert Benedict, North Elementary school principal, and Henry De Young, special ed. director; a report from Nancy Schave, assistant principal for Chelsea High school, on student suspension and absences; and a report from Superintendent Charles Cameron on salary recommendations for school administrators for 1978-79.

## Easter Egg Hunt

(Continued from page one)

children came trooping back with their finds. Those who had found eggs marked this year with a smiley face, were the winners and, despite the odds, one boy came with two winners.

After the Easter Bunny soothed the hurt feelings of those who didn't find eggs by producing almost magically more eggs out of his basket, he then walked over to the nine winners to pass out prizes of stuffed animals.

The winners were: Tammy Williams, Joe Koscegi, Eric Lounsberry, Amber Marie Lukasiak, Todd Rowe, Tracy Kelemen, Alex Hammerschmidt, Brian Burg, and two-time winner J. P. La Roche.

# Metzger's

## German RESTAURANT

IMPORTED & DOMESTIC BEERS & WINES  
COCKTAILS

### GERMAN and AMERICAN FOODS

## NOW OPEN SUNDAYS

11:30 a.m. 'til 8 p.m.

For more information call 668-8987

203 E. Washington, Ann Arbor

Between S. 4th & 5th Ave.

Open Wed., Thurs., Fri., 4 p.m. to 11 p.m.  
Sat., 4 p.m. to 10 p.m., Sun., 11:30 a.m. to 8 p.m.

## Women's Club Marathon Bridge 6-Month Standings

EVENING LEAGUE	
1. Team 7	19,050
2. Team 3	14,780
3. Team 6	13,840
4. Team 1	12,950
5. Team 10	12,330
6. Team 5	12,120
7. Team 9	11,970
8. Team 4	10,800
9. Team 2*	8,550
10. Team 3*	8,090

\*Teams 2 and 3 have not played their February game.

AFTERNOON LEAGUE	
1. Team 10	17,520
2. Team 8	15,510
3. Team 3	14,770
4. Team 6	13,700
5. Team 4	13,580
6. Team 7	13,500
7. Team 9	13,490
8. Team 5	13,180
9. Team 2	11,000
10. Team 1	8,000

## AFTERNOON-EVENING LEAGUE

1. Team 1	15,640
2. Team 2	15,520
3. Team 3	14,750
4. Team 8	14,620
5. Team 7	13,460
6. Team 4	13,470
7. Team 6	10,230
8. Team 10	9,810
9. Team 9	9,430
10. Team 5	9,400

The club's annual pot-luck dinner will be held Thursday, May 25, at Inverness Country Club. All members will be contacted about their contributions for the party.

## Debate Coach...

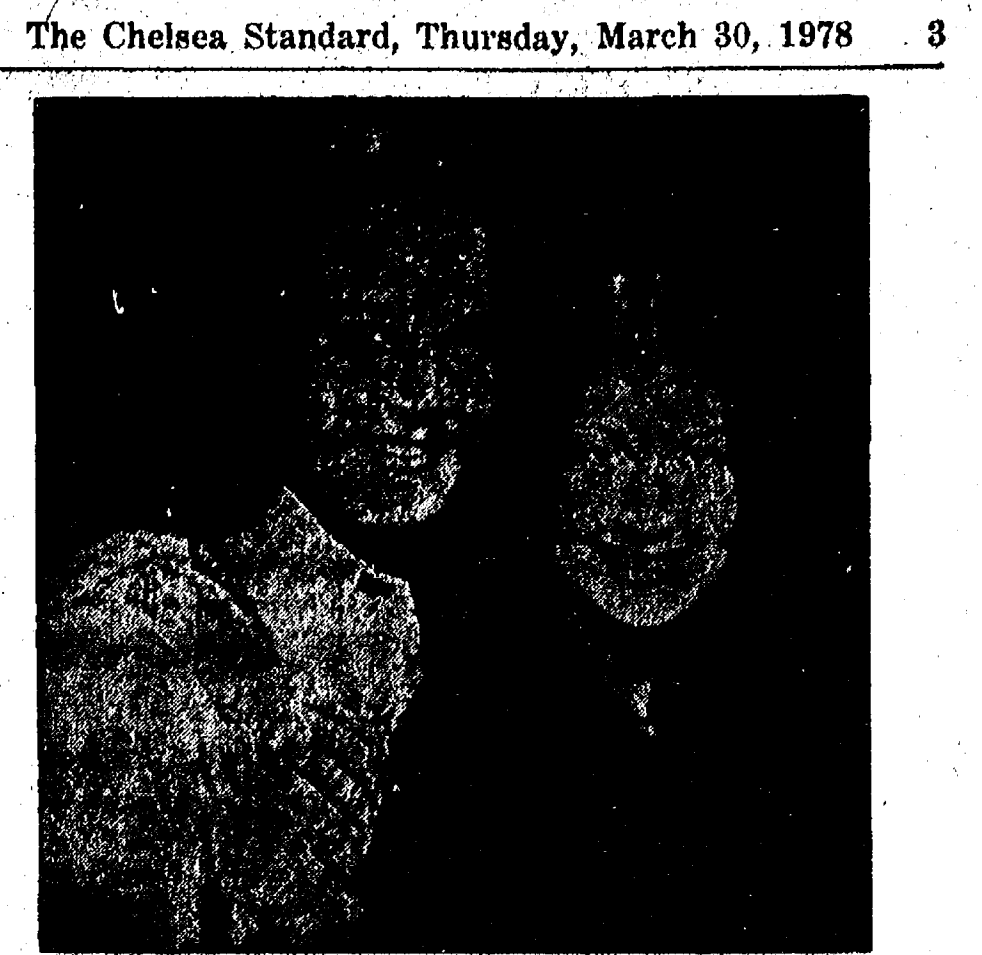
(Continued from page one)

ever, (September to February) has brought Coelius to his decision of retiring. "We do a lot of traveling during the season and I rarely have time to see my family," Coelius said. "When I started the team in 1967 I was single. Now I have a wife and two boys and I want to spend more time with them."

"I am very proud of the debate team. I feel they have been very successful. We have consistently qualified in the top 10 of Class 'B' schools over the last eight years and we won one state championship in 1972. Whoever replaces me will be getting a great team."

## IT'S A FACT

The American consumer benefits from Air Force research and development projects: Radomes, built by the military to protect radar equipment, are used commercially as swimming pool covers and tents. The Houston Astrodomes is based on a radome design.



SMITH-JONES: Mr. and Mrs. Neil Smith of 7777 Marshall Rd., Dexter, announce the engagement of their daughter, Sue, to Larry E. Jones, son of Mr. and Mrs. Errol Jones of 6017 Sibley Rd., Chelsea. The bride-elect is a 1965 graduate of Dexter High school and is employed by Thetford Corp., Dexter. Her fiancé is a 1972 graduate of Chelsea High school and is employed by American Broach and Machine Co., Ann Arbor. A May 20 wedding is planned.

## Dr. Christine Rosenfield Will Receive M.D. Degree from U. of M.

Dr. Christine A. Rosenfield, BS, PhD, daughter of Mr. and Mrs. Harry Culp of Grand Ledge, will receive her M.D. degree from the University of Michigan Medical School on June 2.

Rosenfield received her BS degree in chemistry in 1957 from the University of Michigan and her PhD in 1960 from Alberta University, Alberta, Canada. She worked as a research chemist for the Dow Chemical Co., from 1960 to 1968 and in 1968 was sent by the United Nations to work as a food and agriculture expert for three years at the Biological Institute in Sao Paulo, Brazil.

Edythe (Koebe) Culp, her mother, is a 1920 graduate of Chelsea High school. Her parents, Mr. and Mrs. Edwin Koebe, lived in Chelsea from 1914 to 1957.

## Basketball Coach...

(Continued from page one)

a good time and it was a lot of fun working with the kids."

Johnson will remain as physical education teacher for the school.

The Upper Michigan Copper Country is the largest commercial deposit of native copper in the world.



## GIRL SCOUT NEWS

**TROOP 385**  
Last week we put together our vase of tissue flowers for Easter. We also played a few games and sang the tap song. We will be joined by Troop 84 in the South school cafeteria for all our meetings on Wednesdays at 3:45 p.m.

Bree Michelsen, scribe.

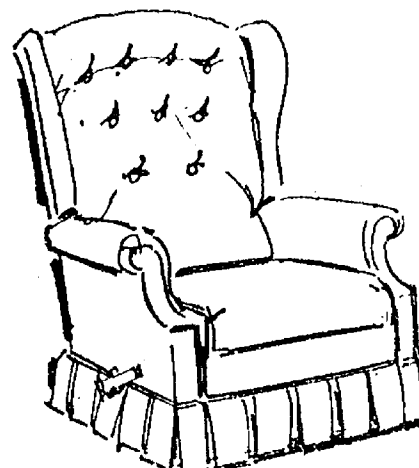
## Cub Scouts Race Home-Made Cars In Pinewood Derby

Fourteen Cub Scouts from Dens 13 and 15 participated in the Pinewood Derby held Thursday, March 23 at North school gym.

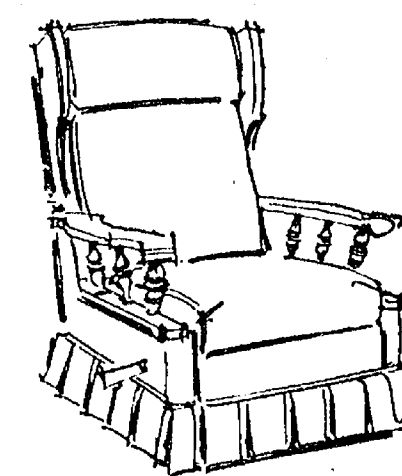
Winners were: Doug Jankuski, 1st place; Robbi Miller, 2nd place; and Frank DuVoy, 3rd place.

Each boy had worked on his own car ("with only a little help from their dads") since early February according to Christina Cook, den mother. "The kids all had a great time," she said.

relax,  
take it easy ...  
and save  
25%



Style 829  
REG. \$349  
\$259



Style 842  
REG. \$355  
\$266

## RECLINA-ROCKER®

by LA-Z-BOY®

For those who are hard to please when it comes to comfort and beauty, the La-Z-Boy® Reclina-Rocker® is the answer. This is the relax-in chair that is certain to complement your good taste and satisfy your family's desire for the ultimate in irresistible luxury. Once you sit in the Reclina-Rocker® and try its smooth rocking action, then recline to any position, even that of full bed, you'll wonder how you ever relaxed without it. You have a wide choice of colorful decorator fabrics made of 100% Vectra®. These fabrics are remarkably stain resistant, color fast, durable, luxurious and soft to the touch, non-allergenic and mothproof, and easy to clean. We'll be pleased to help you select the style and fabric of your choice.

**Markel**  
FURNITURE & CARPET  
MAIN ST. IN CHELSEA - PHONE 475-8621

CONGRATULATIONS TO THE WINNERS OF OUR LUNCHEON SWEETSTAKES... Joan Maier of Chelsea, Mr. and Mrs. Jack McGinn of Whitmore Lake, Robert Sanders of Ann Arbor and Elizabeth J. Clark of Jackson.

We wish everyone could have won the \$25 Gift Certificate and the Luncheon for two at Schumm's. Thank you for entering... and next time you're shopping in Chelsea, try the Luncheon buffet at Schumm's. It's delicious.

# BULOVA ACCUTRON®

YOUR CHOICE: \$75.

Until now, for \$75.00 you could afford only an ordinary watch. Now, for \$75.00, you can afford Bulova Accutron, the time-tested electronic watch that never needs winding.

And you have a choice of styles. For men and women. Select yours today.

A. Stainless steel, white enamel dial, \$78.00  
B. Silver-tone finish, blue dial and strap, \$78.00  
C. Silver-tone finish, silver dial, black strap, \$78.00  
D. Stainless steel, blue dial, black strap, \$78.00

## WINANS JEWELRY



## + Services in Our Churches +

**ST. PAUL**  
UNITED CHURCH OF CHRIST  
The Rev. R. J. Ratzlaff, Pastor  
Thursday, March 30—  
7:30 p.m.—Building and grounds.  
Saturday, April 1—  
9:00 a.m.—Confirmation classes.  
Sunday, April 2—  
9:00 a.m. and 10:30 a.m.—Church school.  
10:30 a.m.—Worship service and baptism.  
Tuesday, April 4—  
9:30 p.m.—Joyful Noise.  
7:30 p.m.—Board of Christian Education.  
Wednesday, April 5—  
3:30 p.m.—Junior Choir.  
7:30 p.m.—Chancel Choir.  
Thursday, April 6—  
7:30 p.m.—Memorial and gifts.

**OUR SAVIOR LUTHERAN CHURCH**  
1515 S. Main, Chelsea  
The Rev. William H. Keller, Pastor  
Sunday, April 2—  
9:00 a.m.—Sunday school and Bible classes.  
10:30 a.m.—Worship with Holy Communion.  
2:30-4:30 p.m.—Life with God class.

**ST. JOHN'S**  
UNITED CHURCH OF CHRIST  
Rogers Corners  
Every Sunday—  
10:30 a.m.—Worship service.

**ZION LUTHERAN CHURCH**  
Corner of Fletcher, Waters Rds.  
The Rev. John R. Morris, Pastor  
Saturday, April 1—  
9:00 a.m.—8th grade Youth Instruction class.  
10:30 a.m.—7th grade Youth Instruction class.  
Sunday, April 2—  
9:00 a.m.—Sunday school.  
10:45 a.m.—Worship with Holy Communion.  
Monday, April 3—  
8:00 p.m.—Senior Choir.  
Tuesday, April 4—  
4:00 p.m.—Junior Choir.  
7:30 p.m.—Shalom Circle.  
Wednesday, April 5—  
1:30 p.m.—Lydia Circle.  
7:45 p.m.—Martha Circle.

**GREGORY BAPTIST CHURCH**  
Every Sunday—  
9:45 a.m.—Sunday school.  
11:00 a.m.—Morning worship.  
8:00 p.m.—Young people.  
7:00 p.m.—Evening worship.  
7:30 p.m.—Thursday mid-week worship service.

**FAITH EVANGELICAL LUTHERAN CHURCH**  
9575 North Territorial Rd., Dexter  
The Rev. Lyle Hallauer, Pastor  
Every Sunday—  
9:00 a.m.—Worship service.  
10:00 a.m.—Sunday school for ages 4-11. Teen classes for 7th-12th graders.

**ST. JOHN'S EVANGELICAL AND REFORMED CHURCH**  
(United Church of Christ)  
Francisco  
The Rev. Virgil King, Pastor.  
Every Sunday—  
9:00 a.m.—Sunday school.  
10:30 a.m.—Church services.

**FIRST UNITED METHODIST CHURCH**  
The Rev. Marvin H. McCallum, Pastor  
Tuesday, April 4—  
7:30 p.m.—Board of Trustees in the Literat Room.  
Wednesday, April 5—  
9:00 to 12:00 a.m.—Cancer quilt party in Education Building in instruction room.  
3:30 p.m.—Kinder Choir.  
4:00 p.m.—Praise Choir.  
8:00 p.m.—Chancel Choir.  
Thursday, April 6—  
1:00 p.m.—United Methodist Women membership tea in Social Center.  
Sunday, April 9—  
10:00 a.m.—Worship service with Holy Communion. (Crib nursery for infants to age 2 and church school for children 2 through 5.  
10:20 a.m.—Church school for kindergarten through 6th grade children.  
11:00 a.m.—Junior High church school.  
11:00 a.m.—Adult Discussion group.  
11:00 a.m.—Coffee and punch hour.  
11:10 a.m.—Senior High church school.

**ST. BARNABAS EPISCOPAL CHURCH**  
20550 Old US-12  
The Rev. Fr. Jerrold F. Beaumont, B.S.P.  
Every Sunday—  
10:00 a.m.—Holy Communion.  
First, third, and fifth Sundays, and 7:30 p.m. every Wednesday.  
10:00 a.m.—Morning prayer.  
Second and fourth Sundays Church school and nursery every Sunday.  
Every Wednesday—  
8:15 p.m.—Bible study and discussion groups.  
First Wednesday of every month—Bishop's Committee.  
Third Thursday of every month—Episcopal church women.  
FIRST UNITED METHODIST  
Parks and Territorial Rds.  
The Rev. Glenn Kjellberg, Pastor  
Every Sunday—  
9:15 a.m.—Morning worship.  
10:00 a.m.—Sunday school.

**BETHEL EVANGELICAL AND REFORMED CHURCH**  
(United Church of Christ)  
Freedom Township  
The Rev. Roman A. Reineck, Pastor  
Every Sunday—  
10:00 a.m.—Worship service.

**CONGREGATIONAL CHURCH**  
(United Church of Christ)  
The Rev. Carl Schwarm, Pastor  
Sunday, April 2—  
10:30 a.m.—Worship and church school.

**ST. MARY CATHOLIC CHURCH**  
The Rev. Fr. David Philip Dupuis, Pastor  
Mass Schedule:  
Every Saturday—  
4:00-5:00 p.m. Confession.  
7:00 p.m.—Mass.  
Immediately after 7 p.m. Mass, Confession.  
Every Sunday—  
8:00 a.m., 10:00 a.m., 12:00 noon—Mass.

**METHODIST HOME CHAPEL**  
Chaplain Ira Wood, Pastor  
Every Sunday—  
8:45 a.m.—Worship service.

**WATERLOO VILLAGE UNITED METHODIST CHURCH**  
818 Washington St.  
The Rev. Glenn Kjellberg, Pastor  
Every Sunday—  
10:00 a.m.—Sunday school.  
11:15 a.m.—Worship service.

**FIRST CHURCH OF CHRIST SCIENTIST**  
1883 Washtenaw Ave., Ann Arbor  
Every Sunday—  
10:30 a.m.—Sunday school, morning service.

**NORTH LAKE UNITED METHODIST CHURCH**  
The Rev. John Elliott, Pastor  
Every Sunday—  
10:00 a.m.—Church school.  
10:00 a.m.—Worship service.

**FIRST ASSEMBLY OF GOD**  
The Rev. Richard Coury, Pastor  
Every Sunday—  
9:45 a.m.—Sunday school.  
11:00 a.m.—Worship service.  
6:00 p.m.—Evening worship.  
Every Wednesday—  
7:00 p.m.—Christ's Ambassadors. Missionettes. Bible meditation and prayer.

**FIRST UNITED PRESBYTERIAN CHURCH**  
Unadilla  
The Rev. T. H. Liang, Pastor  
Every Sunday—  
9:45 a.m.—Sunday school.  
11:00 a.m.—Worship service.

**NORTH SHARON BIBLE CHURCH**  
Sylvan and Washburne Rds.  
The Rev. Ronald C. Purkey, Pastor  
Every Sunday—  
10:00 a.m.—Sunday school.  
(Nursery available.) Junior church classes.  
11:00 a.m.—Worship service.  
6:00 p.m.—Senior High Youth meeting. Youth Choir.  
7:00 p.m.—Evening worship services. (Nursery available.) All services interpreted for the deaf.  
Every Wednesday—  
7:00 p.m.—Bible study and prayer meeting. (Nursery available.) Bus transportation available: 428-7222.

**CHURCH OF CHRIST**  
13661 Old US-12, East  
Evangelist John M. Hamilton  
Every Sunday—  
10:00 a.m.—Church school.  
11:00 a.m.—Worship service.  
Nursery will be available.  
6:00 p.m.—Worship service.  
Every Wednesday—  
7:30 p.m.—Bible study.



LIKE GUARDIAN ANGELS, parents watch their children hunt eggs while shivering in the mid-20 degree temperatures during the annual Easter Egg Hunt last Saturday morning. The little boy on the left closely examines his egg to see if it's a winner while the little girl in the foreground spots a colored object and reaches down for the prize.

**ST. JACOB EVANGELICAL LUTHERAN CHURCH**  
12501 Riethmiller Rd., Grass Lake  
The Rev. Andrew Bloom, Pastor  
Every Sunday—  
9:00 a.m.—Worship service.  
10:15 a.m.—Divine services.

**CHELSEA BAPTIST CHURCH**  
The Rev. James Stacey, Pastor  
377 Wilkinston St.  
Every Sunday—  
9:45 a.m.—Sunday school for the whole family.

11:00 a.m.—Morning worship service and children's church.  
6:00 p.m.—Evening service, informal singing, sharing, study and discussion. (Nursery care provided for all services.)  
Home Bible Studies each week in the homes of the elders.  
For information, call 475-8323.

**IMMANUEL BIBLE CHURCH**  
145 E. Summit St.  
The Rev. LeRoy Johnson, Pastor  
Every Sunday—  
9:45 a.m.—Sunday school, nursery provided.  
11:00 a.m.—Morning worship, nursery provided.  
6:00 p.m.—Evening worship.  
Every Wednesday—  
7:00 p.m.—Family hour, prayer, meeting and Bible study.

**CHELSEA FREE METHODIST FELLOWSHIP**  
Meetings at St. Barnabas Episcopal Church  
20500 Old US-12  
The Rev. William L. Cryderman, Pastor  
Call 475-8853 for information.  
Every Sunday—  
4:00 p.m.—Worship service.  
6:00 p.m.—Adult Bible Study and Sunday school for all ages.  
Every Wednesday—  
3:30 p.m.—Junior Choir at the Pratt residence, 625 N. Main St.  
Every Thursday—  
7:00 p.m.—Prayer meeting at the church except for the third Thursday of every month. Family Night in homes, call for location.

**ST. THOMAS EVANGELICAL LUTHERAN**  
Ellsworth and Haab Rds.  
The Rev. Jerome Dykstra, Pastor  
Sunday, April 9—

**SALEM GROVE UNITED METHODIST CHURCH**  
3320 Notten Rd.  
The Rev. Gerald R. Parker, Pastor  
Every Sunday—  
9:30 a.m.—Sunday school.  
10:30 a.m.—Worship service.

**CHURCH OF JESUS CHRIST OF LATTER-DAY SAINTS**  
Meetings at  
Church of Jesus Christ of Latter-Day Saints  
2141 Brockman, Ann Arbor  
Every Sunday—  
9:30 a.m.—Sunday school.

**BAHA'I FIRESIDE**  
Every Thursday—  
8:00 p.m.—At the home of Toby Peterson, 705 S. Main St. Anyone wishing to learn about the Baha'i faith is welcome.

**IT'S A FACT**  
Communications and Electronics industries are benefitting from Air Force research: Satellite communications have made possible live television shows from around the world. Portable color television cameras were made possible by integrated circuits, miniature components, and module construction techniques. Light-weight metals developed for aircraft, missiles, and various space projects are now used extensively throughout industry.

## Friends of Chelsea Players To Present Dinner Show

On April 22, Friends of the Chelsea Players will present Marjory Medders, of M and M Productions from Ann Arbor, in a dinner show at the dining room of the Chelsea Community Hospital. Miss Medders, accompanied by Jim Welhelsen at the piano, will be giving her interpretation of Broadway Musicals, from her repertoire of 1,000 tunes. The evening will include assorted wines and d-o-u-v-r-e-s (optional at 7:15 p.m.). Dinner at 8:00 p.m. will be tossed green salad, roast round of beef au jus, baked potato with sour cream, vegetable medley, chocolate milk cream Bavarian pie, coffee and tea. Tickets will go on sale at the Pump & Pantry in Chelsea on April 1.

## NOW ON TUESDAY NIGHTS CHICKEN BUFFET



with our Famous Deep-Fried Chicken and SPECIAL BARBECUED CHICKEN also mashed potatoes and gravy, dressing, and salad bar. Serving from 4:30-9:00

at the CAPTAINS TABLE  
8093 MAIN ST., DEXTER PH. 426-2811

## CALL OR STOP IN CHELSEA GLASS, INC.

WORKMANSHIP AND MATERIALS FULLY GUARANTEED  
Open Daily 9 a.m. to 5 p.m.; Sat., 8 a.m. to 1 p.m.  
140 W. Middle, Chelsea Phone (313) 475-8667

**WE REPAIR AND REPLACE:**  
★ STORE FRONTS ★ MIRRORS  
★ FURNITURE TOPS ★ PATIO DOORS  
★ SHOWER DOORS ★ TUB ENCLOSURES  
★ THERMOPANES ★ AUTO GLASS - Including Windshields  
Free Pick-up and delivery on auto work.  
**Storm Door & Window Reglazing & Screens**  
COMMERCIAL BUILDINGS OR RESIDENTIAL  
**PROMPT SERVICE REASONABLE PRICES**

## AUCTION

We will sell the following farm machinery, shop tools, household and antique items at public auction, located 3 miles north of Manchester, or 9 miles south of Chelsea, to Pleasant Lake Rd., west 1 1/2 miles to Smythe Rd., 1/2 mile north on

### SATURDAY, APRIL 8

Beginning at 10:30 a.m.

LOREN HELLER, AUCTIONEER - Ph. Chelsea 475-7083

### FARM MACHINERY

1971 Ford 5000 diesel tractor with 16.9-4-34 tires, 3-point hitch & 727 loader with dirt bucket. Super W-6 McCormick tractor with 16-9-30 tires and PTO hydraulic pump.

McCormick 127 special-purpose self-propelled combine with 10-foot grain head.  
John Deere 3-bottom, 3-point plow with clod buster.  
Case 3-bottom pull-type plow.  
Case 13-hole grain drill on rubber.

John Deere 17-hole grain drill. Case 4-row corn planter with 3-point hitch.  
Crow-Foot packer for a 3-bottom plow.  
11-foot 6-inch Kewanee disc. Oliver 3-section drag.  
John Deere 14-T baler.  
Case hay-conditioner.  
New Holland hay rake on rubber.

New Idea hay rake on rubber. New Idea one-row corn picker. A.C. 60 combine.  
Farm wagon with hydraulic dump.  
Case 135 manure spreader (P.T.O. driven).  
Elevator with electric motor.  
Diamond-tread turf tires (2) to fit Ford tractor.  
Gehl No. 50 10-inch hammer mill.  
42-inch front - mounted snow blade.  
Old corn planter.  
Platform scales.

### TRUCKS

1969 Chevrolet pick-up C-10.  
1952 Ford 6 truck.

### MISC.

Lawn mowers. Car rims. 16.5 mud tires. Car tires. Squirrel cage blowers. Fans. Lengths of pipe. Pipe fittings. Angle iron. Cable controls. Small diameter steel cable. Electric motors. Entry box. Electric fittings. Demming water pump. Small LP gas heater. Miscellaneous shop tools.

### HOUSEHOLD & ANTIQUES

Kitchen table with 4 chairs. Theater chairs. High chair. International cream separator. Maytag wringer. Sears 40-inch kitchen fan. 2 bunk-beds. Wooden floors. 2 kitchen sinks. Books. Like new violin with case. Many other items too numerous to mention.

TERMS: Cash or Check with proper I.D.  
Not responsible for accidents on grounds day of sale.

**RENO FELDKAMP - FLOYD PARR**  
and CONSIGNORS, Owners

David Pratt, Manchester  
Clark

Loren Heller, Chelsea  
Auctioneer

## FARM MACHINERY AUCTION

Located 16 miles north of Adrian on M-52 to US-12, then 3 1/2 miles west or 4 miles north of Tipton and 1 1/2 miles west on US-12, on north side

### SATURDAY, APRIL 1

Beginning at 12:30 p.m.

International 806 diesel with quick hitch and bolt-on duals. M.T.A. with new rubber, 3-pt. hitch and clamp-on duals. Super M with good rubber and complete overhaul.  
Super M with new M&W pistons and engine, transmission and rear end completely gone thru. 550-5-16 pull type plow with new collars, etc.  
J.D. 8' wheel disc, all new discs. IH 8' wheel disc with new front blades.  
Massey Ferguson 10' wheel disc, completely gone through.  
555 J. D. 3-16 pull plow.  
No. 60 IH 3-16 pull plow.  
Flat box wagon with small grain sides, new rubber.  
484 IH 4-30" row, rear mount, 3-pt. hitch cultivator.  
J.D. 4-row rotary hoe, 3-pt. hitch.  
Duran 10' and 12' cultipackers. J.D. 484 A 30" planter with herbicide and insecticide attachments.  
Three 50-gal. barrel field sprayer on trailer.  
IH 12' wheel disc with attached spike tooth drag.  
Two 250-bu. Kilbros bottom un-wagons with New Idea running gears and wide flotation tires, used 1 year.  
Two Kilbros 200-bu. gravity wagons with Ned Idea running gears, sandblasted and repainted.  
IH hydraulic cylinders.  
Two 300-gal. fuel tanks (1 diesel and 1 gas).  
7 Sult Case front end weights.  
1965 GMC 1 1/2-ton grain truck with good rubber.  
Chev. truck with hoist and tilt box (needs work).

Please be on time as we have very few small items.

TERMS: CASH.

**Mr. & Mrs. John E. Miller**  
OWNERS

Paul & Jerry Robinson, Auctioneers  
Phone Delta, O., 822-3288

# END OF THE MONTH SPECIALS

- at -

## LLOYD BRIDGES CHEVROLET

CHECK THESE PRICES BEFORE YOU BUY!

Large Selection of 78 Chevettes

### 1978 MALIBU CLASSIC

4-dr., 305 V-8, air, AM-FM  
Stock No. 3594. Retail \$6,677.54  
**SALE - \$5,629**

### 1978 IMPALA SPORT COUPE

2-dr., V-8, auto., air, AM-FM  
Stock No. 3572. Retail \$6,454.95  
**SALE - \$5,322**

### 1978 IMPALA SEDAN

4-dr. 305 V-8, auto. Many extras.  
Stock No. 3591. Retail \$6,488.95  
**SALE - \$5,350**

### 1978 MONTE CARLO LANDAU Coupe

305 V-8, auto., AM-FM, air, Loaded.  
Stock No. 3606. Retail \$7,707.90  
**SALE - \$6,488**

### 1978 MONTE CARLO LANDAU Coupe

305 V-8, auto., AM-FM, air, Loaded.  
Stock No. 3587. Retail \$6,969.00  
**SALE - \$5,913**

### 1978 FLEETSIDE 4-WHEEL DRIVE

with power angle blade, Cheyenne pkg.  
Loaded. Stock No. 4977.  
Retail \$9,096.00  
**SALE - \$7,548**

### 1978 CAPRICE CLASSIC

4-dr. 305 V-8, auto., air, AM-FM. Loaded.  
Stock No. 3571. Retail \$8,478.95  
**SALE - \$6,893**

### 1978 CAPRICE CLASSIC

2-dr. Power windows, power brakes, air, AM-FM.  
Loaded. Stock No. 3580. Retail \$7,805.95  
**SALE - \$6,371**

### 1978 CAPRICE CLASSIC

2-dr. V-8, auto, AM-FM. Loaded. Stock No. 3573.  
Retail \$8,447.95  
**SALE - \$6,866**

## MARCH SERVICE SPECIAL

SAVE \$5.75

## TRANSMISSION SERVICE

**\$23.95** plus tax

Includes change transmission fluid and filter, check all adjustments, road test.

MORE THAN 100 NEW CARS AND TRUCKS IN STOCK

# LLOYD BRIDGES CHEVROLET

I-94 and M-52, Chelsea

Phone 475-1373





**PRIZEWINNERS:** Exhausted after scrambling among the 100 dozen eggs for those marked with smiley faces, these eight children gather around the Easter Bunny clutching their well-earned prizes of stuffed toy rabbits. Winners are: Joe Koscegi, Tammy Williams, Eric Lounsbury, Amber Marie Lukaszak, Todd Rowe, Tracy Kelemen, Alex Hammerschmidt, Brian Burg, and two-egg winner JP La Roche. Standing in the back row from left to right are Jaycees Jerry Martell, chairman, John Williams, Morgan Rowe, Charlie Sprawka, and Jim Samek.

## Police Nab Walkaways

(Continued from page one)

regular patrol when they spotted three men hitchhiking in front of Glenn Heim's service station. While McDougall pulled over to the three men, Clark fled west, leaving his companions. At that time McDougall and Hendrick seized the remaining two, searched them and put them in the car.

According to the report McDougall asked Kish and Watson if they were from the Cassidy Lake school and the men replied yes. They also told him that they were lost and looking for the way back to Cassidy Lake. McDougall reported finding identification cards in the men's back pockets.

Washtenaw County's K-9 (canine) unit was called to the scene to search for Clark but by 2:45 a.m. Wednesday gave up the search. Later, however, they received a call from a guard at the Chrysler Proving Grounds about an unidentified person seen running through the grounds at 9:30 a.m. Wednesday.

Officers from Manchester, Chelsea, and Washtenaw County Sheriff's Department arrived on the scene where they surrounded the grounds. Deputy William McFarlane and his dog Rohald began tracking the field and in short time found Clark hiding behind a tree.

The three men were reclaimed by Cassidy Lake officers who brought them to Jackson State Prison where, according to Cassidy Lake deputy superintendent Bruce Cummings, "they will be reclassified and sent to a facility offering greater security."

Cassidy Lake Technical School is a minimum security prison for youthful offenders, 16-25 years old who have committed felony. The grounds are guarded by unarmed personnel. There are no fences or walls. "A person can walk out of here just as anyone can walk out of his or her own front door," Cummings commented. To date 13 prisoners have walked out of the school, and Cummings estimates that there is a 90 percent recovery rate.

## Headstart Parents Elect Officers

At their monthly meeting earlier this month, the Chelsea-Dexter-Manchester Headstart Home Based Program Parents held election of officers.

Mrs. Carol Ledford, 1890 N. M-52, Chelsea, was elected chairperson. Vice-chairperson will be Debbie Munding, 17935 Old US-12, Chelsea. Secretary for the coming year will be Mrs. Cindy Aiken, 15935 Kilmer Rd., Grass Lake.

Mrs. Munding and Miss Kim Reilly, 215 E. Park Chelsea, are the representatives to the Headstart Policy Council.

## License Plate Stolen From Pick-up Truck

The rear license plate on a 1978 Chevrolet pick-up truck was stolen Saturday night, March 25, according to police reports.

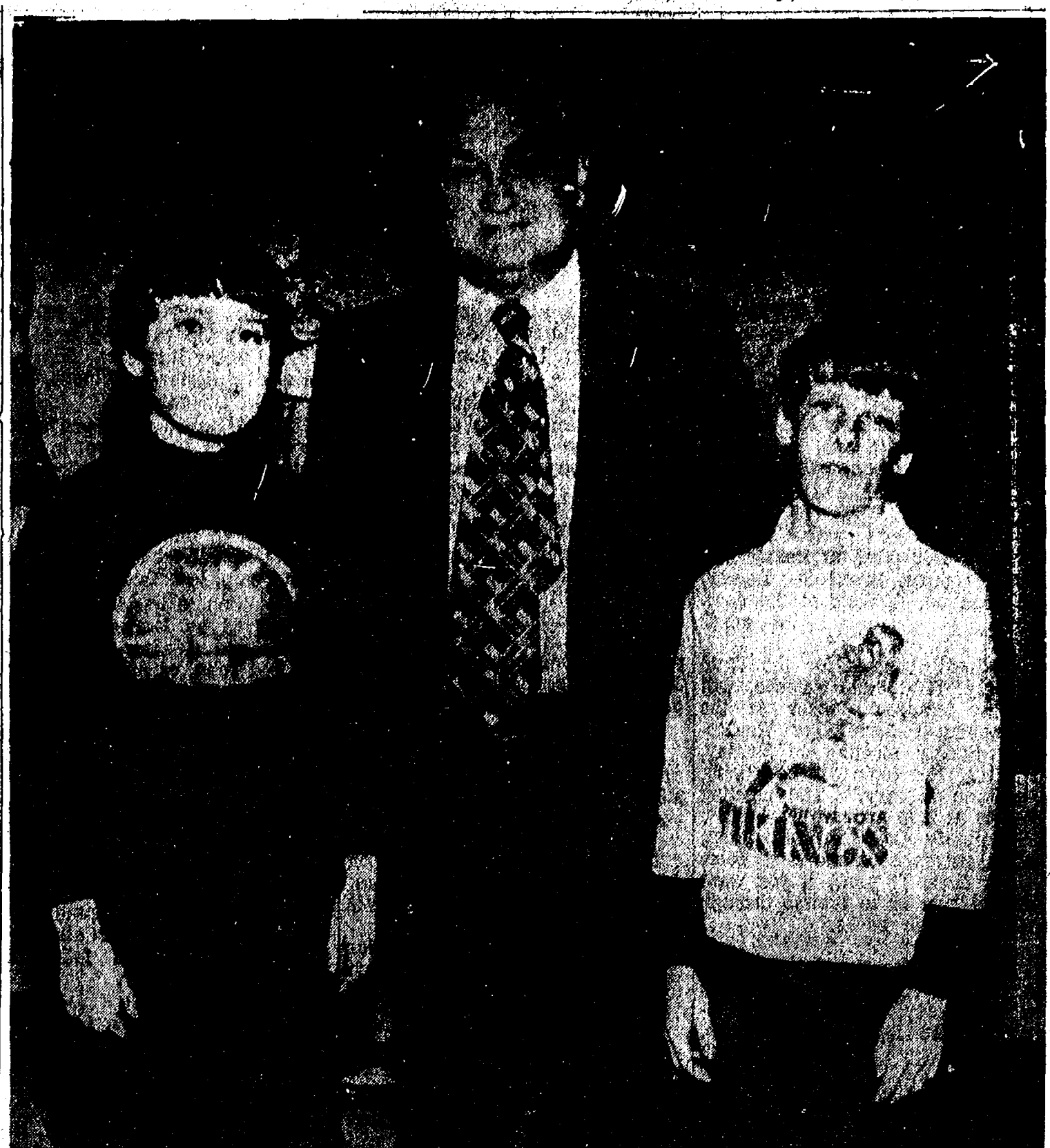
The pick-up belonged to Alan Gunnesch, 8105 Roepke Rd., Gregory. The truck was parked in the Chelsea Milling Co. lot where Gunnesch works the night shift, the report said.

According to the report, Gunnesch claimed he saw the plate on his truck that afternoon when he was washing it and that the plate was attached with self-locking nuts and washers.

## Personal Notes

Mr. and Mrs. Floyd E. Gentner, 316 Jackson St., entertained their family and friends Easter weekend. Included in the guests were, Mr. and Mrs. Duane L. Gentner and their children, Lisa and Christopher, of Hanover Park, Ill.; Mr. and Mrs. Terry D. Gentner of Ann Arbor; Elvora Wright of Chelsea; Mrs. Russell Abdon of Chelsea; Robert Abdon of Chelsea; and Mr. and Mrs. Ronald P. Gentner of Ypsilanti, whose daughter Tracy was in Paris, France for the week. Their son Christopher, 2½, "enjoyed meeting the Easter Bunny at the egg hunt at Chelsea High school on Saturday morning," Mrs. Gentner said.

Michigan's highly diversified skilled labor force mans several hundred different types of industry.



**SPELLING CHAMPS:** "Presence" was the winning word for Scott Miller (right) at the annual Spelling Bee, sponsored by The Detroit News, at South school last week. Rodney Satterthwaite, left, was the runner-up. Miller will go to the district Spelling Bee to be held in Hartland April 5. Forty South school children from four classrooms participated in the contest which is now in its 50th year. South school principal Sylvester Wojcik is shown here with the winners.

## Farm Record Keeping Workshop Scheduled By Extension Service

Washtenaw County Co-operative Extension Service is holding a basic record keeping and tax management workshop. Topics to be covered will include farm inventories, depreciation schedules and tax management tools for income tax savings. Both husbands and wives are encouraged to attend. This workshop will be on Tuesday, April 11, from 8 to 10 p.m. at the Co-operative Extension Service in the County Service Center, 4133 Washtenaw Rd., Ann Arbor. Call Ken Ludwig at 973-9510 for further information.

## Carl's Cleaning Service

521 S. Main St.

Chelsea, Mich.

Professional Carpet & Upholstery Cleaning

BUSINESS - RESIDENTIAL

FREE ESTIMATES

Phone 475-8007

## 34 Years Ago...

(Continued from page two)

week, one of Chelsea's oldest business establishments will change ownership on Saturday, April 1, when John A. Glick of Lansing becomes the owner of the W. P. Schenk & Co. department store.

The local committee in charge of the Red Cross War Fund drive reports that a total of \$3,833.92 has been collected and pledges totalling approximately \$2,000 have been received from employees of Federal Screw Works.

## FULL LINE SUPERMARKET

BEER - WINE - LIQUOR

AUTHORIZED

FOOD STAMP STORE

MARATHON GAS PUMPS

# Jiffy market

Big Enough To

Serve You . . . Small Enough To Know You!

Sale Prices Effective Thursday, March 30, thru Sunday, April 2

Open 7 Days A Week

7 a.m. to 10 p.m.

Corner Sibley & Werkner Rds.

PHONE 475-1701

**Guaranteed Satisfaction — Courteous Service — U.S.D.A. Choice Meats**

WONDER  
**COUNTRY STYLE BREAD** 1 1/4-Lb. Loaves **39¢**  
NABISCO  
**RITZ CRACKERS** 1-Lb. Box **89¢**  
BULK LONGHORN COLBY  
**STORE CHEESE** Lb. **\$1.29**  
U. S. GRADE A LARGE  
**FRESH EGGS** Doz. in Crtn. **69¢**  
VELVET CREAMY  
**PEANUT BUTTER** 2-Lb. Jar **\$1.19**  
U. S. NO. 1  
**JONATHAN APPLES** 3 lbs. **89¢**

**U.S.D.A. Choice Freezer Beef**

SIDES - FRONTS - HINDS - LOINS - FULL RIB

Cut, Wrapped, Frozen To Your Specifications.

LOCAL FARM BEEF FOR SALE.

CORN-FED BEEF AT ITS BEST!

Custom Cutting, Grinding, Wrapping and Freezing

**YOUR BEEF**

QUICK SERVICE on HAULING and SLAUGHTERING



## BASKART SPECIAL

FRESH GROUND - LEAN

**HAMBURGER** lb. **89¢**

SATISFACTION GUARANTEED

HOLSUM

**Hamburger or Hot Dog Buns** 8-Ct. Pkg. **49¢**

15-OZ. CAN

**LONG HORN CHILI with Beans** . . . **49¢**

## FRITO-LAY JIFFY MARKET DORITOS

REG., 8 1/2-Oz. Pkg.

TACO, 7 1/2-Oz. Pkg.

NACHO CHEESE, 7 1/2-Oz. Pkg.

**59¢**

## JIFFY MARKET SPECIAL!

U.S.D.A. CHOICE BEEF

## STEAK SALE

Chuck Steak . . lb. 89¢ Sirloin Steak . . lb. \$1.79

T-Bone Steak . . lb. \$2.39 Porterhouse Stk., lb. \$2.49

Tender, Delicious Steak that you can enjoy!

## JIFFY MARKET MEAT DEPT.

# WHOLE PORK LOINS

As is or Sliced

**\$1.19** lb.

Lean and Tender

**PORK BUTT ROAST** . . . . lb. **\$1.09**

**PORK STEAK** . . . . . lb. **\$1.29**

HICKORY SMOKED SLAB, Whole or End

**Bacon** . . lb. **\$1.09**

32-OZ. PKG. COURTLAND VALLEY'S FINEST

**Sauerkraut** . . 39¢

10-OZ. PKG. ECKRICH

**Smoky-y-Link** 99¢

HERRUP

**Liver Sausage** . . . lb. 79¢

HOME-MADE GARLIC OR REG.

**Pk. Sausage** \$1.09

MICHIGAN CHUNK

**Bologna** . . lb. 99¢

## JIFFY MARKET MARATHON GAS

Top Quality Gas

REGULAR

**GAS 59.9**

OPEN 7 DAYS A WEEK

7 a.m. to 10 p.m.

Gol. Including All Taxes

Homogenized  
**MILK**

**\$1.39** gal.

Buy the Best - Buy Farm Maid!



FARM MAID 1-LB. CRTN.

**COTTAGE CHEESE** . . 69¢

FARM MAID

**SOUR CREAM** . . . pt. 69¢

FARM MAID

**HALF and HALF** . . qt. 59¢

**GAS PUMPS & STORE OPEN 7 a.m. to 10 p.m. 7 Days a Week — U. S. Authorized Food Stamp Store — Daily & Sunday Papers**



# DEATHS

## Community Calendar

Regular meeting of Herbert J. McKune Unit No. 31, American Legion Auxiliary, Tuesday, April 4, 8 p.m. at St. Mary school.

Royal Arch Masons No. 140 regular communications, Thursday, April 6, 7:30 p.m. at the Temple.

Masons and OES of Dexter, auction and card party Saturday, April 1, 7:30 p.m., at Dexter Masonic Temple, Broad St., Dexter. \$1 donation. Tickets at the door. adv42

Retired librarian for the State Library, Mrs. Janice Beebe, will be the featured speaker at the Genealogical Society of Washtenaw County meeting on Sunday, April 2. Her topic will be "Using the State Library." The meeting begins at 2:30 p.m. at Washtenaw Community College, LMC Bldg., south entrance on the first floor. Come early (1 p.m.) if you want special help or to browse through the available books.

Inverness Country Club will hold a euchre party and pot-luck at 6:30 p.m. Tuesday, April 4. Phone 475-7887 or 475-1133 for reservations. adv42

Lyndon Township Planning Commission meets the second Thursday of the month at the Township Hall, 8 p.m. adv42t

Sharon Township Planning Commission regular meeting third Wednesday of each month. adv42t

What you have always wanted to know about kindergarten. A panel of principals and kindergarten teachers from Chelsea schools will discuss your questions on Thursday, March 30, 7:30 p.m., at North school Media Center. All interested are welcome. For further information or to submit questions, call 475-8471, Barb Vrsters, or Lis Nichols, 475-8859.

North Lake Co-Op Nursery has openings in its 4-year-old sessions. For information contact Cindy Beauchamp, 475-8517. adv38

Lyndon Township Board regular meetings the third Tuesday of each month, 7 p.m., in Lyndon Township Hall. adv42t

Chelsea Co-Op Nursery is now taking applications for the 1978-79 school year. To enroll, call Kay Johanson, 475-7765 or 475-8316. advx43t

Sylvan Township Board meeting the first Tuesday of the month, at 7 p.m., at Sylvan Township Hall. adv42t

Lima Township Board regular meeting the first Monday of the month, 8 p.m., at Lima Township Hall. adv42t

Lima Township Planning Commission regular meeting the third Tuesday of every month, 8 p.m., at the Township Hall. adv42t

Olive Lodge 156 F&M regular communications, Tuesday, April 4, 7:30 p.m. at the Temple.

Chelsea Communications Club, fourth Wednesday of each month at 7:30 p.m., in the Chelsea Lanes basement meeting room.

Chelsea Senior Citizens meet the third Friday of each month, 6 p.m., at St. Mary's school. Pot-luck, games and cards.

Parishioners of St. Mary's who need a ride to church for Sunday mass call Diane Killea, 475-9309.

### Mrs. Elmer Winans

Services Slated Today for Life-Long Area Resident

Mrs. Elmer E. (Cora A.) Winans, 91, a life-long Chelsea area resident, died at home, 154 Park St., on March 23.

She was born July 22, 1886 in Lima township to Orrin and Angelina Dancer Burkhardt. She was married to Elmer E. Winans, Oct. 29, 1908. He survives.

Mrs. Winans was graduated from Chelsea High school in 1905. She was a member of the First Methodist church of Chelsea. She and Mr. Winans spent their entire married life in Chelsea, having celebrated their 60th wedding anniversary last Oct. 29.

In addition to her husband, she is survived by four sons, David, Charles and George, all of Chelsea, and John, of Ann Arbor; two daughters, Mrs. Alberta Park of Chelsea, and Mrs. Mary Jean Oosterle of Langsville, O.; 16 grandchildren; and 17 great-grandchildren.

She was preceded in death by two sons, Duane in 1940 and Robert in 1972.

Funeral services will be held Thursday, March 30 at 2 p.m. at the Staffan Funeral Home with the Rev. Marvin H. McCallum officiating. Burial will follow in Oak Grove Cemetery.

### J. Donald Smith

Chelsea Woman's Father Dies Saturday in Jackson

J. Donald Smith, 71, 1021 S. Du-rand St., Jackson, died March 25 at Foote Hospital West in Jackson.

Born May 6, 1906 in Monroeville, O., to Dr. James Henry and Louella Louise (Jones) Smith, he resided in Lorain, O., Grosse Pointe Farms, and Jackson.

Smith was a member of the Christ Methodist church in Detroit and was employed at the United States Rubber Co., in Detroit before his retirement.

He married Mary Eleanor Horsley in Lorain, O. on March 29, 1930. She preceded him in death.

Smith is survived by one daughter, Mrs. George (Janet) Shaw of Chelsea; one son, James Horsley Smith of Glen Ellyn, Ill.; four granddaughters, Susan, Linda, and Jeanne Shaw, and Shelly Smith; two grandsons, Geoffrey Shaw and James Troy Smith; and two sisters, Mrs. Robert (Elizabeth) Burke of Gibsonburg, O., and Mrs. D. Finley (Henrietta) Wood of Bay Village, O.

Funeral services were held Wednesday, March 29, 10:30 a.m. in the Pastor William L. Cryderman of the Chelsea Free Methodist church officiating.

Burial followed at the Ridge Hill Memorial Park in Lorain, O. Memorial contributions may be made to the Chelsea Free Methodist church.

### Floyd C. Northrop

Chelsea Lanes Manager Dies Wednesday at Hospital

Floyd C. Northrop, 58, of 607 S. Main St., died Wednesday, March 29 at Chelsea Community Hospital. Born Oct. 16, 1919 at Plymouth, he was the son of Glen and Amy Allen Northrop.

He was married Oct. 6, 1942 to Maurine Ellis who survives.

Survivors, in addition to his widow, are three daughters, Mrs. Gerald (Karen) Van Demark, Ypsilanti, Mrs. Walter (Martha) Bible, Ypsilanti, and Mary, at home; one son, David, also at home; two sisters, Mrs. Knowles (Beth) Bueres of Salem, and Mrs. Frank (Clara) Cervilli, Plymouth; and one grandson, Andrew Van Demark of Ypsilanti.

Mr. Northrop managed bowling lanes in Ann Arbor and Ypsilanti and for the past five and one-half years had been the manager at Chelsea Lanes.

Funeral services will be Saturday, April 1 at Staffan Funeral Home with the Rev. Marvin H. McCallum officiating.

The family suggests that memorial contributions may be made to the American Cancer Society.

### Mrs. William Minick

Former Chelsea Resident Dies March 21 in Florida

Gertrude Minick, 69, died March 21, at Avon Park, Fla. She was born Feb. 9, 1909 in Munson, Pa., to Emil and Minnie Kochel Storch.

Mrs. Minick was married to H. William Minick May 17, 1930. He survives.

Mrs. Minick had worked at Chrysler Introl Division in Ann Arbor until retiring in 1969.

She is survived by three sons, Gary Minick of Chelsea, David Minick of Manchester, and Timothy Minick of Nucla, Colo.; one daughter, Mrs. Don (Gwen) Schrader of Chelsea; 12 grandchildren; one brother, Harvey Stark of Ypsilanti; and three sisters, Mrs. Fred (Violet) Craig of Milan, Mrs. Ernest (Eleanor) Hubert of Monroe, and Mrs. John (Lorraine) Grant of Wyandotte.

One son, three sisters and one brother preceded her in death.

Funeral services were held March 25, at St. Mary's Catholic church with the Rev. Fr. Philip Dupuis officiating. Burial followed in St. Joseph's Cemetery, Whitaker. The rosary was recited Friday evening at Staffan Funeral Home.

Memorials may be made to the American Cancer Society.

### Walter Schittenhelm

Services Slated Thursday Afternoon in Grass Lake

Walter J. Schittenhelm, 82, 4321 Maute Rd., Grass Lake, died at Chelsea Community Hospital Monday, March 27.

Funeral services will be held Thursday, March 30 at 3 p.m. at the Burden & Son Funeral Home, 418 E. Michigan Ave., Grass Lake, with the Rev. John Morris officiating. Burial will follow at East Cemetery.

Mr. Schittenhelm is survived by his widow, Norma; one son, John Skittenhelm of Chelsea; two daughters, Mrs. Leroy (Ruth) Bristle of Chelsea, and Mrs. Robert (Mary) Bauer of Chelsea; nine grandchildren; three great-grandchildren; and several nieces and nephews.

### Dwight L. Gadberry

Former Chelsea Resident Dies at Mesa, Ariz.

Dwight Lorenzo Gadberry, 70, 427 N. 16 St., Mesa, Ariz., died Wednesday, March 22 at Desert Samaritan Hospital, Mesa, Ariz.

He was born Aug. 14, 1907 in Emporia, Kans., to William L. and Eva May Priest Gadberry.

During the 1930's he moved to Michigan where he established his own office and did calligraphy for the University of Michigan, Ann Arbor. He also made citations, memorials, illuminations and testimonials for such notables as President Eisenhower, Douglas MacArthur, King Paul and Queen Fredricka of Greece, Queen Wilhelmina, and Princess Juliana of the Netherlands.

He also hand-lettered thousands of diplomas for University degrees. Gadberry studied at the University of Michigan's College of Architecture and Design as a special student from 1934 to 1937.

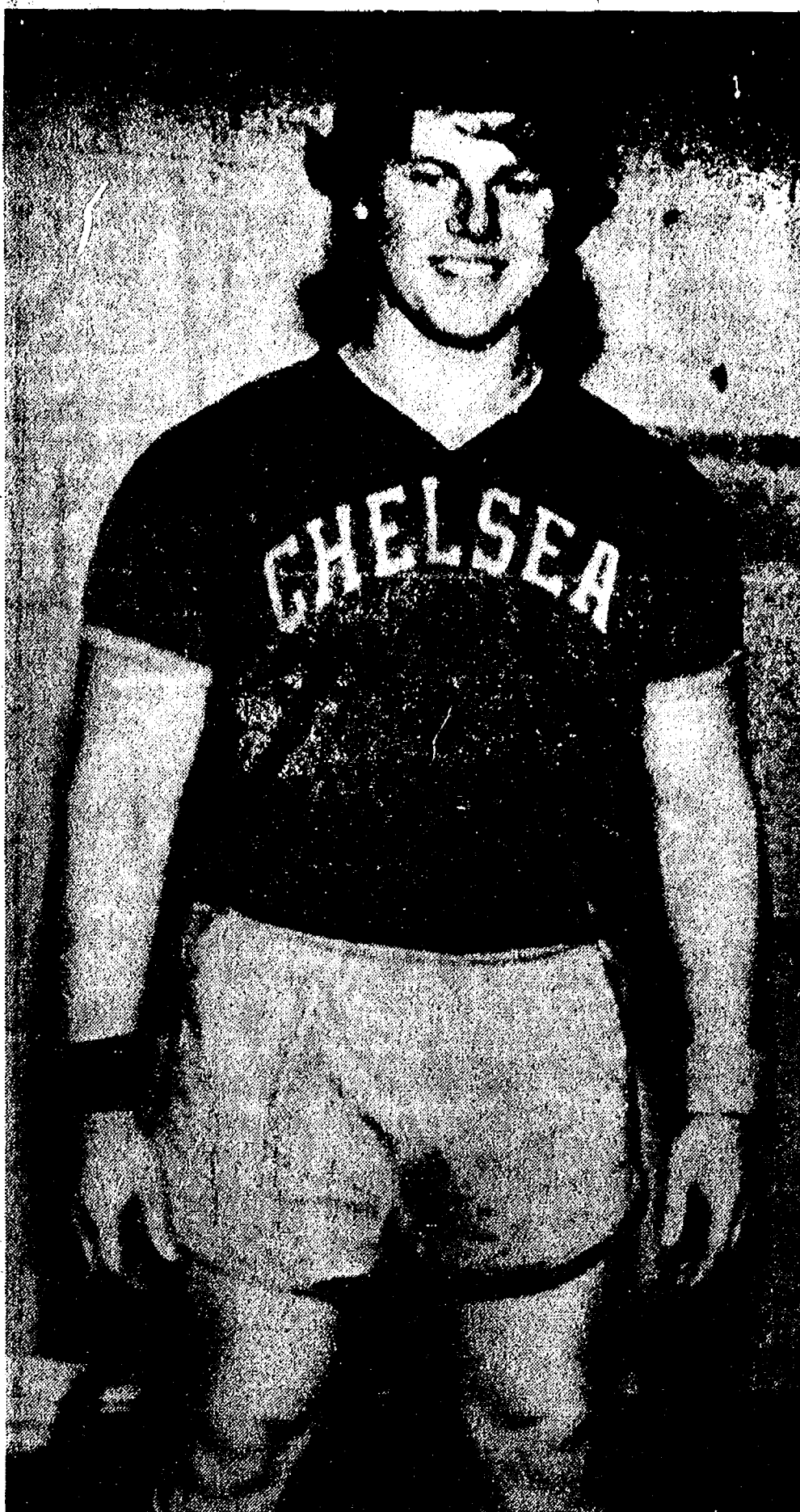
He married Helen Roads June 23, 1940 in Macedonia and they lived in Chelsea until the fall of 1974 when they moved to Dreamland Villa in Mesa, Ariz.

He was member Velda Rose United Methodist church in Mesa; the Dreamland Villa community club in Mesa; and the Michigan club. He was a former Kiwanian and a sponsor of the Youth Group at the Methodist church in Chelsea for eight years. He was also a veteran of World War II.

He is survived by his widow, Helen; one brother, E. E. Gadberry, Emporia, Kans.; one sister, Mrs. Herman A. Carter, McPherson, Kans.; five nephews; and one niece.

Memorial services were held at the Chapel of Prayer in Mesa, on Saturday March 25 at 3 p.m. Cremation followed with burial in Memorial Lawn Cemetery in Emporia, Kans.

The family suggests memorials be made to the Cancer Fund or to the Chelsea United Methodist Youth Fund.



BOB BALL broke the Chelsea High school shot put record and, at the same time, placed fourth in the event by throwing the eight-pound ball 51 feet 1/2 in. In last Friday's Huron Relays at Eastern Michigan's Bowen Field House, Record holding is not new to Ball, a sophomore, who already held the school discus throwing record, and Coach Bert Kruse believes he could be a real factor in the Bulldogs' season.

Tax time. And many of us would really like to know how to fill out those forms. You can. The IRS has sample filled-in tax forms you can send for. To learn which ones they have, as well as all the

## CHS Grades Place High in EMU Forensics Tourney

Brad Glazier and Dale Heyd-lauff, both juniors at Eastern Michigan University and former Chelsea High school students, competed and placed during the annual Huron Invitational Forensics Tournament March 17-18, hosted by EMU.

Placing first in the final rounds in Rhetorical Criticism, Brad Glazier spoke on Adlai Stevenson's speech to the United Nations following the Russian build-up of missiles in Cuba during the early 1960's. He also placed third in impromptu with the topic "I would gladly trade my key to heaven if I could safely go to Hell." "The subject is not what the title suggests," Heydlauff said.

## AMERICAN LEGION

POST 31

## APRIL FOOL'S DANCE SATURDAY, APRIL 1

9 p.m. to ???

Music By  
JIM GAKEN  
and His Band

TICKETS: \$10 per couple

Available at Strieter's Men's Wear, Chelsea Lumber or Larry Gaken at 475-7891

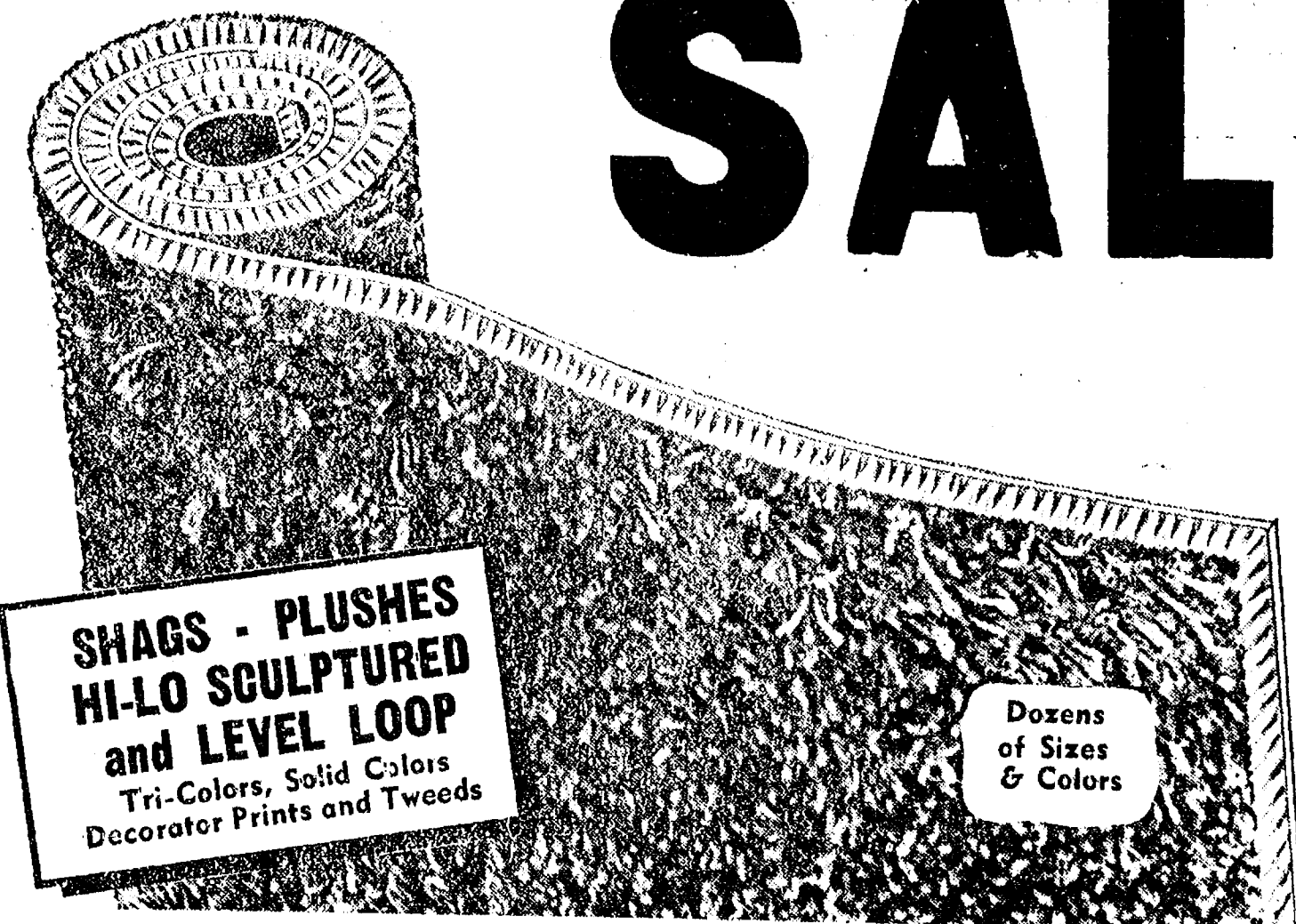
## AMERICAN LEGION HOME

1700 RIDGE RD., CAVANAUGH LAKE

GO **GAMBLES**

Open 8:30 to 5:30 Daily. Friday till 8:30

FAMOUS BRAND  
CARPET REMNANT



SAVE  
UP TO  
1/2

## CHECK THESE GIANT VALUES

	RETAIL PRICE	SALE PRICE
6'x9' 100% Nylon, Foam Back, Decorator Print	\$ 54.00	\$35 <sup>95</sup>
9'x12' 100% Nylon, Jute Back, Shag	\$108.00	\$68 <sup>95</sup>
12'x12' 100% Nylon, Foam Back, Hi-Lo Sculptured	\$144.00	\$91 <sup>50</sup>
12'x15' Nylon Plush, Foam Back, Tri-Color	\$240.00	\$134 <sup>95</sup>

Many More Sizes, Colors and Designs To Choose From!

BRING IN YOUR SIZES & SAVE!

GO **GAMBLES**

110 N. Main St.  
Chelsea  
Ph. 475-7472

## Deepfreeze FOOD FREEZER

made only by **Amana**  
is your best  
freezer buy!



You can cut the  
HIGH COST OF EATING!

Now you can take advantage of sales, quantity discounts, even seasonal food buys. This Deepfreeze Food Freezer keeps frozen food as fresh as the day you froze them, to keep the taste, color and texture just right, until you're ready to use them. You can stock up on the foods you use frequently, you have the space for them. And in the kitchen.

**\$199<sup>00</sup> 7.2 cu. ft.**

Plus delivery

### New idea in freezers, the "Kitchen Freezer"

It's not a space stealer because it's just about the width of a refrigerator and only counter-top height, so you put it where it gives you the most practical use, in the kitchen.

Space giving foam insulation is efficient and gives more insulation than ordinary three inch fiberglass material.

Self-aligning, counterbalanced lid stays open so you have both hands free when putting food in or taking it out and it re-aligns itself, every time you close it.

New embossed steel finish will stay bright and new, looking for years.

9.1 cu. ft. C-9W	11.0 cu. ft. C-11W	15.0 cu. ft. C-15W
19.0 cu. ft. C-19W	23.0 cu. ft. C-23W	28.0 cu. ft. C-28W

Need more  
freezer storage space?  
Look at these  
**Deepfreeze**  
HOME FREEZER

EASY TERMS CAN BE ARRANGED

# HEYDLAUFF'S

113 N. Main St., Chelsea

Ph. 475-1221





## Real Estate

By PAUL FRISINGER

### WHERE'S THE "SCRIVENER"?

Much of the tradition and ceremony has disappeared from the business of transferring real estate. You might enjoy learning how it used to be done in the old days.

The law has always regarded the transfer of real estate as one of the most solemn acts and thus a great deal of formality attended the transfer. In the early days of land tenure, transfer was accomplished by "livery of seizen" which literally, means transfer of possession.

The buyer and seller would go upon the land in question and there, in the presence of witnesses, the seller would take a clod of turf and a twig from a tree and hand it over to the buyer as a symbol or token of the transfer.

The transfer was then made a matter of record by having the "scrivener" (the person in the community who could write) do his thing and write out the transfer on a parchment and affix his seal.

If there is anything we can do to help you in the field of real estate, please phone or drop in at FRISINGER REALTY CO., 935 S. Main St., Chelsea. Phone: 475-8683; evenings 475-2621. We're here to help!

## Library Conference Set April 8 at WCC

Reserve the morning hours of Saturday, April 8 for your contribution to the library services of the future.

In preparation for the White House Conference on Libraries in the fall of 1979, a series of state and local conferences will be held for people in Washtenaw and Livingston counties. The first opportunity for citizen participation will be from 9 a.m. to 1 p.m., April 8 at Washtenaw Community College.

The conference will provide an opportunity for people to come together and talk about libraries:

what they are and what they should be.

Delegates to represent the two-county area at the Michigan Conference in Lansing will be elected at this meeting. In turn, delegates to the White House will be chosen from the state conferences. Delegates to the Michigan Conference will be selected so that twice as many citizens as librarians are involved. It is essential that many different groups, needs, and interests from Chelsea be represented at our area conference.

If you have questions or would like to talk about the conference, call Debra Leabu at McKune Memorial Library, 475-8732.

## Boy Scouts Give 38 Autos Safety Check

A total of 38 cars were given a free automobile safety check

by 12 Boy Scouts (Troop 478) as a community service project held last Saturday.

Despite the cold and freezing rain, "we think the turnout was pretty good," said Bill Burgess, organizer of the project to help earn his Eagle Scout Award. "We were expecting more than 50 cars, but it wasn't a good day for going out," he said.

Each car was examined by three boys who gave the car a good going over for basic problems. Included on the check list were: lighting systems—headlights, tail lights, turn signals, parking lights, and stop lights; wheels and tires; parking brakes; windshield wipers; and steering control.

Out of the 38 cars inspected, 11 were found with minor defects. "Most of the defects had to do with the lighting system," Burgess said, "probably because of bumping into the huge piles of snow around their driveways this winter. Many of the car owners didn't know they had a headlight or taillight out and were glad they came in," he said.

After the inspection, drivers were given a copy of the problems found and were encouraged to have the defect fixed. "It might save someone from having an accident," Burgess commented.

Scouts who have earned their Eagle Scout Award will be honored at a special banquet to be held April 29. The troop's leader is Duane Hall.

Telephone Your Club News To 475-1371.

# THE CHELSEA STANDARD

Second Section

CHELSEA, MICHIGAN, THURSDAY, MARCH 30, 1978

Pages 7-14



**FLOOR HOCKEY TEAM:** Chosen by their classmates as the best, these South school floor hockey team members defeated the Bates elementary school team, 12-6, in Dexter on March 16. In the front row, from left to right, are Jenny Cattell, Kris Matloff, Alison Chasteen, Jeff Stacey, and Robert Murrell; middle row,

from left, are Craig MacIag, Robert England, Mike Merkel, Kristie Headrick, Melanie Gunn, and Chris Tarasow; back row, from left, are Cathy Burkel, Cristie Favers, John Jedele, Kurt Roberts, Dan Degener, Steve Whitesall, and Donna Bruck. Baja Trimble is absent from the picture. Their coach is Bill Wehrwein.

475-2030  
475-8765

115 PARK ST.  
CHELSEA, MICH.

## MAYER AGENCY

(of Springer-Kleinschmidt Agency Inc.)

Your Local Independent Insurance Agency providing dependable protection and prompt claim payment through 10 of the nation's leading insurance companies.

## HOME - AUTO - BUSINESS INSURANCE



Sheridan W. Springer

Ruth DeVine

Charles A. Kleinschmidt

Micky Quackenbush

### Letters to the Editor

Dear Editor:

I am writing about the special groups in North school. Maybe the people in these groups are able to excel in school work, and maybe they even are "special." I don't deny this nor do I mean to criticize the special help they are getting.

I do disagree though with some of the extra activities provided for these students.

What about the other students, are they "dumb"? Maybe they can not comprehend or grasp as much as the other students, but shouldn't they also be helped, I don't mean just with school work but also with extra experiences.

Like field trips, every student enjoys a field trip, special or not. This is not just extra help, just a privilege because they are so called "special."

Field trips, looking through microscopes, extra science experiments, all are something that should be experienced by all. Maybe they just learn how to use something or what something looks like, but still they have learned something, they have experienced something.

Yes, students that excel should have extra help, but not extra fun. And what about the slow learners? Shouldn't they be given just as much extra help?

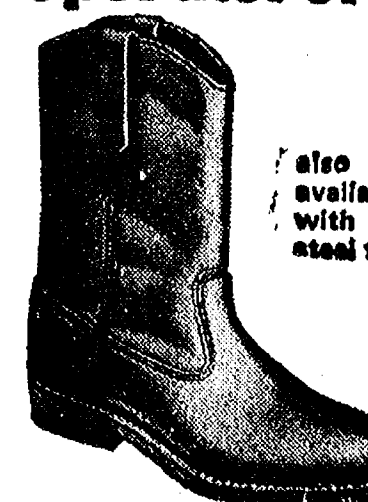
If the slow learners were treated like "special people," as well as the faster learners, the world would be a much better place to live.

Sincerely yours,  
Dan Blough.

### Pop Music Concert Planned for April 6

A pop music concert will be held Thursday, April 6 in the Chelsea High school auditorium at 8 p.m. Playing will be the jazz bands from Beach Middle school and Chelsea High school; and singing will be by the Beach Middle school and Chelsea High school choirs.

### equipment operators!



Here's a man's boot every step of the way! Rugged, handsome, ready for a rough day's work anytime. Easy on the feet, too. Stop by—try on Pecos by Red Wing and be convinced!



VOGEL'S & FOSTER'S

Ph. 475-1606 Chelsea, Mich.



**BRADBURY'S CITED:** The 400-acre dairy farm operation of Jack and Archie Bradbury was awarded the Michigan State University 25-year Telfarm Award during Farmers' Week (March 20-24). The operation was cited for its excellence in management and participation in the Telfarm program that services more than 1,500 Michigan farms. Shown, left to right, are Bill Ames, MSU Co-operative Extension Services agricultural agent in Washtenaw county; Donna and Jack Bradbury.

Tell Them You Read It in The Standard.

## NEW at SCHUMM'S THE LIGHTER MENU

(In addition to Our Regular Menu)

ENTREES:

SCHUMM'S SIZZLER STEAK  
BROILED FISH - Whitefish, Perch, Cod, Sole  
SCHUMM'S BAR-B-Q BROIL  
BATTERED FISH  
SMELT

INCLUDES:

6-7 Oz. Portions - Basket Warm Garlic Toast  
Salad - Choice of Potato

ONLY \$3.99

Served Monday thru Thursday  
Before 6 p.m. (3 to 6) or After 9 p.m. (9 to closing)

Open 11 a.m. to 11 p.m. Mon. thru Thurs.; 11 a.m. to Midnight Fri. & Sat.; 12 Noon to 9 p.m. Sunday

# SCHUMM'S

1620 M-52

PHONE 475-2020

## RICK'S MARKET

20490 M-52

"The Store with the Spartan on the Door"

Phone 475-2898

BORDEN'S  
ICE CREAM  
CAKE ROLL

6-in. Roll

79¢

SPARTAN  
Yellow Popcorn

64-Oz. Bag

93¢

SPARTAN  
SANDWICH  
COOKIES

24-Oz. Pkg.

83¢

HUNGRY JACK  
Mashed Potatoes

8-Oz. Box

55¢

FRITO-LAY  
DORITOS

Reg. 83c Bag

69¢

BORDEN'S OLD FASHION  
ROUND

## ICE CREAM

1/2 gal. \$1.39

## FRIED CHICKEN

32-Oz. Pkg. \$2.39

Spartan New Improved

## BREAD

4 1 1/4-Lb. Loaves \$1.00

## SWEET MIDGETS

16-Oz. Jar \$1.03

## HOME LUNCH BAGS

Pkg. of 100 59¢

## NORTHERN TOILET TISSUE

Single Rolls 20¢

## JELL-O

2 3-Oz. Boxes 35¢

IN THE NEAR FUTURE, RICK'S MARKET ONCE AGAIN  
WILL BE EXPANDING OUR ALREADY LARGE BAKERY LINE

## Rick's Mkt. Pizza Time

HOT - FRESH - DELICIOUS

Taking Orders from 4 p.m. to 9 p.m. Wed. thru Sun.

## RICK'S HOT BREAD DAILY

Weekdays by 3:30 p.m. Sat. & Sun., by 10:30 a.m.

(QUANTITY RIGHTS RESERVED)



Ads  
Taken  
Till 1 p.m.  
Tuesday

# PUT IT IN THE WANT ADS FOR RESULTS

Just  
Phone  
475-1371

## WANT ADS

**The Chelsea Standard**  
WANT AD RATES  
PAID IN ADVANCE—All regular ads. 75 cents for 25 words or less, each insertion. Count each line as a word. For more than 25 words add 1 cent per word for each insertion. "Blind" ads or not numbered add 50 cents per insertion.  
CHARGE RATES—Same as cash in advance, with 25 cents bookkeeping charge if not paid before 1 p.m. Tuesday. Preceding publication. Pay in advance. Send cash or money order.  
DISPLAY WANT ADS—Rate, \$1.50 per column inch, single column width, only, 6-point and 12-point light type only. No borders or boldface type. Minimum 4 inch.  
CARTON OF THANKS OR MEMORIALS—Single paragraph style, \$1.50 per insertion for 50 words or less; 5 cents per word beyond 50 words.  
COPY DEADLINE—1 p.m. Tuesday. Week of Publication.  
ERRORS—Advertisers should check their ads the first publication. This newspaper will not be liable for failure to publish an ad or any typographical errors in publication except to the extent of the cost of the ad for the first week's insertion. Adjustment for errors is limited to the cost of correction of the ad wherein the error occurred.  
NEEDED—Someone to board my 2 dogs until my new home is built. Prefer someone on farm. Terms negotiable. Ph. 421-6783, evening, or 353-5000 days. x32tf

C—Custom Built Homes  
O—hi We Remodel too  
U—can count on us  
N—e Job Too Small  
T—rim Inside & Out  
K—ough-in Only If  
Y—ou Want to Finish  
S—iding Aluminum, 5" Gutters  
I—mmediate Attention  
D—ALE COOK & CO.  
E—stimates, Free

Please Call  
475-9153  
**DALE COOK**

**Fireplace Builder**  
Field stone mason, block and brick mason, tuck pointing.  
FREE ESTIMATES  
Call 475-8025 after 3 p.m.

**Patrick Grammatico**

**BODY SHOP**  
COMPLETE FULL TIME  
Estimates Available  
**PALMER FORD**  
222 S. Main 475-1301  
40tf

**McDONALD'S**  
has full- and part-time positions available for day and evening shifts. Flexible schedules, free meals and uniforms. \$2.65 per hour to start. Apply in person, 373 N. Zeeb Rd. x44

## WANT ADS

**R. L. BAUER Builders**  
LICENSED and INSURED  
Custom Building  
Houses • Garages  
Pole Barns  
Roofing • Siding  
Concrete Work  
FREE ESTIMATES  
Call 475-1218

**SIGNS**  
—FOR SALE  
—EXIT  
—NO SMOKING  
—FOR RENT  
—KEEP OUT  
—NO HUNTING  
—NO SWIMMING

The Chelsea Standard  
300 N. Main St.  
Chelsea, 475-1371 40tf

**THORNTON**  
475-8628

\$44,900—Easily maintained 4-bed room ranch with aluminum exterior. Family room, private study. Great country living, with new pole barn. On 1.7 acres.  
OWNERS ANXIOUS! Newly painted and remodeled older home in the Village of Chelsea. New carpeting, 3 bedrooms. Garage. \$43,900.  
BRICK RANCH on 10 acres bordering state land. Excellent condition and offering oak cabinets in kitchen, rec. room, formal dining, and 4 bedrooms. \$79,500.  
DELUXE DUPLEX on one acre in the country. Presently renting for \$400 per mo. Great for owner-occupant set-up. Call for details.  
BUILDING SITE — 10 acres with pine trees. Already parked. Land contract possible. Chelsea schools. \$12,500.  
ACCESS TO JOSLIN LAKE—Lake lot with large trees. Located on private drive. \$4,500.

**ROBERT H. THORNTON JR., P.O. REALTOR**  
EVENINGS:  
Barb Rybak ..... 475-8498  
Lang Ramsay ..... 475-8138  
Mark McKernan ..... 475-8424  
George Knickerbocker ..... 475-2646  
Pat Youtter ..... 475-2221  
Chuck Walters ..... 475-2808  
Helen Lancaster ..... 475-1198  
42tf

**2-Acre Parcel**  
LOVELY, private, with small pond. Perk approved. \$12,500. Terms available. Ph. 475-9569. 45  
CUSTOM SEWING and alterations. Ph. 475-2249. 38tf

**McCulloch**  
Portable Generators  
Chain Saws  
WE SELL, SERVICE,  
SHARPEN AND TRADE.  
Chelsea Hardware

## WANT ADS

FOR RENT—Fair Service Center for meetings, parties, wedding receptions, etc. Weekdays or week-ends. Contact John Wellnitz, phone 475-1519. x31tf

**HEATING SPECIALISTS**  
**HILLTOP INC.**  
8316 Workner Rd., Chelsea.  
**PARTS**  
A hard to find item? Call us.  
**NEW INSTALLATION**  
Want the best? Call us.  
**SERVICE**  
Furnace out? Call us.  
475-2949  
"Serving the area for over 20 years" x26tf

**SAND GRAVEL**  
**KLINK EXCAVATING**  
Backhoe  
Road Work • Basements  
Trucking • Crane Work  
Top Soil • Demolition  
Drainfield • Septic Tank  
Trenching, 5" up  
Industrial, Residential, Commercial  
CALL 475-7831 13tf

FOR SALE—10 acres, gentle sloping land with 100's pine trees overlooking a small swamp with stream through and surrounded by state land. This beautiful building site, 7 miles north of Chelsea has been perked, health approved and has zoning approval. Ready for building. Ph. 229-5737 week-days, after 6 p.m. x43

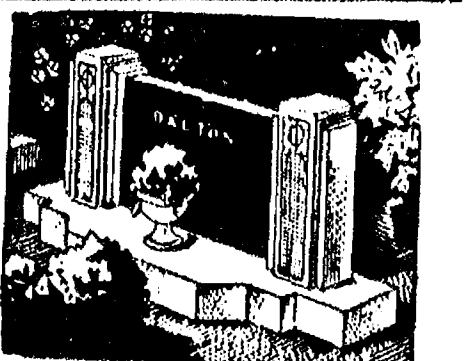
## A-1 USED CARS AND TRUCKS

'77 CHEV 1/2-ton pick-up  
'77 LTD 4-dr.  
'76 PINTO 4-dr.  
'76 RANCHERO GT pick-up  
'75 PINTO Runabout  
'75 FORD 1/2-ton Super Cab  
'74 MUSTANG  
'74 PINTO 2-dr.  
'74 PINTO wagon  
'74 PINTO Squire wagon  
'74 OLDS Cutlass 2-dr.  
'73 TORINO wagon  
'73 VW Beetle  
'73 MONTEGO 2-dr.

**PALMER FORD**  
65 Years in Chelsea  
Since April 15, 1912  
Chelsea 475-1301 x42tf  
BUILDING SITE — 3.37 acres on Cavanaugh Lake Rd. Rolling and close to State Land. Call for an appointment to discuss its possibilities. PIERSON & RIEMEN SCHNEIDER REALTORS 475-9101. Eves: 475-1824 or 475-1469. 42

## ED COY REALTY

426-3948  
Member Ann Arbor Board of Realtors  
Ed Coy ..... 426-8235  
Rae Kozlowski ..... 426-8874  
List your home with us x10tf  
LAND CONTRACTS & MORTGAGES wanted—Land contracts purchased, any amount, anywhere in Michigan. Lowest discounts. Can also make real estate mortgages. Call Dan Duncanson anytime, Ann Arbor Real Estate Co., 668-8595. 27tf



**BECKER MEMORIALS**  
MAUSOLEUMS • MONUMENTS  
BRONZE TABLETS • MARKERS  
4031 Jackson Road  
ANN ARBOR, MICHIGAN

## WANT ADS

**Complete Body Repair Service**  
Bumping — Painting  
Windshield and Side Glass Replacement  
Free Pick-up and Delivery  
Open Monday Until 8  
CONTACT DON KNOLL  
FOR FREE ESTIMATE

**Village Motor Sales, Inc.**  
CHRYSLER — DODGE  
PLYMOUTH — DODGE TRUCKS  
Phone 475-8681  
1185 Manchester Rd., Chelsea  
Hours: 8 a.m. to 5:30 p.m.  
9 a.m. to 1 p.m. Saturday  
Tues. thru Fri. Until 8 Monday x14tf

**LEONARD REITH**  
Master Plumber  
Licensed Electrician  
Hot Water Heat  
18238 N. Territorial Rd.  
Chelsea, Mich. 48118  
Phone: 475-2044

FOR RENT:  
**Music Machines**  
Juke Boxes  
for Parties,  
Receptions or  
Any Special Gathering.  
CALL  
**Zemke**  
Operated Machines  
Days 662-1771 x38tf

## RON MONTANGE CONSTRUCTION

—Full carpentry services (rough & finish)  
—Additions & remodeling  
—Garages  
—Repairs  
—Roofing and Siding  
—Cabinets & formica work  
—Farm Buildings  
—Excavating & trenching  
QUALITY WORKMANSHIP  
FREE ESTIMATES  
Ph. 475-1080 10tf

## J. R. CARRUTHERS

LICENSED  
RESIDENTIAL BUILDER  
CUSTOM HOMES  
ADDITIONS/FIREPLACES  
FATIO  
ROOFING/SIDING/REPAIRS  
475-7234  
CHELSEA 30tf

## Land Contracts and Mortgages Wanted

LAND CONTRACTS purchased, any amount, anywhere in Michigan. Lowest discounts. Can also make real estate mortgages. Call Dan Duncanson anytime, Ann Arbor Real Estate Co., 668-8595. 7tf  
GARAGE SALE—3 family, Saturday, April 1, 10 to 4, 8-speed bike, hot water heater, record player, patio table, toys, clothes, and much more. 7534 3rd St., Detroit. x42

## WANT ADS

CORRECTIVE HORSESHOEING and trimming. Mike Brishols. Ph. 581-9036. x45tf

**VACUUM CLEANERS**  
Authorized Electrolux sales and service.  
**James Cox**  
428-8444, or 428-8688  
118 Riverside Dr., Manchester 48tf

**ATTIC INSULATION**  
Class I  
Cellulose Insulation  
installed by trained installers  
**FOAM**  
WALL INSULATION  
Highest thermal efficiency of any insulation type.  
New and Existing Construction.

**FOAM MASTERS**  
Complete insulation contractor  
Licensed and Insured.  
475-1625  
Free Estimates x31tf

**Automotive Rust Proofing Cars and Trucks**  
**Village Motor Sales, Inc.**  
CHRYSLER — DODGE  
PLYMOUTH — DODGE TRUCKS  
Phone 475-8681  
1185 Manchester Rd., Chelsea  
Hours: 8 a.m. to 5:30 p.m.  
Tues. thru Fri. Until 8 Monday  
9 a.m. to 1 p.m. Saturday 21tf

**Help Wanted**  
Qualified personnel needed in inspection and tool making departments.  
**W. A. Thomas Co.**  
1035 N. Fletcher Rd. Ph. 475-8626  
An equal opportunity employer. x35tf

**QUASAR TELEVISION Sales & Service**  
Service on most major brands. Also, antenna installation and antenna supplies.  
**PORTER'S TV**  
212 Buchanan St., Chelsea  
Ph. 475-8380 4

**KITTENS**  
Darling black and white females. Beautiful markings, 6 weeks old. Free to good homes. Ph. 475-9569. x45  
HOST dry cleans new life into any carpet—shag, kitchen, or indoor-outdoor. It's easy. Rent the HOST machine. Mervel Home Furnishings, Chelsea, 475-8621. x42  
TREE REMOVAL, trimming, topping. Free estimates. Ph. 426-4110. x43  
RENOVATION—Painting, drywalling, carpet laying, roofing, plastering, finish carpentry. Quality work done at a reasonable price. Loy's Renovation, Ph. 449-2131 or 971-7883. x43

## — YOUNG —

We list and sell lake, country and town properties. Eugene Young, Real Estate & Builder, 878-7022, 11598 Dexter-Pleakney Rd., Pleasanton 48169. x34tf  
PIANO TUNING and repair. Qualified technician. Call Ron Harris, 475-7134. -10tf

**CASH FOR LAND CONTRACTS**  
Any type of real estate throughout Michigan. No commissions or costs. First National Accept. Call Free 1-800-292-1550

## WANT ADS

CARPENTER WORK — Inside or out. Mr. Coburn, 475-2893. 10tf  
HELP WANTED — Experienced cosmetologist with references, in Stockbridge area. Ph. (517) 851-7213. x25tf

**STEP UP TO KOZMA CONSTRUCTION**  
And Step Down In Price  
LICENSED BUILDER  
FREE ESTIMATES  
COMPLETE CONSTRUCTION SERVICES  
CALL  
**LEN KOZMA**  
475-7452 29tf

FOR SALE — Fantastic building site, 9 terraced acres with spring-fed pond on Madden Rd. in Dexter school district. Call Midwest Brokers, 994-0700. x25tf  
ROOMS by day, week or month. Excellent for the single man or retiree. Sylvan Hotel, Chelsea, Ph. 475-2911. x31tf  
ROOFING SPECIALIST—All types of roof repairs, homes, bars, commercial. Insurance repairs. Asphalt shingles, hot built-up roofing, cedar-slate tile-asbestos. Awnings and porch enclosures. Siding and storm windows. Call Joe Hayes for free estimates. Manchester, 428-8520. x39tf  
SEAMLESS ALUMINUM eaves, troughs, roofing, siding, and carpentry work of all kinds. Experienced installers. All work guaranteed. For free estimate, call R. D. Kleinschmidt Co., 428-8836. x31tf

PRICE REDUCED to \$49,900 on immaculate 3-bedroom, 1,600 sq. ft. ranch. Situated on 5 acres with mature shade this home includes family room with fireplace and 2-car garage. 16 additional acres available on land contract terms. Owner anxious. Call Robert Osterlie, (517) 655-2388, Martin Associates, (517) 351-2200. x42

**LOST**  
BLACK LABRADOR, male, in Blind Lake-Half Moon Lake area. Dear family pet. Please call with any information. \$50 reward for return. Ph. 475-9569. x45  
**Brand New Home for Sale**  
2 miles from Chelsea, on 2 acres. Nice area, full basement, 2 full glamour baths, 2-car garage, large kitchen and dining room with bar, fireplace. Built and insulated to save you a bundle.  
\$58,900  
**WEBER HOMES**  
Ph. 475-2828  
evenings, 475-2851 x42

FOR SALE—1969 Ford 1/2-ton, farm and ranch special, 360 V-8, 3-speed standard trans., 2 new mounted snow tires on rear. Very dependable vehicle. \$750. Ph. 229-5737 week-days, after 6 p.m. x43  
FOR SALE—1975 Chrysler Cordoba. This auto is in excellent condition and is loaded with everything except electronic windows and seats. Plus 4 brand new steel belted radials. \$3995. Ph. 229-5737 week-days, after 6 p.m. x43

## SCHNEIDER'S GROCERY

CHOICE MEATS • FINE FOODS  
12-OZ. CANS  
**Coke, Tab**  
..... 8 pac \$1.49  
TRISCUIT, WHEAT THINS, BACON THINS, CHIPPERS, CHICKEN-IN-A-BISKIT  
**Nabisco Snack Crackers** ..... 59c  
12-OZ. CAN BIRDEYE FROZEN ORANGE DRINK  
**Awake** ..... 2 for 85c  
ECKRICH  
**Kielbasa** ... lb. \$1.39  
READY-TO-BAKE  
**Ham Loaf** ... lb. \$1.49  
121 S. MAIN ST.  
PHONE 475-7600

## WANT ADS

FOR RENT — 1977 Ford 12-Pass. Club Wagon Buses and Econoline Vans by the day, week-end, week or month. Insurance. Palmer Ford, 222 S. Main, 475-1301 for rates. 33tf

**CUSTOM BUILDING**  
LICENSED & INSURED  
FREE ESTIMATES  
**TOTAL CONSTRUCTION SERVICES**  
—Homes, factories, warehouses  
—Pole buildings  
—Garages  
—Remodeling - Additions  
—Aluminum Siding  
—Roofing  
—Masonry Work, fireplaces, block work, patios, etc.

**SLOCUM CONTRACTORS & BUILDERS**  
Serving Washtenaw County  
For Over 20 years  
20700 OLD US-12  
CHELSEA  
Phone 475-9321 or 475-7611 24

**WEDDING STATIONERY** — Protective brides are invited to see our complete line of invitations and wedding accessories. The Chelsea Standard, 300 N. Main. Ph. 475-1371. 8tf

WANTED—Plow ground and standing hay. Ph. 475-2771. 37tf  
TRAVEL TRAILERS — 13-ft. and up; 10x55 ft. trailers. John R. Jones Trailer Sales, Gregory, Mich. Phone 498-2655. 43tf  
SEE US for transit mixed concrete. Klumpp Bros. Gravel Co. Phone Chelsea 475-2530, 4920 Loveland Rd., Grass Lake, Mich. x40tf

FOR SALE—10- and 12-acre building sites, Chelsea schools, north of Chelsea, nice area. Low down payment, low monthly payments. Ph. 475-2419. 34tf  
FOR SALE — 1973 Speedway snowmobile, 295 Kohler engine. Ph. 475-9604. x27tf  
WILL BABYSIT in my home — South school area, days. Ph. 475-8544. 25tf

JAR RENTAL by the day, week-end, week or month. Full insurance coverage, low rates. Call Lyle Christwell at Palmer Motor Sales. 475-1301 25tf  
PART-TIME HELP WANTED — Rubbermaid Co. needs demonstrators. Earn good money. No collecting. No delivery. No exchanges. Also, dating parties. Call 971-7086. x6  
FOR SALE—1969 Ford 1/2-ton, farm and ranch special, 360 V-8, 3-speed standard trans., 2 new mounted snow tires on rear. Very dependable vehicle. \$750. Ph. 229-5737 week-days, after 6 p.m. x43

FOR SALE—1975 Chrysler Cordoba. This auto is in excellent condition and is loaded with everything except electronic windows and seats. Plus 4 brand new steel belted radials. \$3995. Ph. 229-5737 week-days, after 6 p.m. x43

## WANT ADS

FOR SALE — Beautiful antique oak sewing machine, in good working condition. \$75. Ph. 663-8228. x14

**PATCHING and PLASTERING**  
Call 475-7489. 33tf  
**CAR & TRUCK LEASING** — For details see Lyle Christwell at Palmer Motor Sales, 475-1301. 40

**MICHIGAN CERTIFIED FEED**  
Oats, \$3 bushel; soy beans, treated, \$3.90 bushel. Erabe Farms, Britton, Mich. 49228. Ph. (517) 481-4010 or (517) 423-5983. x39

**Clearance Sale New '77 Cars & Trucks In Stock**  
'77 DODGE B-200 van conversion V-8, auto, p.s., p.b., AM-FM stereo 8-track, carpeted thru out, captain's chairs. SAV  
**DEMO**  
'78 LE BARON Medallion 4-dr. 318, auto, p.s., p.b., leather interior, air, etc. .... SAV  
'78 VOLARE coupe, 225, auto, p.b., bucket seats, stereo SAV  
**Driver Training Car**  
'78 VOLARE Premier 4-dr., 225, auto, p.s., p.b., 60-40 seat. SAV  
'78 ASPEN SE 4-dr., 225, auto, p.s., p.b., air, 60-40 seat. SAV

**Used Trucks**  
'76 DODGE D-200 Club Cab, V-8, auto, p.s., p.b. .... \$299  
'76 CHEVY Van, 350, auto, p.b., camper conversion. Radial tires. .... \$411  
'75 PLYMOUTH Voyager Sport V-8, auto, p.s., p.b., air cond. .... \$449  
'75 PLYMOUTH Voyager, 318, auto, p.s., p.b., low mileage. .... \$399  
'67 FORD 1/2-ton pick-up, 6-cyl., speed. .... \$

**Quality Used Cars**  
'76 FORD Pinto 2-dr., 4-speed, mileage. .... \$  
'76 VOLARE Premier 4-dr., auto, p.s., p.b., air, AM-FM radial tires, low mileage. \$  
'72 CHEVY Bel Air 4-dr., auto, p.s. .... \$  
'67 BARRACUDA 2-dr., V-8, auto, p.s. .... \$

**Village Motor Sales, Inc.**  
CHRYSLER — DODGE  
PLYMOUTH — DODGE TRUCKS  
Phone 475-8681  
1185 Manchester Rd., Chelsea  
Hours: 8 a.m. to 5:30 p.m.  
Tues. thru Fri. Until 8 Monday

**WARNING**  
Dari  
Pagliarini  
is on the road.  
HELP WANTED — Grill cook needed for 2nd and 3rd shifts. Apply in person, 8 a.m. to 8 p.m. Union 76 Truck Plaza, 1-94 Baker Rd., Dexter exit.

**Your Approval**  
In the connections of our business.  
**Staffan Funeral Home**  
"Funeral Directors for Four Generations"  
124 PARK STREET  
PHONE 475-1444

**BECKER MEMORIALS**  
MAUSOLEUMS • MONUMENTS  
BRONZE TABLETS • MARKERS  
4031 Jackson Road  
ANN ARBOR, MICHIGAN

**Land Contracts and Mortgages Wanted**  
LAND CONTRACTS purchased, any amount, anywhere in Michigan. Lowest discounts. Can also make real estate mortgages. Call Dan Duncanson anytime, Ann Arbor Real Estate Co., 668-8595. 7tf  
GARAGE SALE—3 family, Saturday, April 1, 10 to 4, 8-speed bike, hot water heater, record player, patio table, toys, clothes, and much more. 7534 3rd St., Detroit. x42

**SCHNEIDER'S GROCERY**  
CHOICE MEATS • FINE FOODS  
12-OZ. CANS  
**Fresca, Sprite**  
..... 8 pac \$1.49  
11 1/4-OZ. FROZEN SARA LEE PECAN  
**Coffee Cake** ... \$1.19  
7 1/2-OZ. BAG LAY'S 8 1/2" SIZE  
**Doritos** ..... 59c  
ECKRICH  
**Smoked Sausage**  
..... lb. \$1.39  
10-LB. BAG  
**Idaho Potatoes** \$1.29  
Your Store for  
Alexander & Hornung's  
Smoked Meats  
We Accept  
U.S.D.A.  
Food Coupons



# LITTLE WANT ADS! BIG PLUSES FOR BIG RESULTS!

**JUST PHONE  
475-1371**

## WANT ADS

**ENGRAVING BUSINESS FOR SALE** — \$4,500 with 1976 new Hermes Super GTX machine, 9 sets of type, metal cutter, desks, entire stock including trophies and parts. Inquiries, charms, etc. Ph. 667-5380. x381f

Headquarters for **RED WING WORK SHOES** Vogel's and Foster's 401f

Blanchard & Associates, Inc. 1946 Packard Rd., Ann Arbor 769-9492

**REQUEST** we offer this terrific 3-bedroom older home in a popular price range NW of Chelsea. Home includes hardwood floors, cedar closets, fireplace, entry kitchen, double lot, plus cement and garage. Priced at \$5,500! Call 662-7731 or 475-2521.

## SCHUMM'S

now accepting applications for — **WAITRESSES** — **BARTENDERS** — **COOKS**

Willing to train. Please call Jim for appointment. 475-2020

**FOR SALE**—Model TFD Wisconsin engine, re-built, never used, \$80. 246 Allis-Chalmers WC, \$600. Ph. 75-1909 after 6 p.m. x43

**FOR SALE?** Apartment for rent? The Chelsea Standard has sign for most every need. 300 Main St., Chelsea, Ph. 475-401f

**Energy Control Insulation, Inc.** 3921 Varsity Dr., Ann Arbor Tired of high heating cost? Save 40%

Apco-Foam over 35 years and more than 2 1/2 million homes insulated. Approved, guaranteed for life of structure. Only trained and licensed installers. Use Reduction by 70-80%. Mold-Resistant. Insect-Resistant. Allergic. Apco-Foam tested by 40 independent agencies. For more information Call Jerry Days 973-2245 Evenings 475-1818

**SALE**—24-in. ladies 10-speed \$80. Magic Chef stove, top \$100. Mediterranean style room set, \$300. Ph. 229-5737, days, after 6 p.m. x44

## CUSTOM

**PUMPING and PAINTING** FREE ESTIMATES — ALL MAKES Get the Best for Less! **RANK GROHS CHEVROLET** Phone 426-4677 Dexter, Mich.

Have A Share in Your Child's Education. **DRIVE A SCHOOL BUS** a.m. and p.m. Substitute Drivers Needed **Chelsea Public Schools** Phone 475-7647 or 475-9131

## WANT ADS

**FOR SALE** — 10-acre parcels near Chrysler Proving Grounds. Ph. 475-8234. x41f

**Have You Been Thinking of Selling?** Then call us about listing at 3 1/2 %

or don't complain about high real estate commissions.

**NAME YOUR TERMS**, the price is \$13,900. 10 acres plus a beautiful vacant land ready to build on.

**Gallatin Realty Co.** 994-1202

**DRY WALL TAPING** — Finishing and texturing. New, remodel or repair work. Dick Greene, Ph. 434-1007, Ypsilanti.

**SPORTSMAN'S SPECIAL** — Pheasant, ducks, rabbits and deer plus stream as a boundary for four acres. Enjoy breakfast while you gaze out patio doors at the wildlife. Fenced-in area for dog or a couple horses. Small 2-bedroom home, basement and attached garage, near Stockbridge. \$31,000.

**CAVANAGH LAKE** — 2-bedroom home, fully insulated, enclosed porch with superb view of lake. New drainfield. Two lots with mature maple trees. Chelsea schools. \$30,000.

**SPACIOUS RANCH-STYLE DUPLEX** — Only three years old, (1,738 sq. ft.). Each attractive unit has 2 bedrooms, own utility room, large kitchen, living room and bath. Natural gas, village water and sewers. Excellent return on investment. On 1/2 acre lot. Village of Stockbridge. \$39,900.

**SPARKLING CLEAN** Country Ranch — 3 bedrooms, large newly carpeted living room. Bright cheerful kitchen. 1 1/2 baths, 12x20 ft. master bedroom. New 24x36 ft. detached garage. On one acre in Munith-Stockbridge school systems. \$42,500.

**TWO ROLLING SUNNY ACRES**, surveyed, peaceful country road. Grass Lake schools. \$8,000.

**5 ACRES**, open land with slight roll, new 4" casing well. Two minutes from Chelsea. \$16,500.

**6 ACRES**, secluded, near Gregory. Hill, nice woods, and two live springs (could be ponded). 4" casing well with submersible pump, approved septic system and electric on property. \$16,500.

**10 ACRES** in Waterloo Recreation Area. Very rolling open hills with woods in rear. Can be divided. North of Big Portage Lake (Jackson county). \$17,000. Land contract possible.

**22-ACRE RESORT** with 550 ft. lakefront, woods, and areas for sports. 12 rustic cabins, kitchen-dining facility, arts and crafts center, office with fireplace, bathhouse and laundry, huge (4,000 sq. ft.) recreation hall with massive fireplace and large stage. Ideal hideaway for small private groups, or operated as overnight campground. Many other possibilities. Call us now for an appointment to see this beautiful property in the Waterloo Recreation Area. \$250,000.

## WATERLOO REALTY

355 Clear Lake **JOANN WARYWODA, BROKER** Phone 475-8674

Evenings and Sundays: Jerry Gondek ..... 475-8285 Paul Erickson ..... 475-7322 Sue Lewie ..... 1-517-522-5252 Carol Lakatos ..... 475-7129 x41f

**SMITH - DOUGLASS** Washtenaw Crop Service Center is taking applications for part-time warehouse help at 885 Parker Rd., Ann Arbor, Mich. Must be at least 18 years old. Phone 428-8851 for an appointment. We are an equal opportunity employer. x42

**IRISH SETTER** — Good hunter, good with children, 14 mos. old. Ph. 985-2537. x42

## WANT ADS

**Window Screens Repaired** Reasonable rates.

**Chelsea Hardware** 110 S. Main Ph. 475-1121 301f

**FOR SALE** — 1974 Ford pickup and camper. V-8, auto, 350, 94-ton, p.s., p.b., radio, slide rear window, 64-in. slip-on Cricket camper, sleeps 8, carpeted, completely self-contained. \$4,000. Ph. 426-3987 or 437-6964 after 6 p.m. x42

**SLEEPING ROOM FOR RENT** — Gentlemen preferred. Ph. 426-2557. x42

**CB, RADIO, STEREO and PHONOGRAPH REPAIR** Second Class License **THE MUSIC HUTCH** 8407 Main St., Dexter 428-4380 x261f

**FOR SALE**—1977 Impala, 305 V-8, 4-dr., cruise, power, \$4,875. Ph. (517) 522-8283, week-ends. x43

**Basic Skills Instruction** Reading, Writing & Math all ages.

**Mrs. Sandra Peterson** 475-2718

Certified teacher, M.A. in Reading "Teaching Tailored to Your Needs" x42

**SNOWMOBILE STORAGE** — \$15 per snowmobile, per season to store your sled. Ph. 475-7448. x43

**FAIR KITCHEN, OPERATION** open for bids. Aug. 22-26. Ph. 475-8103 or 475-9014 for information. x42

## FRISINGER

**NEW LISTING** — 4-bedroom brick home, study, nice corner lot, close to elementary school. \$69,900.

**\$155,000** — 150-acre farm, excellent location, 5-bedroom home, Manchester schools, barn and out-buildings.

**\$29,500** — Village of Grass Lake, 3-bedroom home, close to shopping.

**\$34,500** — 2-bedroom home, private access to Half Moon Lake, Chelsea schools.

**\$29,500** — 3-bedroom home, close to shopping, new furnace, new roof.

**\$34,900** — 2-bedroom waterfront Patterson Lake, Pinckney schools.

**\$54,900** — 3-bedroom remodeled home, year-round waterfront, Patterson Lake, Pinckney schools.

**30 ACRES** — \$79,900. Napoleon schools, 11 miles west of Manchester, 4 bedrooms, family room, dining room, 2-car garage, 16'x32' in-ground pool.

**FRISINGER REALTORS** Chelsea 475-8681

Eves: Bob Koch ..... 426-4754 Toby Peterson ..... 475-2718 Herman Koenig ..... 475-2613 Paul Erickson ..... 475-7322 Paul Frisinger ..... 475-2621 x421f

## USED CARS

1973 BUICK Electra 225, 4-dr., V-8, auto., p.s., p.b., air conditioning, power windows, power seat. One owner. Only \$1795

**TRANSPORTATION SPECIALS**

1973 MERCURY Montego 4-dr.

1973 BUICK Century 4-dr.

1971 PLYMOUTH Duster 2-dr.

1970 BUICK Electra 4-dr.

1969 FORD LTD 4-dr.

**NEW HOURS** Mon., Tues., Fri., 8:00-5:30 Thurs., 8:00-9:00 Sat., 9:00-1:00

**SPRAGUE Buick-Olds-Opel, Inc.** 1500 S. Main St., Chelsea Ph. 475-3664 x421f

## WANT ADS

**FOR SALE** — Sunflower seeds for birds. 25-lb. bag, \$4. 50-lb. bag, \$7.50. Ph. 426-8404. x42

**RUSSELL'S HOBBY CENTER** White Ware Painted and unpainted. No firing needed.

**FREE CLASSES** Macrame supplies Also model cars, trucks and planes

**100 W. Main Stockbridge** 1-(517) 851-7210

**FOR SALE** — 1973 Honda Civic. Excellent condition. Ph. 517-522-4798 mornings. x42

**FOR RENT** — Sleeping room. Linens furnished. \$85 month. Ph. 475-9630. x42

**FOR SALE** — 72 Thunderbird. Full factory power. Good condition. Ph. 475-8762. x42

**COUNTRY LIVING** in Unadilla. 20 min. from Ann Arbor. All new 2-bedroom apt. with appliances, carpeting and drapes included. Adult only, no pets. \$295 includes all utilities. Security deposit required. Mrs. A. Lytle, 13329 Unadilla Rd., Gregory. x42

**BAKE SALE** — April 1, 9 to 12 p.m. In front of Vogel's and Foster's. For American Cancer Society. x42

**ANN ARBOR** — The Michigan Antiques Show & Sale, March 31, April 1 & 2, U. of M. Crisler Arena, Main & Stadium, Exit 175 of I-94, 44 Select Dealers, 11 a.m.-10 p.m. Sunday, 11-5. x42

**HANDYMAN** — Repairs of all kinds, roofing. Call for free estimate. Ask for Joe. Ph. 426-4057. x411f

## LOST DOG

**WALKER HOUND**, brown and white, female, near Waterloo area. Reward. Family pet.

Ph. 475-7720

## HOUSE FOR SALE

Open Sunday, 2 to 5 p.m. 19816 Ivey Rd.

**COUNTRY LIVING** at its very best. You will find it in this superb custom built 2,700 sq. ft. all-brick ranch. 4 bedrooms, study, 1st floor laundry, 3 full baths, and 3-car attached garage. All of this plus 10 acres of rolling land which backs up to state land. Do not miss this. \$115,000. 1-84 to Chelsea, M-52 north to Werken, left to Ivey Rd. Host: Pete Peterson, 971-6070, or 434-0548 evenings.

**Caldwell & Reinhart Co. Realtors** 42

**EXPERIENCED, DEPENDABLE** 17-year-old will babysit after school and week-ends. Prefer ages 3 and up. Call Robin at 475-7851. x43

**KENWOOD KW-50** stereo, Garrard AT-60 turntable, \$145.00. Counter-top stove, 20 by 32 inches, harvest gold, 2 large burners, \$35. Ph. 475-9629. x42

**LOST** bright carpet colors... restore them with Blue Lustre. Rent electric shampooer, \$2. Chelsea Hardware. x42

**FOR SALE** — Black walnut meats, by pint or quart. Ph. 428-8866 after April 1. Herb Jacob. x44

**FOR SALE** — Small farm with large two-story house situated on 31 acres of good farm land near Manchester. Partially restored, insulated, big old-fashioned front porch, 40'x60' pole barn. Call Denton Realty, Ph. (517) 787-8300 or Mike Whitney (517) 784-7645. x42

**CAMPER** — 13 ft. Wild Cat. Hunter's Special. Heater, gas, electric, and water tank. \$695. Ph. 426-8241 any time. x43

**FOR RENT** in Stockbridge. 2-bedroom upstairs apartment, full bath, quiet. Newly remodeled. No children. \$200. Reply to Box MA-30, care of The Chelsea Standard. x42

**FOR SALE** — Usher in spring in a new home on Clear Lake. You'll enjoy the tree-shaded lot, 120 feet of lake frontage, a finished basement, and a 2-car garage plus car port. Call for an appointment to see it. **PIERSON & RIEMEN-SCHNEIDER, REALTORS.** 475-9101. Eves: 475-1469 or 475-1824. x42

**Residential - Commercial REMODELING** FREE ESTIMATES **lb V. JENSEN and SON** LICENSED BUILDER

378 Spring Lake Drive Chelsea, Mich. Phone 475-1820

## WANT ADS

**REGISTERED MORGANS** — 11-yr-old brood mare for lease or sale. 6-yr-old show mare for sale. Experienced rider. Also young fillies for sale. Ph. 475-7894 after 6 p.m. and week-ends. James W. Mair, 2175 Lima Center Rd., Chelsea. x42

**CARPENTER** — Rough or finish. No job too small. Free estimates. Ph. 475-1898. x45

**1973 MERCURY MONTEGO** — Brougham, 8 cylinders, power steering and brakes. Very good condition. \$2,000 cash. Ph. 475-7315. See after 5 p.m. x42

**RIDE WANTED** — Week day mornings from 6:30 a.m. to 7 a.m. to the CAP, Inc., factory on 69 Enterprise Dr., Ann Arbor. I wear crutches but am able to get in and out of the car. Please call. Ph. 475-8535. x42

**BAKE SALE** — April 1, 9 to 12 p.m. In front of Vogel's and Foster's. For American Cancer Society. x42

**FOR SALE** — 1972 Matador. Good condition. \$500 or best offer. Ph. 475-7368 after 4:30 p.m. x43

**FOR SALE** — 1970 Dodge Challenger. 340 4 barrel automatic, with lots of extras. Ph. 475-7680 after 4:30 p.m. x43

**FOR SALE** — Wedding gown, size 12. Hand-made, never worn, \$85. Material for three attendant's dresses. \$80. Ph. 475-7703. x42

**WANTED** — Large house to rent. Will do repairs if needed. Have excellent references. Need by June 1. Ph. (517) 565-3022. x43

**WANTED** — Individual will pay top cash for original older model, rust free, low mileage, clean automobile. Any make. 475-7500. x43

**SALESPERSON** — Do you enjoy buying from a catalog? Countless others do too. Come join our sales force of talented women now. Transportation a must. Call for interview. Ph. 761-2112 or 1-522-4378. x44

**FOR SALE** — Washer and dryer, working condition, \$50. Double bed and frame, \$50. Twin bed frames, \$5 each. Ph. 475-2614. x43

**1973 PLYMOUTH** 4-dr. hardtop, fully equipped, excellent condition. Ph. 426-8589. x42

**HOUSE OR OFFICE CLEANING** — Ph. 426-4132. x42

**FOR SALE** — Practically new Super Electrolux vacuum, Douglas 15's western chromes, Gibson Les Paul guitar, early 80's, Sears 100 percent solid state TV, 20" long fish tank, all A.C.S. Ph. 426-8214 after 4. Ask for James. x42

**FREE TO GOOD HOME** — Chesapeake Bay retriever, female, 4 years old. Ph. 426-3260. x42

**FOR SALE** — Lowrey organ, 4 years old. Used very little. Like new condition. Ph. 475-9288. x42

**FOR SALE** — 1971 Honda 450 and pieces. Brand new engine and parts, \$250. Ph. 229-5737 after 6 p.m. x43

**INTERNATIONAL** 4-row corn planter, good condition. Hay for sale. Ph. 475-2403. x42

**BALED HAY** for horses and cattle, \$1.20 and up. South of Chelsea. Ph. 475-8334. x43

**FOR SALE** — Double-wide mobile home. 3 bedrooms, 2 baths. 1 1/2 car. 1-car garage. All furniture, h.p. tractor, Pinckney area. By owner. \$25,000. Ph. 1-498-2174. x43

**FOR SALE** — 1976 Chevy 3/4-ton camper, Scottsdale interior, V-8, camper special. Power steering and brakes, tinted glass, and sliding rear window. 17,500 miles. \$3,700. Call before 3 p.m. (517) 851-8297. x42

**'72 NEWPORT** Royale. Ph., p.s., air. Ph. 475-7539 after 5 p.m. x43

**KEYPUNCH OPERATORS** — Experienced key punch operators wanted for afternoon shift. We have the latest equipment and offer excellent benefits. Contact Mr. Huff, 769-6511, ext. 414. x42

**FOR SALE** — 1976 Starcraft 14 1/2 ft. boat complete with 20 h.p. electric motor, outboard and deluxe trailer. Steering console with controls; false floor, built-in cooler and drawers, bilge, radio, CB hookup, battery, spare tire and prop; 2 down-riggers with counters. Excellent condition. \$1,950. Ph. 475-1835. x42

**COOK** — Immediate opening for part-time cook. Willing to train the interested candidate. Good salary and fringe benefit package offered as well as pleasant working conditions. Contact the personnel department at Chelsea Community Hospital. Ph. 475-1311. x42

**FOR SALE** — Household of furniture, 13707 Edgewater Dr., Gregory, Mich. 3 to 7 p.m. x42

**WANTED DEAD, Not Alive** — Downed timber for home heating. Will buy. Ph. 475-9489 evenings. x42

**AUCTION & CARD PARTY** Saturday, April 1, 7:30 p.m. at Dexter Masonic Temple, Broad St., Dexter. \$1 donation. Tickets at the door. Sponsored by Dexter Masons and OES. x42

## Legals

**STATE OF MICHIGAN** The Probate Court for the County of Washtenaw.

**Estate of BERTHA L. BECK.** File No. 8871.

**TAKE NOTICE**, On April 13, 1978, at 9:00 a.m., in the Probate Courtroom, Washtenaw County Building, Ann Arbor, Michigan, before the Hon. Rodney E. Hutchins, Judge of Probate, a hearing will be held on the Petition of Hans H. Rauer, 5141 W. Liberty, Ann Arbor, Michigan, for probate of a purported Will of the deceased, dated February 28, 1971, and for granting of administration to Robert E. Meader, 401 E. Liberty, Suite 400, Ann Arbor, Michigan, or some other suitable person and to determine the heirs of the deceased.

Creditors of the deceased are notified that all claims against the Estate must be presented to Robert E. Meader, 401 E. Liberty, Suite 400, Ann Arbor, Michigan, and a copy thereof, together with proof of the claim, filed with the Court on or before June 1, 1978.

Notice is further given that the Estate will be assigned to persons entitled thereto. Dated: March 20, 1978. Hans H. Rauer, Petitioner. 5141 W. Liberty. Ann Arbor, Michigan 48103.

**Attorney for Petitioner:** Robert E. Meader. 401 E. Liberty, Suite 400. Ann Arbor, Mich. 48108. Phone (313) 994-5530. March 30

**NOTICE BY PURCHASER UNDER TAX SALE** To the Owner or Owners of Any and All Interests in, or Liens Upon the Land Herein Described.

**TAKE NOTICE**, That sale has been lawfully made of the following described land for unpaid taxes thereon, and that the undersigned has title thereto under tax deed or deeds issued therefor, and that you are entitled to a reconveyance thereof, at any time within 6 months after return of service of this notice, upon payment to the undersigned or to the register in charge of the county in which the lands lie of all sums paid upon such purchase, together with 50 per centum additional thereon, and the fees of the sheriff for the service or cost of publication of this notice, to be computed as upon personal service of a declaration as commencement of suit, and the further sum of 5 dollars for each description without other additional cost of service. Provided That with respect to purchasers at the tax sale held in the years 1938, 1939 and 1940 the sum stated in such notice as a condition of reconveyance shall only be all sums paid as a condition of the tax title purchase, together with 10 per centum additional thereon. If payment as aforesaid is not made, the undersigned will institute proceedings for possession of the land.

**DESCRIPTION OF LAND:** State of Michigan, County of Washtenaw, Part of the Southwest 1/4 of Section 21 and vacated Canal Street commencing at point No. 35, thence South 57D 45M West 168.95 feet, for the point of beginning, thence South 58D 44M East 152 feet, thence North 58D 44M West 152 feet, thence North 31D 16M East 44.50 feet to the point of beginning, Section 21, Town 2 South, Range 6 East, City of Ann Arbor, according to plat thereof. Amount Due: \$6,687.39, tax for year 1972.

Amount necessary to redeem, \$10,036.09 Plus Fees of Sheriff and/or publication fees.

Dale McCauley, Place of Business: 27874 South Point Road, Grosse Ile, Michigan. To: Huron Development Corporation, an Ohio Corporation.

To: Toledo Trust Company, Toledo, Ohio. To: The person or persons in actual open possession of said lands, at 990 Broadway, Ann Arbor, Michigan.

March 16-23-30-April 6

**NOTICE OF MORTGAGE SALE** Default having been made in the terms of a mortgage made by MARGARET ELIZABETH DANE and OLIVE M. DANE and DINAH J. DANE to CAPITAL MORTGAGE CORPORATION dated August 16, 1971, and recorded August 26, 1971, in Liber 1369, Page 498, Washtenaw County Records, and assigned by said mortgage to PAINTERS UNION PENSION FUND by assignment dated November 25, 1971, and recorded December 10, 1971, in Liber 1380, Page 838, Washtenaw County Records, and thereafter assigned by said assignee to CAPITAL MORTGAGE CORPORATION by assignment dated December 17, 1977, and recorded February 8, 1978, in Liber 1637, Page 38, Washtenaw County Records, on which mortgage there is claimed to be due at the date thereof for principal and interest, the sum of \$18,254.05.

Under the power of sale contained in said mortgage and pursuant to the statute in such case provided, notice is hereby given that on the 20th day of April, 1978, at 10 o'clock a.m., local time, said mortgage will be foreclosed by a sale at public auction to the highest bidder at the West entrance of the Washtenaw County Building in the City of Ann Arbor, Washtenaw County, Michigan, that being the place where the Circuit Court of said County held of the premises described in said mortgage, or so much as may be necessary to pay the amount due with interest at 7 per cent



# PROCLAMATION

## Week of the Young Child

WHEREAS, the Chelsea Association for the Education of Young Children and other local organizations, in conjunction with the National Association for the Education of Young Children, is sponsoring the WEEK OF THE YOUNG CHILD, April 3 through 8, 1978; and

WHEREAS, by calling attention to the educational and service programs presently available to our young children, these voluntary professional groups hope to improve the quality of these programs as well as initiate new offerings; and

WHEREAS, these improved efforts will serve to insure that our young children, regardless of social or economic status, will reach their physical, intellectual and spiritual potential; and

WHEREAS, public co-operation from the home, school and community is needed to fulfill our responsibilities to young children

THEREFORE, I, Don D. Wood, President of the Village of Chelsea, Michigan, do hereby proclaim April 3 through 8, 1978, as

## WEEK OF THE YOUNG CHILD

in Chelsea, Michigan, and urge all citizens to support and encourage all agencies working for the well-being of young children in our city.

Dated: Feb. 28, 1978.

Don D. Wood, President,  
Village of Chelsea.

# NOTICE

## ANNUAL TOWNSHIP MEETING

NOTICE IS HEREBY GIVEN,

That the next Annual Township Meeting

of the Electors of the

## TOWNSHIP OF LYNDON

County of Washtenaw, State of Michigan

will be held at

## Lyndon Township Hall

(Corner of North Territorial Road and Townhall Road)

Beginning at 1:00 o'clock p.m.

**Saturday, April 1, 1978**

At such time in addition to other regular business and in accordance with the law, a budget covering proposed expenditures and estimated revenues of the Township shall be submitted for consideration. A copy of the budget will be open for inspection at the annual township meeting.

Signed: **CARLA CHERRY**  
Township Clerk.

Dated: March 9, 1978.

Advertise Your Auction  
in The Standard

To Assure A Good Attendance!

# NOTICE

## TOWNSHIP MEETING ANNUAL

NOTICE IS HEREBY GIVEN,

That the next Annual Township Meeting

of the Electors of the

## TOWNSHIP OF SYLVAN

County of Washtenaw, State of Michigan

will be held at

## Sylvan Township Hall

Beginning at 1:00 o'clock p.m.

on

**Saturday, April 1, 1978**

At such time in addition to other regular business and in accordance with the law, a budget covering proposed expenditures and estimated revenues of the Township shall be submitted for consideration.

Signed: **DANIEL MURPHY**  
Township Clerk.

Dated: March 9, 1978.

# SYLVAN TOWNSHIP

FINANCIAL STATEMENT AS OF MARCH 25, 1978

and  
Receipt and Disbursement Report April 1, 1977 to March 25, 1978  
CONTINGENT FUND

Balance on Hand April 1, 1977	\$ 23,770.43
REVENUE—	
Tax Collection	55,483.39
Revenue Sharing, State	14,543.84
Income Tax, State	519.09
Delinquent Taxes, County	2,765.75
Single Business Tax, State	30.34
Sales Tax, State	27,007.30
Zoning Permits	240.00
Late Personal Taxes	316.42
Swamp Tax, State	358.18
Miscellaneous	59.01
Appeals	750.00
	102,073.30
	\$125,843.73

LESS DISBURSEMENTS—	
Salary Fund	\$ 23,000.00
Trustee Meetings	1,240.00
Planning Meetings	1,265.96
Board of Review	1,450.00
Zoning	743.79
American Legion	150.00
Insurance	1,361.43
County Road Commission	7,188.29
County Maps	10.75
Washtenaw Township Association	25.00
Standard Printing	577.88
Equal. & Prop. Dept.	9.20
Appeal Meetings	456.03
Town Hall Fund	1,000.00
Cemetery Care	800.00
Supervisor Expense	148.50
Landfill	6,000.00
County Tax Printing	1,316.23
Schmitt & Barkley, Planners	3,000.00
Legal Fees	1,165.00
Michigan Township Association	855.00
Printing	137.50
Land Purchase	4,500.00
County Tax Appeal	20.00
Postage	619.48
Audit	650.00
Miscellaneous	6.09
Office Supplies	40.16
Fire Department	18,119.32
Mileage, Supervisor	500.00
Mileage, Clerk	100.00
Mileage, Treasurer	100.00
S. S. Acct.	936.12
	76,583.63
BALANCE ON HAND MARCH 25, 1978	\$ 49,250.08

Balance on Hand April 1, 1977	\$ 23,000.00
Less Disbursements	23,000.00
Balance on Hand March 25, 1978	—0—

Balance on Hand April 1, 1977	\$ 270.00
From Government	\$ 25,905.42
	26,175.42
Less Disbursements—	
McKune Library	\$ 1,712.25
Recreation Council	2,500.00
County Road Commission	20,963.17
Chelsea Transport Service	1,000.00
	26,175.42

Balance on Hand March 25, 1978	—0—
Balance on Hand April 1, 1977	\$ 335.05
REVENUE	\$ 1,000.00
LESS DISBURSEMENTS—	
Phone	217.26
Lights and Water	178.07
Heat	645.58
Cleaning	67.00
Supplies	23.97
	1,129.88

Balance on Hand March 25, 1978	\$ 205.17
Balance on Hand April 1, 1977	\$ 220.00
Receipts	2,640.00
Less Disbursements	2,640.00
Balance on Hand March 25, 1978	\$ 220.00
STATE WITHHOLDING FUND	
Balance on Hand April 1, 1977	\$ 231.00
Receipts	\$ 924.00
Less Disbursements	\$ 924.00
Balance on Hand March 25, 1978	\$ 231.00

Balance on Hand April 1, 1977	—0—
Receipts	1,057.14
Less Disbursements	936.12
Balance on Hand March 25, 1978	\$ 121.02
SUMMARY	
Contingent Fund	\$ 49,250.08
Salary Fund	—0—
Federal Revenue Sharing Fund	—0—
Town Hall Fund	205.17
Federal Withholding Fund	220.00
State Withholding Fund	231.00
Social Security Fund	121.02

CASH ON HAND MARCH 25, 1978	\$ 50,027.27
Checking Account Chelsea State Bank March 25, 1978	\$ 50,027.27
REPORT ON TAX COLLECTION	
December 1, 1977 through February 28, 1978	
1976 Taxes Assessed	\$2,701,970.61
Less Taxes Unpaid and Returned to County	148,886.14
TOTAL COLLECTED	\$2,553,084.47

DISTRIBUTION—	
To Township	\$ 55,483.39
To County	376,815.38
To Chelsea Schools	1,867,688.99
To Community College	155,363.73
To Intermediate School District	98,754.98
	\$2,553,084.47

Respectfully submitted,  
Fred W. Pearsall  
Sylvan Township Treasurer

## — OFFICIAL NOTICE —

## REGULAR MEETING OF THE DEXTER TOWNSHIP BOARD

will be held

**Tuesday, April 4, 1978 - 7:30 p.m.**

at the Dexter Township Hall, 6880 Dexter-Pinckney Rd.

**WILLIAM EISENBEISER**  
Dexter Township Clerk

## Cards of Thanks

### THANK YOU

We wish to thank our friends and neighbors for their kind expressions of sympathy, for visits, cards, and food brought to our home, and the many generous contributions to the Washtenaw County Community Mental Health Center. It was all deeply appreciated.

The Perniske Family.

### CARD OF THANKS

We wish to extend our heartfelt thanks for the many acts of kindness and expressions of sympathy extended to us by our friends, neighbors and relatives following the death of our beloved father and grandfather. We especially thank Dr. Krause, Betty Houston, Shirley Girard, Pastor Ratzlaff and the Burghardt-Cole Funeral Home.

Herbert Hochrein and family.  
Robert Hochrein and family.  
Charles Smith and family.

### CARD OF THANKS

We would like to thank our friends, neighbors and relatives for the many acts of kindness during our recent bereavement. Everything is greatly appreciated. Special thanks to the Rev. McCallum.

The family of  
Raymond Franklin.

### CARD OF THANKS

I wish to thank all my relatives, neighbors, friends and Rebekah Lodge for gifts, flowers, cards, visits and food brought to my home during my surgery at St. Joseph Mercy Hospital and since my return home. A special thank-you to the Rev. Roman Reineck for his calls.

Dorothy Mepyns.

### CARD OF THANKS

I would like to express my thanks to all my many friends, neighbors, and relatives for their many acts of kindness, and for the cards, gifts and flowers. I would especially like to thank the Rev. Schwarm and the staff at St. Joseph Mercy Hospital. I appreciate everyone's concern.

Garland DeVoe.

## Whitmore Lake Youth Completes Navy Recruit Training at Great Lakes

Navy Seaman Recruit Dean R. Rinesmith Jr., son of Mr. and Mrs. Dean R. Rinesmith, Sr., of 7867 Shady Beach, Whitmore Lake, has completed recruit training at the Naval Training Center, Great Lakes, Ill.

During the eight-week training cycle, he studied general military subjects designed to prepare him for further academic and on-the-job training in one of the Navy's 85 basic occupational fields. Included in his studies were seamanship, close-order drill, Naval history and first aid. Personnel who complete this course of instruction are eligible for three hours of college credit in Physical Education and Hygiene.

He joined the Navy in January 1978.

Telephone Your Club News  
To 475-1371.

## CHELSEA VILLAGE COUNCIL PROCEEDINGS

Regular Session, March 21, 1978  
The meeting was called to order at 7:30 p.m. by President Wood.

Present: President Wood, Administrator Weber, Clerk Neumeyer.

Trustees Present: Brown, Chriswell, Patrick, Rady, Schardein, Sweet.

Others Present: Police Chief Meranuck, Zoning Inspector Goltz, Planning Consultant Barkley, Howard Holmes.

The minutes of the March 7, 1978 regular session and the March 16, 1978 special session were read and approved.

The meeting was opened as a public hearing on proposed uses of Federal Revenue Sharing Funds Discussion followed.

Howard Holmes discussed with the council an application filed by the Chelsea Milling Co. for an amendment to the Zoning Map and the Proposed Use of the property.

Motion by Schardein, supported by Brown, to submit the Zoning amendment application of Chelsea Milling Co. to the Planning Commission for recommendation. Roll call: Yeas all. Motion carried.

Motion by Chriswell, supported by Sweet, to submit the application of the Chelsea Community Hospital for a zoning ordinance amendment to the Planning Commission for recommendation. Roll call: Yeas all. Motion carried.

The correspondence dated February 21, 1978 from Finkbeiner, Pettis, and Strout, Ltd., regarding "Additional Flow-Wastewater Treatment Plant" was discussed. Administrator Weber was instructed to conduct research on the amount of available vacant residential land.

Motion by Sweet, supported by Patrick, to reject the bid of \$55,000 for the 1948 International Tank Truck. Roll call: Yeas all. Motion carried.

Landfill agreements with the surrounding townships were discussed. No official action taken at this time.

Motion by Brown, supported by Chriswell, to increase the refuse fees of Village residents from \$1.50 per month to \$2.00 per month. Roll call: Yeas all. Motion carried.

Motion by Schardein, supported by Brown, to approve the addition of the position of Project and Grant Director to the Wage and Salary Schedule as presented. Roll call: Yeas all. Motion carried.

Motion by Chriswell, supported by Patrick, to pay bills as submitted. Roll call: Yeas all. Motion carried.

President Wood made committee appointments as follows:

President Protem, Schardein; Police Comm., Wood; Planning, Brown, Schardein; Recreation, Sweet, Rady; Fire, Chriswell, Sweet; Electric, Water & Sewer, Rady, Chriswell; Public Relations, Patrick, Brown; Personnel, Schardein, Patrick.

Motion by Brown, supported by Patrick, to adjourn. Roll call: Yeas all. Motion carried. Meeting adjourned.

Thomas J. Neumeyer,  
Village Clerk.

## ZONING BOARD OF APPEALS PROCEEDINGS

March 21, 1978  
The meeting was called to order at 9:48 p.m. by Chairman Wood.

## Dexter Township Board Proceedings

The regular meeting of the Dexter Township Board was called to order at 7:30 p.m. Tuesday, March 21, 1978. Those present were John Tandy, William Elsey, beiser, Lorenda Jedele, Arlen Howe, and John Miller.

The minutes of the March meeting were read and accepted. Actions taken by the Board:

1. Approved payment of the bills.

2. Requested Putnam Township to submit fire reports more promptly.

3. Adjusted the budget to meet expenditures.

4. Moved to limit the contest to be elected to one.

5. Voted to oppose the dues increase proposed by the Hur River Watershed Council.

6. Requested a meeting with representative from the Hur River Watershed Council.

A discussion of the proposed 1978 budget was held. Items concern included the rising cost of the landfill, fire protection legal fees.

Meeting adjourned 10:30 p.m. Respectfully submitted, William Eisenbeiser, cl

## FARLEY CONSTRUCTION

\$22 HOWARD RD.

ADDITIONS - REMODELING  
REPAIRS  
NEW HOMES

475-8265 or 475-7643

## NOTICE

## ANNUAL TOWNSHIP MEETING

NOTICE IS HEREBY GIVEN,

That the next Annual Township Meeting

of the Electors of the

## TOWNSHIP OF DEXTER

County of Washtenaw, State of Michigan

will be held at

## Dexter Township Hall

6880 Dexter-Pinckney Road

Beginning at 2:00 o'clock P.M.

on

**Saturday, April 1, 1978**

At such time in addition to other regular business and in accordance with the law, a budget covering proposed expenditures and estimated revenues of the Township shall be submitted for consideration and approval. A copy of the budget will be open for inspection at the office of the Clerk. A public hearing on the proposed annual budget for the fiscal year 1978-1979 will be held at 1:30 p.m.

Signed: **WILLIAM EISENBEISER**  
Township Clerk

Dated: March 9, 1978.

# NOTICE

## ANNUAL TOWNSHIP MEETING

NOTICE IS HEREBY GIVEN,

That the next Annual Township Meeting

of the Electors of the

## TOWNSHIP OF LIMA

County of Washtenaw, State of Michigan

will be held at

## Lima Community Hall

Beginning at 1:00 o'clock p.m.

on

**Saturday, April 1, 1978**

At such time in addition to other regular business and in accordance with the law, a budget covering proposed expenditures and estimated revenues of the Township shall be submitted for consideration.

Signed: **ARLENE BAR**

Dated: March 9, 1978.

# CATS

## CHELSEA AREA

## TRANSPORTATION SYSTEM

Transportation for the Senior Citizens,  
65 years and Older,  
and the Handicapped.

**CALL 475-9494**

between 9 to 11 a.m. or 1 to 3 p.m.

Service hours are 9 a.m. to 4:30 p.m. daily; Thurs., 9 to 1

Faster gains  
from better

**FEEDS**

Calves get growing and gain-  
ing faster on our balanced,  
fortified Calf Feed... en-  
riched with needed vitamins,  
minerals.

Complete feeding rations for  
all your livestock, poultry.

**FARMERS'**

**SUPPLY CO.**

PHONE 475-1777



# BOWLING NEWS



## Kahunas Mixed

Standings as of March 26

Untouchables .....	69
Ma Gu .....	67
Whitlocks .....	66
The Foursons .....	65
The Ups and Downs .....	64
All Stars .....	63
May's .....	62
Under Pools .....	61
Ma and them three .....	60
G and the Kids .....	59
Harry .....	58
Princess Mary's Gang .....	57
Whitlocks .....	56
Just for Fun .....	55
Four on the Floor .....	54
The Boppers .....	53
Sunday Funnies .....	52
Good, Bad & Ugly's .....	51
Men, games 180 and over:	
Pigg, 190; E. Church, 188;	
Baku, 185; M. Sweet, 186;	
G. White, 191; E. Greenleaf,	
E. Vasas, 208; Ed. Vasas,	
Women, games 150 and over:	
D. Steinway, 170; F. Ferry, 1	
51; M. Miller, 193; M. Da	
l, 171; Baku, 179; M. Picklesim	
orkingham, 173; J. Stapish, 1	
l; J. Harlick, 221; C. Stapish,	
156; D. Koenigster, 174; A. Gr	
173; 158; J. Sweet, 167, 150;	
J. C. Koern, 188; P. Bareis, 199;	
R. Forner, 168, 165, 154; C. Br	
adbury, 175, 163, 152; E. Hell	
178, 159; K. Clark, 181; S. Ste	
187.	

## Chelsea Suburban

Dairy Queen .....	157	8
Frislinger Realty .....	149	9
Chelsea Drug .....	138	10
Mark IV Lounge .....	136	10
Fletcher Mobil .....	132	10
Dancers .....	122	11
Dana Dee Lites .....	114	12
Rickards .....	114	12
Waterloo Garage .....	113	12
State Farm .....	98	14
Chelsea State Bank .....	94	14
Chelsea Assoc. Builders .....	72	16
150 games and over: P. Cole, 201; J. Schulze, 200, 162, 157; N. Collins, 184, 171, 166; A. Hocking, 174, 168, 169; J. Baku, 167, 165; D. Hawley, 158, 161; B. Beeman, 158; E. Figg, 179; M. Vasas, 157; A. Fahrner, 160, 164, 165; D. Hawley, 161, 169; W. Weber, 167, 169; E. Harmon, 168; D. Vargo, 153; A. Bohme, 151; K. Chapman, 160; G. DeSmith, 169; C. Tryand, 157; S. Winchell, 152; B. Loucks, 161; M. Bollinger, 155, 174; D. Keezer, 168; B. Fike, 152; R. West, 160; R. McGibney, 173; G. Baczyński, 167; N. Prater, 164; S. Nicola, 159, 168; B. Murphy, 169, 164; A. Bucholz, 160, 167; E. Miller, 158; J. Burnett, 191; C. Stoffer, 154; R. Musbach, 158; P. Harook, 186; L. Cobb, 164; N. Packard, 163; D. Keezer, 172; C. Thompson, 154, 161.		
425 series and over: N. Collins, 431; J. Schulze, 519; A. Hocking, 507; J. Baku, 481; D. Hawley, 476; B. Beeman, 482; F. Cole, 478; E. Figg, 472; A. Fahrner, 479; W. Weber, 460; J. Burnett, 461; A. Bucholz, 449; P. Harook, 451; S. Nicola, 456; B. Murphy, 440; C. Tryand, 452; G. Baczyński, 435; N. Packard, 461; G. DeSmith, 441; R. West, 441; M. Bollinger, 441; M. Vasas, 451; R. McGibney, 441.		

## Charlie Brown Prep

Standings as of March 25

Pin Busters .....	50 27 1/2
Strikes & Spates .....	51 30
Pin Smashers .....	47 31
Pin Panthers .....	46 32
Pin Wizards .....	45 33
Pin Poppers .....	42 34
Pin Dusters .....	38 35
Smokes & the Bandits .....	29 37
Bad News Bowlers .....	26 38
Fire Balls .....	22 39
Leaf, 165, 162; R. Robeson, 147; Leaf, 166, 162; R. Robeson, 147; 123; J. Morgan, 144, 124; J. Schaefer, 142; J. Toon, 139; G. Anderson, 132; P. Fletcher, 122; A. Fletcher, 121, 114; B. Hadley, 120; J. Packard, 120; D. Hodgkin, 115, 118.	
Girls, high games! T. Fletcher	
L. Melpyans, 135, 120; L. Kat-	
er, 129, 103; C. Hegadorn, 120;	
Kleis, 118; J. Tobin, 115, 108;	
Neverth, 111; A. Aeillo, 106.	

## Senior House League

Standings as of March 27

Chelsea Grinding .....	69 15
McCalla's Feeds .....	56 28
Wolverine Bar .....	51 33
Schneider's Grocery .....	50 34
of C. ....	49 35
Village Motor Sales .....	48 36
Mark IV Lounge .....	46 38
Wal's Barber Shop .....	46 38
Steele's Heating .....	44 40
Frank Grohs Chevrolet .....	44 40
Gambles .....	44 40
Captains Table .....	41 41
S. J. Custom .....	35 49
Sylvan Center .....	35 49
Washtenaw Crop Serv. ....	33 51
Bauer Builders .....	29 55
Central Fibre .....	25 59
Deansboro .....	9 76
600 series: W. Beeman, 606;	
525 and over series: B. Snyder,	
562; D. McCalla, 527; H. Bu-	
nett, Jr., 561; W. Westphal,	547;
B. Stacey, 559; G. Biggs,	527;
W. Marz, 536; B. Ervin, 566; G.	
Packard, 528; R. Maurer, 556;	
D. O'Dell, 526; M. Poertner,	556;
L. Keezer, 538; M. Sweet, 542.	
10 and over games: D. Pas-	
antonio, 21; W. Marz, 21; W.	
Beaman, 224; J. Bono, 226; D.	
McCalla, 213; K. McCalla, 214;	
Rouse, 220.	

## Nite Owl League

Standings as of March 27

Yu Boutique .....	127	76
VFW .....	121	82
Norm's Body Shop .....	115	88
Thompson's Pizza .....	115	88
Hanco Sports Center .....	114	89
Chelsea Finance .....	109	94
Ganja Oil .....	105	98
Doug's Painting .....	104	99
Ted's Waterloo Garage 103	100	
Al's TV .....	103	100
Cavanaugh Lake Store .....	102	101
Alley Rats .....	100	103
Wahl Oil .....	85	108
K. of C. ....	81	112
Chelsea Automotive .....	80	113
Fitzsimmon's Excav. ....	84	119
Mark V .....	80	123
A. D. Mayer Agency .....	69	134
200 games: D. Hansen, 209; D. Alexander, 205; J. Huehl, 203; D. Eder, 201; B. Furgason, 201.		
200 series: D. Hansen, 591; Jack		

Elliott, 522; D. Alexander, 535; J. Stoffer, 507; L. Jarvis, 506; W. Brown, 506; E. Eder, 533; John Elliott, 503; J. Spaulding, 530; J. Yelsik, 528; E. Baku, 516; B. Furgason, 507; R. Zatorski, 507; F. White, 534; K. Platt, 530.
--

## Rolling Pin League

Standings as of March 28

Grinders .....	86	34
Egg Beaters .....	72	48
Moppy Uppers .....	63	57
Pots .....	62	58
Sugar Bowls .....	61	59
Poachers .....	61	59
Mixers .....	60 1/2	59 1/2
Sugar & Spice .....	60	60
Kookie Cutters .....	59	61
Beaters .....	58	62
Blenders .....	58	62
Sporadic Spatulas .....	57	63
Brooms .....	57	63
Spooners .....	57	63
Coffee Cups .....	56	66
Jolly Mops .....	55	67
Jelly Rollers .....	52 1/2	67 1/2
Kitchen Kapers .....	49	71
500 series: P. Poertner, 573; D. Thompson, 501.		
425 and over series: D. Ringer, 445; B. Worsham, 458; B. Roberts, 427; J. Cronkhite, 476; E. Heller, 430; K. Hamel, 444; G. Klink, 459; E. Whittaker, 444; E. Williams, 430; S. Bowen, 409; M.		

## Charlie Brown & Snoopy Peanut League

Standings as of March 25

Clark, 181, 162;	G. Klink, 193;	E. Whitaker, 176;	J. Gersler, 151;
D. Farrington, 159;	J. Shepherd, 152, 166;	P. Borders, 180;	P. Poerner, 191, 151, 231;
M. Kolander, 150;	G. Smith, 167;	E. Williams, 158;	S. Bowen, 178, 160, 152;
H. Smith, 151;	L. Stoll, 152;	M. Biggs, 185, 157;	E. Heller, 157;
B. Torrance, 162;	K. Hamel, 164, 158;	J. Cronkrite, 154, 175;	D. Thompson, 183, 152, 166;
B. Roberts, 178;	S. Williams, 161;	W. Jackson, 151;	D. Ballet, 152;
D. Ringe, 187;	B. Worsham, 179;	E. Gibb, 166;	

## Leisure Time League

Standings as of March 23

Unpredictables .....	69	43
Misfits .....	68½	43½
Sugar Loafers .....	62½	49½
Afternoon Delights .....	61½	50½
Four Stooges .....	58½	53½
Crackpots .....	58	54
Roadrunners .....	56	56
Lady Bugs .....	51	61
Rug Rats .....	50	62
Mamas & Grandmas .....	49½	63½
Holy Rollers .....	45½	68½
Slowpokes .....	43	69
500 series: D. Thompson, 573; E. Heller, 555.		69
200 games: E. Heller, 247. 400 series: C. Hoffman, 430; S. Roehm, 413; A. Grau, 441; S. Bowen, 418; S. Centilli, 462; M. Brown, 407; D. Clark, 456; S. LaRocha, 444; D. Dault, 465; J. Barkley, 413; S. Friday, 402; K. Hayward, 440; G. Wheaton, 433; K. Hermon, 410; E. Williams, 429; P. Muncker, 447; L. Longe, 426; M. O'Donnell, 451; J. Staphish, 415; R. Forner, 408.		
Games 140 and over: C. Hoff- man, 169, 150; S. Roehm, 151, 149; A. Grau, 154, 151; S. Bowen, 144; P. Whitesall, 151; S. Centilli, 172; 160: E. Swanson, 147; G. Brier, 143; S. Weston, 148; M. Brown, 162; D. Clark, 144, 147, 165; S. LaRocha, 166, 143; L. Haller, 147; D. Dault, 146, 154, 165; A. Vander- waard, 146; J. Barkley, 164; D. Thompson, 190, 138, 197; S. Friday, 154; K. Hayward, 180; G. Wheaton, 147, 140; E. Williams, 143, 152; P. Muncker, 165; H. Dittmar, 143; M. Herrin, 152; M. R. Cook, 144; M. Schauer, 140; L. Longe, 156; M. O'Donnell, 158, 157; J. Staphish, 180; R. Forier, 159; E. Heller, 247; 151, 157; B. Robinson, 145.		

## Unknowns League

Standings as of March 22

Independents .....	124	79
Streakers .....	117	86
Shady Ladies .....	106	97
Strikers .....	91	112
Pin Dusters .....	86	117
Fascinating "5" .....	85	118
140 games or over: H. Horning,		
144; J. Sweeney, 142; D. Weiss,		
166; J. Steger, 144; J. Sweet, 149,		
181; D. Taylor, 174, 161, 152; R.		
Beeman, 167, 203, 153; A. Alexander,		
171; L. Lukasik, 149; J. Smith,		
160; J. Andariese, 167; K. Green-		
leaf, 140, 160; J. Lonskey, 152, 152,		
150; J. Hafner, 154, 155, 168; D.		
Verway, 142, 144; C. Richmond,		
160; M. J. Gipson, 182, 147, 157;		
D. Bentley, 181; C. Fleischman,		
145; J. Tuttle, 149, 146, 161; K.		
Clark, 154; C. Colvia, 141.		
425 series or over: D. Weiss, 433;		
J. Sweet, 459; D. Taylor, 487; R.		

## KEN OSBORNE INSULATION CONTRACTOR

★ Blown in side walls and attic.  
★ R = 4.17 per inch.  
★ Resists fire and moisture.  
★ Lightweight.  
★ Meets Federal Specification HH-1-515.  
★ This insulation made from 100% wood fibres.

KEEP COOL & SAVE FUEL. DON'T WAIT TOO LONG, IT'LL COST MORE LATER.

85 years in the building and insulation business in this area. FREE ESTIMATES

**KEN OSBORNE**  
Ph. (313) 851-7497  
ALUMINUM STORM WINDOWS AND DOORS

Beeman, 523; J. Smith, 431; J. Andariese, 443; K. Greenleaf, 428; J. Lonskey, 454; J. Hafner, 477; D. Verway, 425; M. J. Gipson, 488; D. Bentley, 428; J. Tuttle, 456.
--

## Junior House League

Standings as of March 24

Broderick Shell .....	121	82
Mark IV Lounge .....	119	84
Chelsea Lanes .....	118	85
Killins Concrete .....	115	88
Mich. Livestock Exch. ....	114	89
Lloyd Bridges Chev. ....	112	91
Slocum Contractors .....	111	92
3-D Sales & Service .....	108	95
Hanco Sports .....	100	97
D. D. Debaring .....	101	102
Mac Tools .....	100	103
Boyer Automotive .....	98	105
Smith's Service .....	93	110
Rockwell International .....	91	112
Washtenaw Engineering .....	82	121
Perfect Fit Seats .....	71	132
Roberts Paint & Body .....	40	163
525 or over: R. Ringe, 554; M.		
Murphy, 534; J. Harook, 545; J.		
Collins, 587; N. Fahrner, 571; W.		
Schulz, 547; E. Greenleaf, 539;		
M. McAllister, 533; G. White, 538;		
W. Beeman, 561; P. Kelly, 538;		
P. Fletcher, 548.		
210 or over: R. Schenk, 228; J.		
Harook. 216: E. Greenleaf. 246		

## Charlie Brown & Snoopy Peanut League

Standings as of March 25

Standings as of March 25		W	L
Dana Chargers	.....	56	23
Red Barons	.....	52½	28½
Road Runners	.....	47	34
Snoopy Raiders	.....	46	35
Bad News Bears	.....	41½	39½
Bowling Bulldogs	.....	38	42
Super Stars	.....	27½	53½
Cool Cats	.....	18½	62½
Games 70 and over: B. Hamel, 81; T. Lisznyai, 74; K. Lisznyai, 80; J. Petsch, 83; C. Baker, 91, 128; B. Robeson, 73; M. Anderson, 114, 81; P. Shures, 70; R. Murrell, 71; J. Boyer, 70; J. Waldyke, 71; B. Neverth, 88, 124; D. Collins, 120; D. Baku, 90, 102; T. Weir, 72, 98; R. Loucks, 71; H. Morrell, 133, 166; P. Bodnar, 73; N. Case, 62; C. Schulze, 99, 101; G. Alexander, 118, 137; T. Harook, 137, 123; L. Walton, 74, 94; T. Rowe, 84, 84; J. Settle, 81, 70; J. Willian, 123, 102; D. Zainb, 73, 110; B. Trimble, 96.			
Series 100 and over: B. Hamel, 150; T. Lukasial, 126; T. Lisznyai, 141; K. Lisznyai, 136; J. Petsch, 129; S. Baker, 129; C. Baker, 219; B. Robeson, 128; M. Anderson, 195; P. Shures, 134; R. Murrell, 130; J. Boyer, 136; J. Waldyke, 119; B. Neverth, 212; D. Collins, 172; D. Baku, 192; T. Weir, 100; R. Loucks, 134; H. Morrell, 269; P. Bodnar, 141; N. Case, 120; C. Schulze, 200; G. Alexander, 255; T. Harook, 259; L. Walton, 168; T. Rowe, 168; T. Thurkow, 110; J. Settle, 151; J. Willian, 223; D. Zainb, 135; B. Trimble, 133.			

If your water is hard, corrodes pipes, stains fixtures, tastes bad—then nothing in a can, box, or bottle can correct it.

**Culligan can.**

If the water in your house looks cloudy, stains wash and porcelain, tastes or smells bad, spots dishes or glassware, we'll test it for you free of charge.

We'll tell you exactly what the trouble is and recommend the best, most economical way to get clean, clear filtered fresh water.

Water conditioning is our full time business. We are local specialists backed by the world's leading maker of water conditioning products.

Simply call 662-5665

**Culligan**  
2321 Jackson Ave., Ann Arbor

## Chelsea Lanes Mixed

Standings as of March 24

W	L
Wire & Fire .....	118 78
Ken's Glass .....	107 89
Accra Gauge .....	106 90
Ann Arbor Centerless .....	103 93
Fox Point Flashes .....	102 94
Fireballs .....	102 94
VFW .....	99 97
Hawley Truck Repair .....	99 97
The Bandits .....	98 98
Question Marks .....	97 99
Bollinger's Sanitation .....	96 100
Federal Screw Outlaws .....	86 110
Roadrunners .....	86 110
King Pins .....	73 123

Women, series 425 and over: S. Centilli, 435; J. Norris, 428; D. Keezer, 483; D. Hawley, 482; B. Torrice, 438; D. Oesterle, 428.

Men, series 475 and over: A. Hawley, 478; E. Vasas, 497; A. Wisniewski, 498; A. Sannes, 502; J. Richmond, 479; N. Lee, 502; J. Torrice, 561; D. Ellenwood, 482.

Women, 150 games and over: S. Centilli, 155; J. Norris, 165; D. Keezer, 175, 158, 150; D. Hawley, 213; P. Weigang, 174; G. Bojanowski, 158; D. Vasas, 161; B. Torrice, 158; D. Oesterle, 175.

Men, 175 games and over: J. Norris, 178; A. Hawley, 183; E. Vasas, 175, 190; A. Wisniewski, 179; D. Ellenwood, 203.

## One-Day Course in Nature Photography

Offered at Mill Lake

A short course in nature photography, open to the public, will be given at Mill Lake Outdoor Center in the Waterloo Recreation area Saturday, April 8 at 1 p.m.

Taught by Ray Steinbach, Washenaw Community College co-ordinator of Visual Arts Technology, the course is sponsored by the Michigan Environmental Education Association. Fee for the course is \$3. Participants are encouraged to bring cameras although this is not required.

Registration for the course may be made by sending the course fee, name, address and phone number to Waterloo Spring Workshop, 70 Cedar Lake, Chelsea 48118.

More than 400 young executives have graduated from Michigan State University's Advanced Management Program offered in Detroit since 1964.

175, 175; A. Sannes, 186; N. Lee, 185; J. Torrice, 204, 194; D. Hatt, 179; D. Ellenwood, 203.

### Thinking CARPET?

## Think SCHNEIDER'S

Visit the wonderful world of carpeting at Schneider's, one of the area's finest, full-service carpet stores, conveniently located in West Ann Arbor on Wagner Road between Jackson and Liberty.

Schneider's carries a broad selection of quality, name-brand carpets at prices consistently among the lowest in the entire area. Try us.

**662-9332**

OPEN MON & FRI NIGHTS TIL 8:00 PM

**SCHNEIDER CARPET CO. INC.**

745 S. WAGNER RD. ANN ARBOR

### A Standard Want Ad Gets Results!

## McCalla Feed Service

Phone 475-8153

12875 Old US-12 E. Chelsea

**WAYNE DOG FOOD**  
**WAYNE CAT FOOD**  
**WATER SOFTENER SALT**  
**BIRD FEEDS**  
**SUNFLOWER SEEDS**  
**HORSE FEEDS**  
**RABBIT FEED**

**Bird Houses - Dog Houses**

### Get Out of That Rut . . .

## DON'T BE A "STUCK IN THE MUD"

Call **M & M GRAVEL CO.**

Repair Your Old Driveway Or Build A New One!

WE CAN DO THE JOB . . . WE HAVE WHAT IT TAKES!

★ ROAD STONE  
★ BASE STONE  
★ DRAINFIELD STONE  
★ WASHED SAND  
★ PEA STONE  
★ FILL DIRT

**PHONE 475-1941**

Or after 4 p.m. (313) 498-2866

Located 4 Miles North of Chelsea M-52 and ROE ROAD

PIT HOURS: 8 to 5 Mon. thru Fri. 8 to 12 Sat.

# "HEY, THAT'S MY DODGE!"

## '78 DODGE ASPEN COUPE.

That's what folks are saying these days. Because more and more people are discovering what Dodge has to offer. Like Aspen, the biggest sales success story in Dodge's history. And no wonder! Aspen has been styled, sized, and priced right.

Aspen gets the right kind of mileage, too. EPA mileage estimates for Aspen coupe with six-cylinder engine and manual transmission are 28 mpg highway and 20 mpg city. Your actual mileage may vary according to your car's condition, its equipment, and your driving habits.

One more thing . . . a 1976 Aspen coupe offers greater resale value than Chevy Nova, Buick Skylark, or Olds Omega. This comparison is based on average resale values of comparably equipped one-year-old vehicles as listed in the AMR Guide Book dated October 5, 1977.

So if you're looking for a comfortable, roomy, good-looking, smooth-riding car, look into a new Aspen coupe, sedan, or wagon today.

In no time at all, you'll be saying . . . "That's my Dodge!"

**Dodge**

**VILLAGE MOTOR SALES, INC.**  
1185 MANCHESTER ROAD  
CHELSEA, MICHIGAN

### SERVING SANDWICHES

from 11:00 a.m. till 2:00 a.m. Mon. thru Sat.  
Open Sunday 12:00 Noon Till 11 p.m.

BEER & WINE CARRY-OUT FOOD CARRY-OUT

## MARK IV LOUNGE

1180 M-52 Phone 475-1951 Chelsea

# OPEN BOWLING

**MONDAY thru FRIDAY**  
**10:30 a.m. to 6 p.m.**

**SATURDAY**  
**11 a.m. to 12 midnight**

**SUNDAY**  
**12 noon to 5:30 p.m.**

## CHELSEA LANES, Inc.

1180 M-52 Ph. 475-8141





**CELEBRATING GIRL SCOUT WEEK** a little early, Troop 719 and their sponsor the Chelsea Lions Club met for the first time at the club's regular dinner meeting Tuesday, March 21. "We invited the girls to our meeting in order to become acquainted with them and with us," explained the club's president Tom Dmoch. Each group presented a short description of their activities and goals during the meeting. Also on hand for the event was Lions Deputy District Governor Harold "Hop" Anderson on his annual visit from Clark

Lake. Kneeling in the front row are, from left to right, Latisha Richardson, Jennifer Colvin, Michelle Easton, and Jill Schaffner; second row standing from left, Heather Grenier, Melinda Fletcher, Cheryl Martin, Kim Kaminski, and Julie Thompson; third row, from left, Tom Dmoch, Lions Club president, Kelly Hawker, Shelly Wheaton, Tina Salts, Karen Killelea, and Louise Likavec, Chelsea troop service director. Not pictured is the troop's leader Lynda Longe.

## America & Me Essay Contest Winners Told

Three students from Beach Middle school have been named local winners in the 1977-78 American & Me essay contest, sponsored by Farm Bureau Insurance Group. First-place winner is Sarah Leisinger; second-place winner is Karla Troutman; and third-place winner is Karen Miller. All three girls are 8th graders.

As the school's first-place winner, Sarah's essay will advance to the state level competition from which the top 10 essays in Michigan will be selected.

Each girl will receive an honor certificate for her achievement. In addition, Sarah's name will be engraved on a plaque for permanent display in the school.

More than 7,500 8th grade students from 370 Michigan schools submitted entries in the contest. "The annual contest encourages Michigan's young people to seriously consider their roles in America's future through 'America & Me' essays," according to Farm Bureau Insurance Group which sponsors the event.

On the local level, winners are selected from each school and the school's best entry is advanced to the state-wide competition. Prizes for the top 10 in the state include savings bonds ranging in value from \$50 to \$500.

A panel of Michigan dignitaries, headed by Gov. William Milliken, will determine the final top 10 winners of 1977-78. Other members of this year's finalist judging panel are State Supreme Court Justice Mary Coleman, Congressman Robert Carr, and Grand Rapids television personality Buck Matthews.

As sponsor of the contest since 1968, Farm Bureau Insurance Group has received seven national awards from the Freedoms Foundation at Valley Forge.

Editorial Note: The following creative writing was submitted by the school's first-place winner. The original has been re-typed for your ease in reading, but no changes have been made to the student's original wording.

### "AMERICA AND ME"

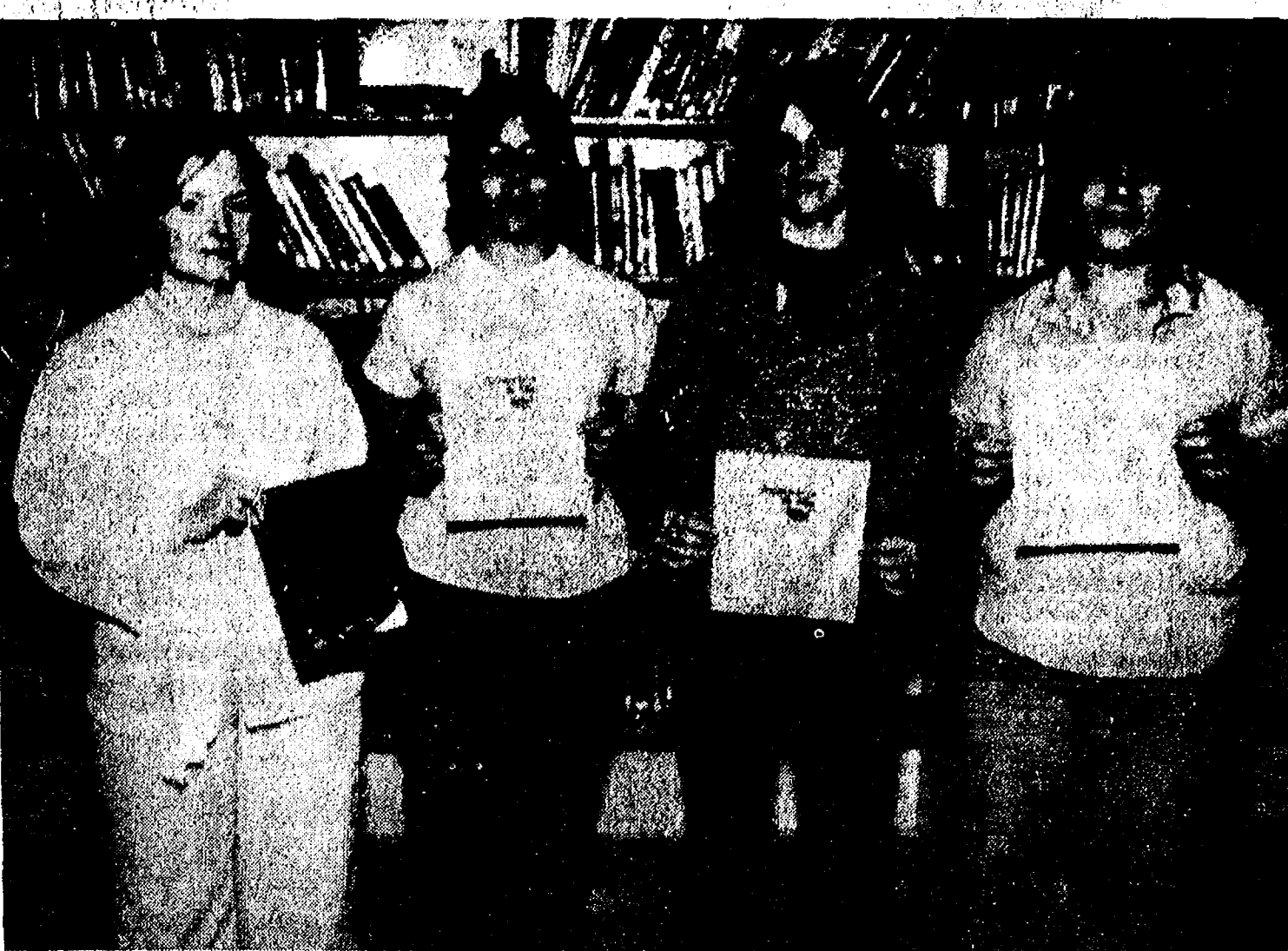
To me, America is the perfect country. Where else can a person buy land and start a business? There is no one who can stop him.

He elects his own presidents. No one can make him vote for anyone but who he chooses.

A person can be a politician, banker, lawyer, doctor, mechanic, or a bum. The money that is made by this person at his profession can be spent on gambling, drinking, the family, or deposited in the bank.

The family of this person can live in a house, trailer, or a car. This home can be anywhere that the family desires.

There is freedom of speech, as long as there is no slander. There is also freedom of the press. A person can read, write, listen to, or watch anything that he wishes. Yes, America can be summed up in one word, Freedom.



"AMERICA AND ME" essay winners are, from left to right, Sarah Leisinger, 1st place; Karla Troutman, 2nd place; and Karen Miller, 3rd place. Sue Craig, far left, English teacher at Beach Middle school, supervised the essay contest.

**Need Entertainment?** **BOYER and FIZSIMMONS MAGIC**

"More Foola for Your Moola"

Magic Shows for any occasion. (313) 475-8266

### Letters to the Editor

To the Editor,

Since you feel free to publish my name in your paper, unbeknownst to me, I would appreciate a little more of your space.

It's past time that some one makes the voting, as well as the general population, aware of the deplorable court and jail conditions existing in Washtenaw county.

Naturally, the news media is the best means to relay these malfunctions to the public.

Foremost is the overcrowding in the jail. Nearly all of the cells have inmates sleeping on the floors (concrete). At times the admitting cell, which has provisions for 10 men, has housed as high as 25 men from four to five days.

In the basement kitchen the floor drain overflows when they flush the toilet in the adjacent cell. Would you like to eat food from this area?

Another situation is the confinement of prisoners with contagious diseases. Since my confinement I have personally seen more than one case of hepatitis in here. They do not have the proper facilities to isolate and treat these cases. The Health Department has been alerted about this.

Most of the public is probably not aware that this overcrowding is going to be included in the move to the new jail in April. A few weeks ago this county had prisoners lodged in nine other county jails. Some as far away as Newaygo and Montcalm counties.

The provisions for the bonding out of people awaiting trial are set forth by your local courts.

Because of the complexity of this system I so far have been unable to post bond for drunk driving. I have a job and could be working. As it is I am going on my third month of incarceration and will spend five months before my final trial.

Maybe it's high time some of you sit in on a few County Commission meetings and get a few things out in the open.

Stan Poloski,  
Washtenaw County Jail.

### Rogers Corners 4-H In State Rabbit Show Club Members Win

Rogers Corners Herdsmen 4-H Club of Chelsea and Napoleon Helpful Clovers 4-H Club of Jackson attended the annual Michigan State Rabbit Breeders Association convention and exhibition in East Lansing Wednesday, March 22.

Mike Machesky of the Rogers Corners Herdsmen took Best of Breed with his Black Polish buck and Laurie Heller took Best Opposite Variety with her New Zealand Red doe.

Other Herdsmen members who took first place for their rabbit projects include: Jeff Martin, Mike Machesky, Ralph Machesky, Mark Machesky, Kelly Machesky, and Laurie Heller who took two first prizes. Also showing for the Herdsmen were Kenny Martin, Doug Inglis, Susie Peterson and Matt Peterson.

Showing for the Napoleon Helpful Clovers, among others, was Brian Beahm who took Best of Breed with Champagne and the Best Buck of the show over 500 rabbits.

Anyone interested in rabbit breeding and rabbit projects is invited to call Caroline Machesky at (517) 522-8828 for more information.

### SUPER TREAT! DRIED PINEAPPLE RIVENDELL NATURAL FOODS

Monday - Saturday  
10 a.m. - 6 p.m.

3212 Alpine, Dexter  
Across from Farmers' Market  
Ph. 426-2549

A Standard Want Ad Gets Results!

**PUT CHELSEA ON YOUR BACK**

**KASHA LINED NYLON JACKETS**

BOYS 6 to 20 **\$18<sup>95</sup>**

MENS S to XL **\$19<sup>95</sup>**

**Also, MICHIGAN LETTERED JACKETS**

**WE CARRY THE VARSITY AWARD SWEATER**

White V-Neck **\$18<sup>95</sup>**

STORE HOURS: Mon. thru Sat., 8 to 5:30

**STRIETER'S MEN'S WEAR**  
Since 1914

**A & W CHELSEA**  
M-52 and I-94

**SPECIAL EVERY TUESDAY CONEY HOT DOGS 45c**

**SPECIAL EVERY WEDNESDAY FOOT LONG HOT DOGS and ROOT BEER \$1.00**

OPEN 7 DAYS A WEEK  
**475-2055**

**SAVE TIME - CALL AHEAD FOR CARRY-OUT ORDERS**

Attachments that go on and off in seconds.

42" or 36" snow thrower doesn't have any pins to shear. Takes on ice, wet snow, hardpacked snow with a solid-flight, welded auger. Freeze-proof chute adjusts while you're working. Lets you throw snow where you want to.

42" grader blade or 46" or 42" snow plow and dozer blade. The blade that lets you work at high tractor speed. Tilts with the front axle of the tractor for sloping surfaces. Skims from a gravel surface or clears clean...right down to hard surfaces.

Vacuum collector lets you mow, vacuum and mulch...all at the same time. Cleans full width of the mower...goes anywhere the tractor can. Nozzle lets you clean under bushes and in window wells.

10 cu. ft. dump cart hauls up to 1000 pounds. Can be tipped completely over without unhitching. And you can dump it right from the tractor seat.

Rotary tiller works in sod...or in soil that's been worked before. Gentle action prepares the ideal seed bed...won't destroy humus. Tine extensions let you adjust the width to your own special needs.

Three drives for you to choose from.

**Hydrostatic Drive** works like your car's automatic transmission. Gives you complete control over tractor speed...no clutching, no shifting from slow to top speed.

**4-speed Shuttling Drive** lets you move from forward to reverse in any speed range. Lets you slow for turns or working in close. All without clutching.

**3-speed all-gear transmission** is rugged, built to take years of hard use. Built to get the most out of the engine. Gives you 3-speeds forward and one in reverse.

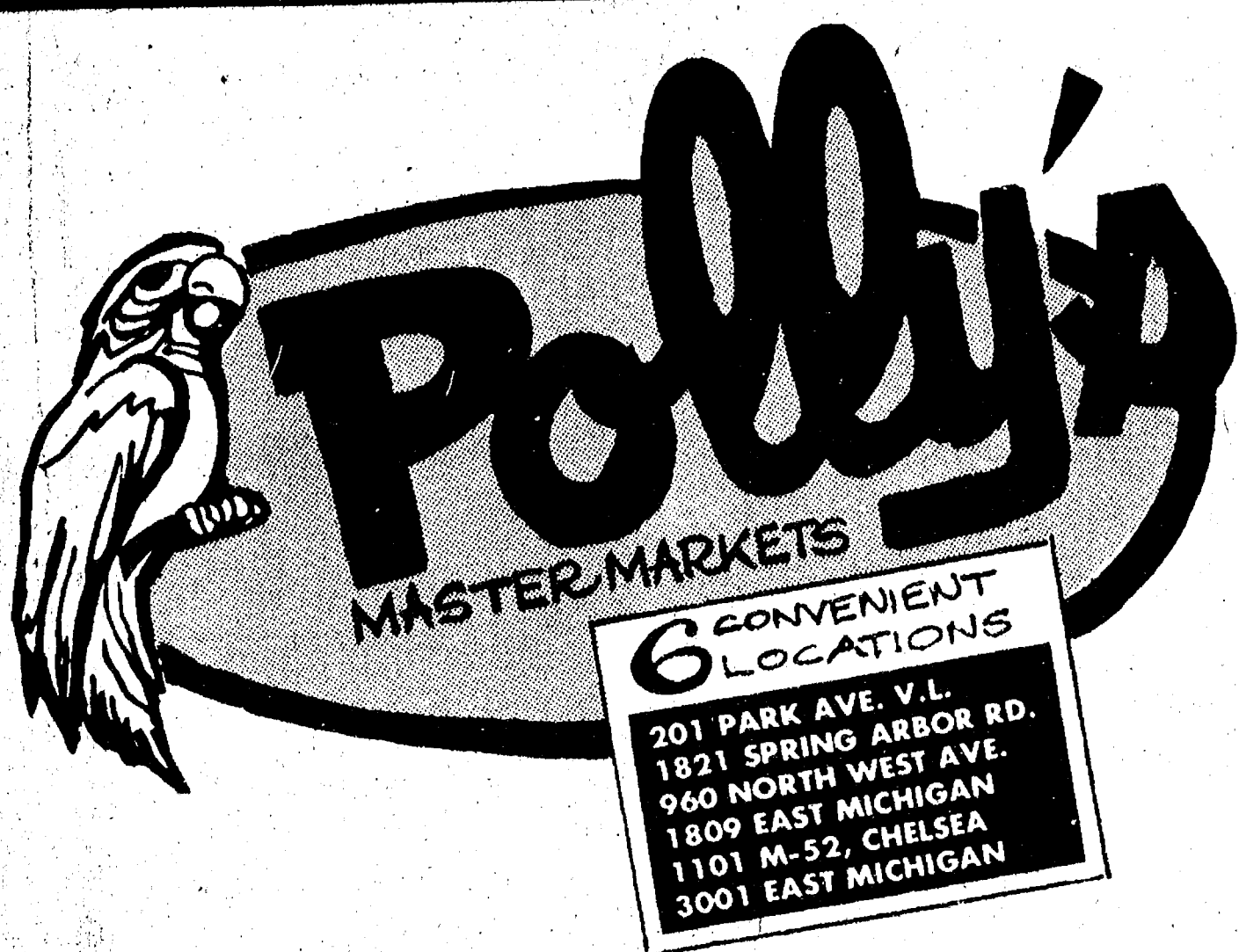
Your life is complicated enough. We offer

**Simplicity**

Come in and meet JIM ALLEN, our new sales and service manager and see our enlarged parts department.

**CHELSEA HARDWARE**  
110 N. Main St., Chelsea Ph. 475-1121





**get to know us...**  
**WE CAN HELP YOU SAVE ON YOUR FOOD BILL!**

**Open Daily 8 to 10**  
**Sunday 9 to 9**

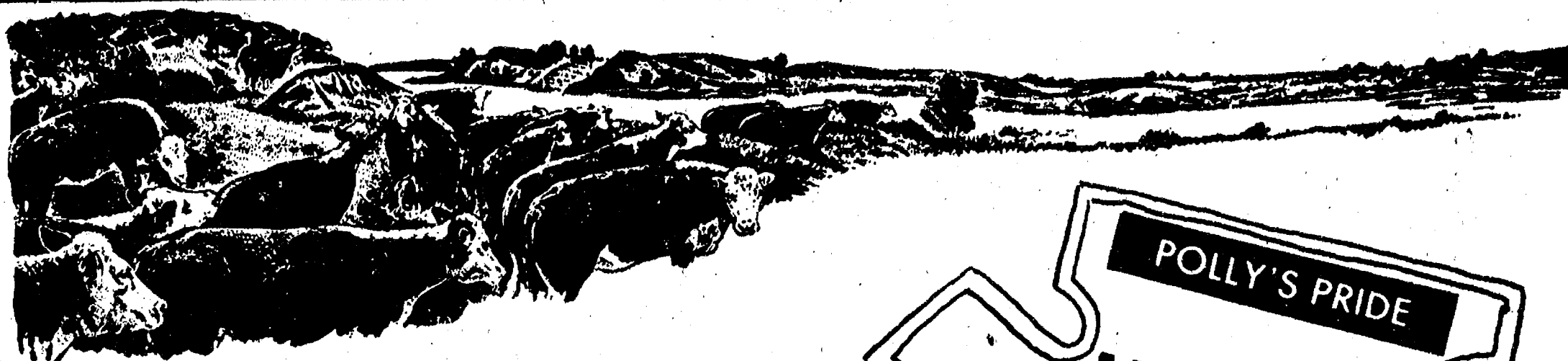
- ★ **QUALITY PRODUCE**
- ★ **QUALITY MEAT**
- ★ **COLD BEER, WINE, LIQUOR**
- ★ **LOTTERY TICKETS**
- ★ **SIDES OF BEEF**
- ★ **FRUIT BASKETS**
- ★ **DRY CLEANING**
- ★ **PHOTO PROCESSING**
- ★ **VARIETY AT LOW PRICES**



# Polly's

MASTERMARKETS

**6 CONVENIENT LOCATIONS**  
 201 PARK AVE., V.L.  
 1821 SPRING ARBOR RD.  
 960 NORTH WEST AVE.  
 1809 EAST MICHIGAN  
 1101 M-52 CHELSEA  
 3001 EAST MICHIGAN

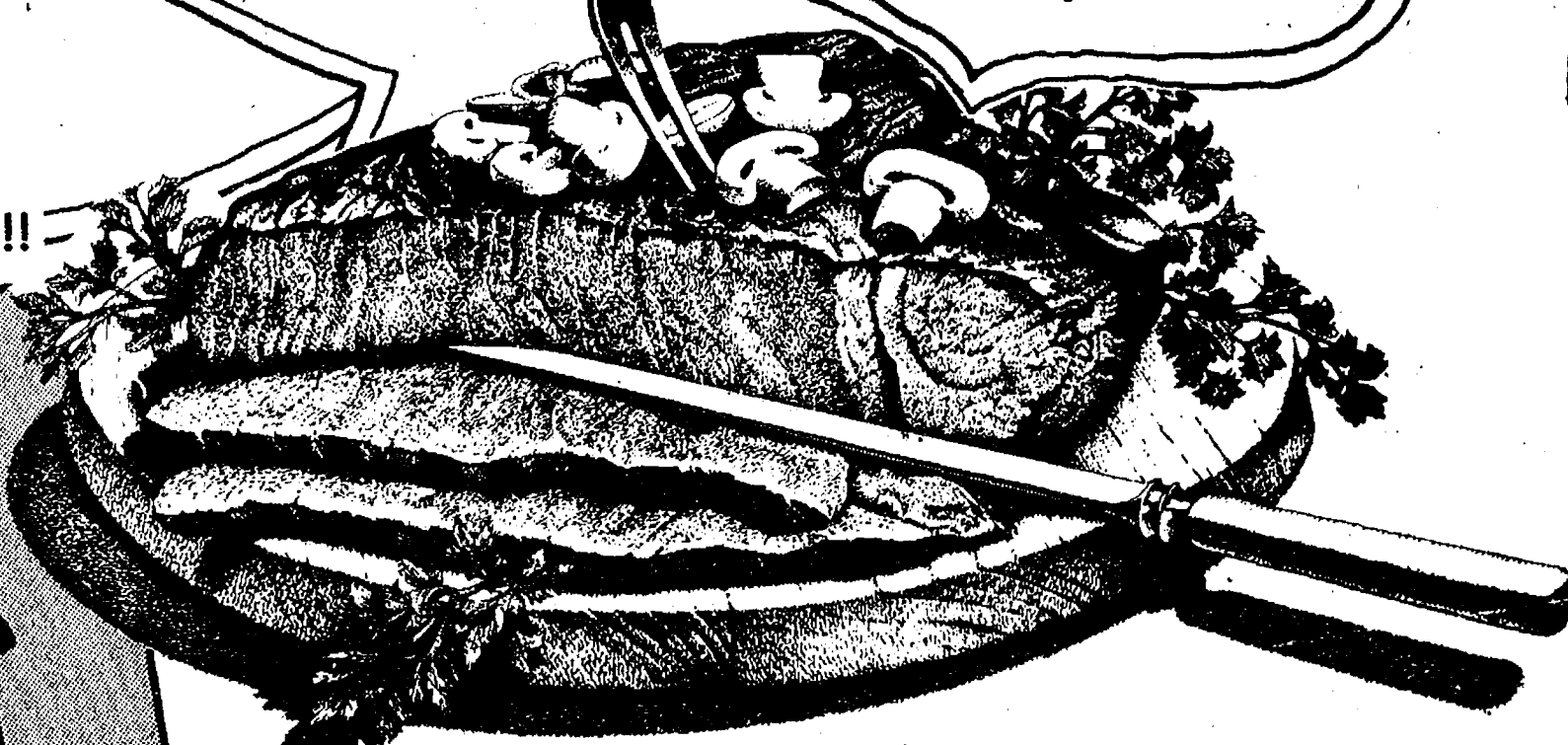


POLLY'S HAS GONE WEST TO PURCHASE

## 50,000 LBS.

OF U.S.D.A. CHOICE BEEF HEIFERS, ALLOWING YOU TO BUY AT THESE LOW QUANTITY DISCOUNT PRICES. BUY NOW AND SAVE!!

POLLY'S PRIDE  
**U.S.D.A. CHOICE BEEF**  
 Western Raised Heifers



**SAVE OVER \$4.50**  
 WITH POLLY'S BONUS AND IN-STORE COUPONS

### BONUS COUPON

**SAVE 26¢**  
 ABSORBENT **VIVA**  
 PAPER TOWELS  
**59¢**  
 TWIN-PAK  
 LIMIT ONE

Limit One Coupon Per Family  
 Coupon Expires April 1, 1978  
 With this Coupon & \$5.00 Purchase  
 Excluding Beer, Wine or Cigarettes



### BONUS COUPON

**SAVE 32¢**  
 DELMONTE **CATSUP**  
**59¢**  
 32-OZ.  
 LIMIT ONE

Limit One Coupon Per Family  
 Coupon Expires April 1, 1978  
 With this Coupon & \$5.00 Purchase  
 Excluding Beer, Wine or Cigarettes



### BONUS COUPON

**SAVE 24¢**  
 SUNSHINE **KRISPY**  
 SALTINE CRACKERS  
**39¢**  
 1-LB. BOX  
 LIMIT ONE

Limit One Coupon Per Family  
 Coupon Expires April 1, 1978  
 With this Coupon & \$5.00 Purchase  
 Excluding Beer, Wine or Cigarettes



U.S.D.A. CHOICE BEEF  
**CHUCK ROAST**  
 LB. **79¢**

**LAUNDERED SHIRTS**  
 only **49¢**

TASTERS CHOICE  
 FREEZE-DRIED  
**COFFEE**  
 8-OZ. **\$5.29**

U.S.D.A. CHOICE  
 4TH THRU 7TH RIB

**RIB ROAST** LB. **\$1.49**

U.S.D.A. CHOICE BEEF  
**ARM-CUT ROAST** LB. **99¢**  
 U.S.D.A. CHOICE BEEF  
**ENGLISH ROAST** LB. **99¢**  
 U.S.D.A. CHOICE BEEF  
**RUMP ROAST** LB. **\$1.49**  
 U.S.D.A. CHOICE BEEF  
**SHORT RIBS** LB. **79¢**  
 U.S.D.A. CHOICE  
**BEEF HEART** LB. **69¢**  
 U.S.D.A. CHOICE BEEF  
**STEW MEAT** LB. **\$1.29**

U.S.D.A. CHOICE BEEF BONELESS  
**CHUCK ROAST** LB. **\$1.09**  
 100% PURE BEEF  
**HAMBURG** LB. **89¢**  
 U.S.D.A. CHOICE WHOLE  
**BEEF TENDERLOIN** LB. **\$2.99**  
 U.S.D.A. CHOICE  
**BEEF LIVER** LB. **69¢**  
 U.S.D.A. CHOICE  
**BEEF TONGUE** LB. **89¢**  
 U.S.D.A. CHOICE BEEF  
**LONDON BROIL** LB. **\$1.99**

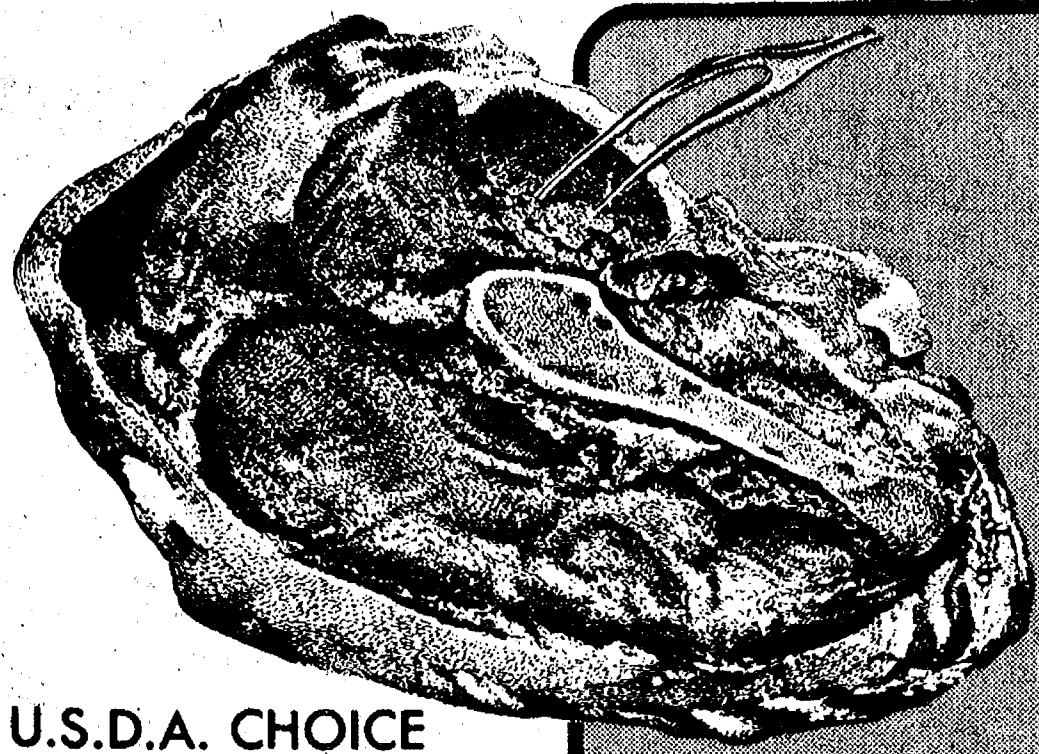


BORDEN 1  
**LO-FAT MILK** PLASTIC GALLON **\$1.09**

BORDEN OLD-FASHIONED  
**ICE CREAM** HALF-GALLON ROUNDS **\$1.29**  
 WITH IN-STORE COUPON

BORDEN **HALF n' HALF** QT. **69¢**  
 AUNT HATTIES **BREAD** 24-OZ. **59¢**





U.S.D.A. CHOICE  
**ROUND STEAK**

U.S.D.A. CHOICE BEEF <b>CHUCK STEAK</b>	LB.	<b>89¢</b>
U.S.D.A. CHOICE BEEF <b>CLUB STEAK</b>	LB.	<b>\$1.89</b>
U.S.D.A. CHOICE BONELESS <b>ROUND STEAK</b>	LB.	<b>\$1.49</b>
U.S.D.A. CHOICE BEEF <b>TIP STEAK</b>	LB.	<b>\$1.89</b>
U.S.D.A. CHOICE <b>PORTERHOUSE</b>	LB.	<b>\$2.19</b>
U.S.D.A. CHOICE BEEF <b>CUBE STEAK</b>	LB.	<b>\$1.59</b>
U.S.D.A. CHOICE BEEF <b>FLANK STEAK</b>	LB.	<b>\$1.89</b>
HECKRICH <b>HOT DOGS</b>	LB.	<b>\$1.29</b>
HECKRICH <b>SMORGAS PAK</b>	LB.	<b>\$1.59</b>
HERRUD FAMILY PAK <b>LUNCH MEAT</b>	20-OZ. W/IN-STORE COUPON	<b>\$1.39</b>
HERRUD HICKORY HOST <b>HOT DOG</b>	LB. W/IN-STORE COUPON	<b>89¢</b>

U.S.D.A. CHOICE  
**SIRLOIN STEAK**  
LB. **\$1.69**

LB. **\$1.39**

U.S.D.A. CHOICE  
**RIB STEAK**  
LB. **\$1.69**

U.S.D.A. CHOICE  
**T-BONE STEAK**  
LB. **\$2.09**



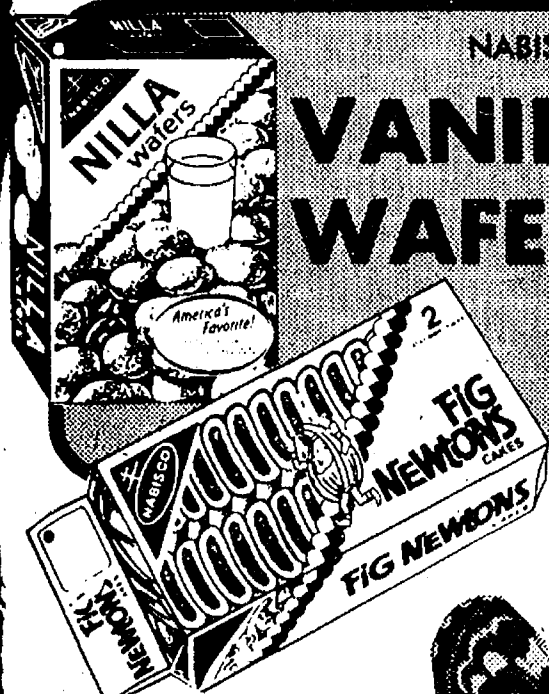
CALIFORNIA 88-SIZE  
**NAVEL ORANGES**

**10 for 99¢**



PIC-A-NUT  
**JUMBO PISTACHIO NUTS**  
8-OZ.  
**\$1.39**  
W/IN-STORE COUPON

FRESH 27-SIZE <b>CANTALOUPE</b>	EA.	<b>89¢</b>
FLORIDA PASCAL <b>CELERY</b>	EA.	<b>39¢</b>
FRESH <b>COLE SLAW</b>	1-LB.	<b>49¢</b>



NABISCO  
**VANILLA WAFERS** 12-OZ. **59¢**  
NABISCO  
**FIG NEWTONS** 16-OZ. **89¢**

SAVE 26¢ W/IN-STORE COUPON <b>SMUCKERS GRAPE JELLY</b>	32-OZ.	<b>79¢</b>
SAVE 18¢ W/IN-STORE COUPON <b>AJAX WINDOW CLEANER</b>	20-OZ.	<b>39¢</b>
SAVE 14¢ W/IN-STORE COUPON <b>CARNATION COFFEE MATE</b>	11-OZ.	<b>89¢</b>

CHEESE, SAUSAGE or PEPPERONI <b>TOTINO'S PIZZAS</b>	13-OZ.	<b>79¢</b>
COUNTRY TIME <b>LEMONADE</b>	12-OZ.	<b>39¢</b>
GOURMET WESTERN STYLE <b>HASH BROWNS</b>	32-OZ.	<b>49¢</b>
BANQUET <b>MOSTACCIOLI</b>	32-OZ.	<b>99¢</b>
BANQUET <b>ROTINI</b>	32-OZ.	<b>99¢</b>

**DEL MONTE GARDEN SHOW**



DEL MONTE  
• **FRENCH GREEN BEANS**  
DEL MONTE  
• **CUT GREEN BEANS**  
DEL MONTE  
• **SPINACH**  
**3** 16-OZ. CANS **for \$1.00**

DEL MONTE • <b>CREAM GOLDEN CORN</b> DEL MONTE • <b>WHOLE KERNEL CORN</b> DEL MONTE • <b>EARLY JUNE PEAS</b>	17-OZ. CANS	<b>4 for \$1.00</b>
DEL MONTE <b>TOMATO JUICE</b>	46-OZ.	<b>49¢</b>
DEL MONTE PINK <b>GRAPEFRUIT JUICE</b>	46-OZ.	<b>49¢</b>
DEL MONTE <b>SEEDLESS RAISINS</b>	15-OZ.	<b>89¢</b>

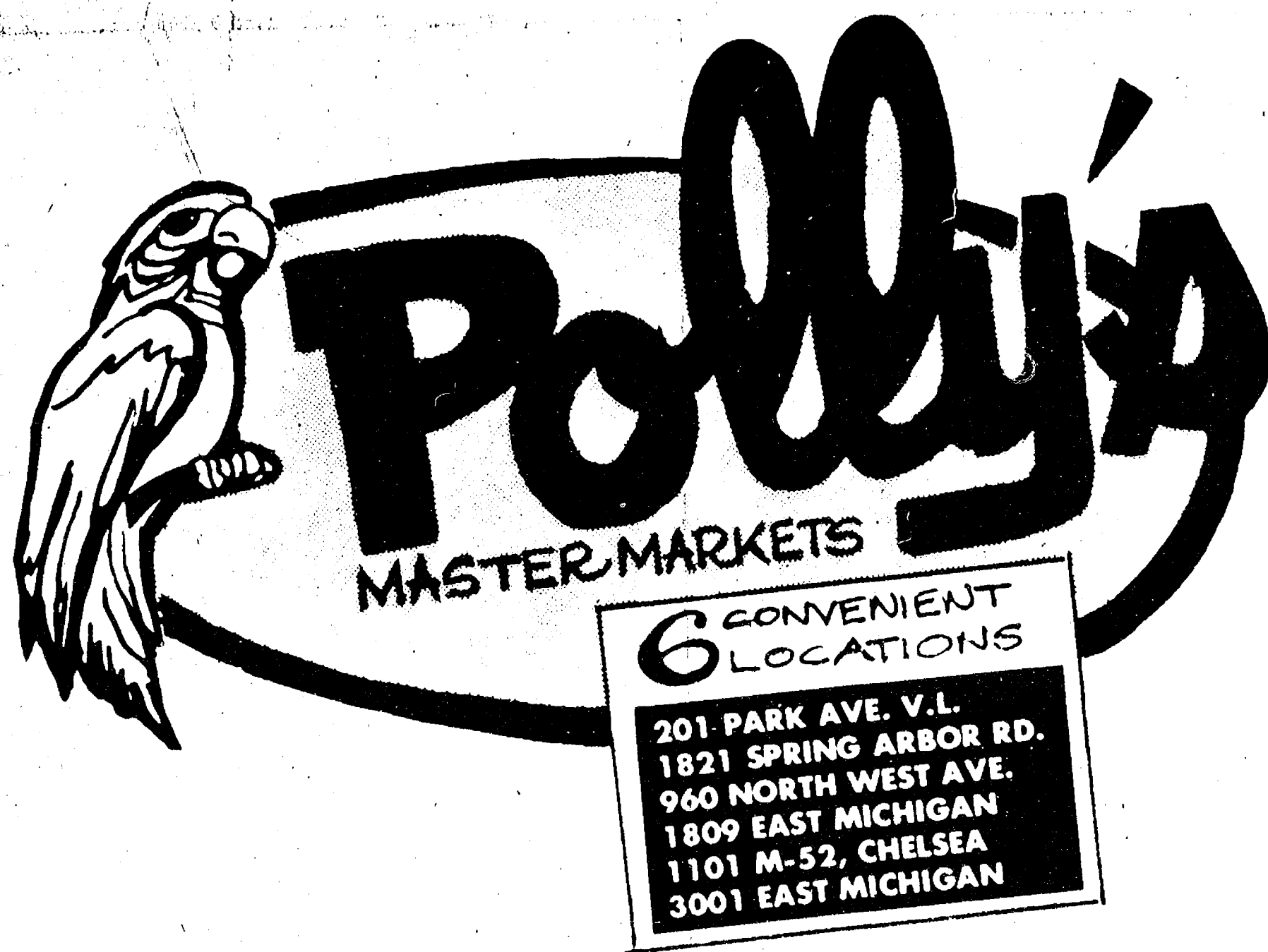


DEL MONTE SLICED or HALVED  
• **PEARS**  
DEL MONTE SLICED or HALVED  
• **Y.C. PEACHES**  
DEL MONTE  
• **FRUIT COCKTAIL**  
DEL MONTE  
• **STEWED TOMATOES**  
**2** 16-OZ. CANS **for 89¢**



# Thank You

FOR SHOPPING AT...



WHERE WE ARE  
HAPPY TO.....

# save YOU MONEY!